



International Office

Everest Biotech Ltd

Vector Laboratories, Inc.
6737 Mowry Ave
Newark, CA 94560
United States

Customer Service:

customerservice@vectorlabs.com

Technical Service:

technical@vectorlabs.com

Tel: +1 (800) 227-6666

www.everestbiotech.com

**Research Use Only. Not for
diagnostic or therapeutic use.**

EB09225 - Goat Anti-MAST3 Antibody

Size: 100µg specific antibody in 200µl



Target Protein

Principal Names: MAST3, microtubule associated serine/threonine kinase 3, KIAA0561

Official Symbol: MAST3

Accession Number(s): NP_055831.1

Human GeneID(s): [23031](#)

Non-Human GeneID(s): 546071 (mouse), 688540 (rat)

Immunogen

Peptide with sequence C-DSFKKQEAVQEVS, from the internal region (near C-terminus) of the protein sequence according to NP_055831.1.

Please note the [peptide](#) is available for sale.

Purification and Storage

Purified from goat serum by ammonium sulphate precipitation followed by antigen affinity chromatography using the immunizing peptide.

Supplied at 0.5 mg/ml in Tris saline, 0.02% sodium azide, pH7.3 with 0.5% bovine serum albumin.

Aliquot and store at -20°C. Minimize freezing and thawing.

Applications Tested

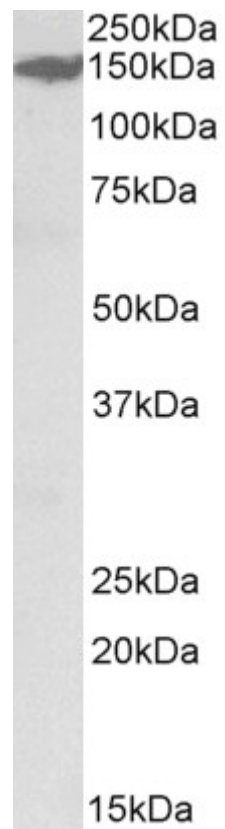
Peptide ELISA: antibody detection limit dilution 1:64000.

Western blot: Approx 150kDa band observed in Rat Kidney lysates (calculated MW of 143kDa according to NP_055831.1). Recommended concentration: 0.3-1 µg/ml.

Species Reactivity

Tested: Rat

Expected from sequence similarity: Human, Mouse, Rat, Dog, Cow



EB09225 (0.3 μ g/ml) staining of Rat Kidney lysate (35 μ g protein in RIPA buffer). Primary incubation was 1 hour.
Detected by chemiluminescence.