



UK Office

Everest Biotech Ltd

Cherwell Innovation Centre
77 Heyford Park
Upper Heyford
Oxfordshire
OX25 5HD
UK

Enquiries:

info@everestbiotech.com

Sales:

sales@everestbiotech.com

Tech support:

support@everestbiotech.com

Tel: +44 (0)1869 238326

Fax: +44 (0)1869 238327

US Office

Everest Biotech c/o Abcore

405 Maple Street, Suite A106
Ramona,
CA 92065
USA

Inquiries:

info@everestbiotech.com

Sales:

usasales@everestbiotech.com

Tech support:

support@everestbiotech.com

Tel: 888-320-4628 (toll-free)

Fax: 888-841-9041

www.everestbiotech.com

**Research Use Only. Not for
diagnostic or therapeutic use.**

EB11612 - Goat Anti-MAT2B (isoform 1) Antibody

Size: 100µg specific antibody in 200µl



Target Protein

Principal Names: beta regulatory subunit of methionine adenosyltransferase, dTDP-4-keto-6-deoxy-D-glucose 4-reductase, MAT II beta, MAT2B, MAT-II, MATIibeta, methionine adenosyltransferase 2 subunit beta, methionine adenosyltransferase II, beta, MGC12237, Nbla02999, OTTHUMP00000160916, OTTHUMP00000160917, OTTHUMP00000224275, OTTHUMP00000224294, putative protein product of Nbla02999, SDR23E1, short chain dehydrogenase/reductase family 23E, member 1, TGR

Official Symbol: MAT2B

Accession Number(s): NP_037415.1

Human GeneID(s): [27430](#)

Non-Human GeneID(s): 108645 (mouse), 683630 (rat)

Important Comments: This antibody is expected to recognize reported isoform 1 (NP_037415.1) only.

Immunogen

Peptide with sequence REKELSIHFVPGS-C, from the N Terminus of the protein sequence according to NP_037415.1.

Please note the [peptide](#) is available for sale.

Purification and Storage

Purified from goat serum by ammonium sulphate precipitation followed by antigen affinity chromatography using the immunizing peptide.

Supplied at 0.5 mg/ml in Tris saline, 0.02% sodium azide, pH7.3 with 0.5% bovine serum albumin.

Aliquot and store at -20°C. Minimize freezing and thawing.

Applications Tested

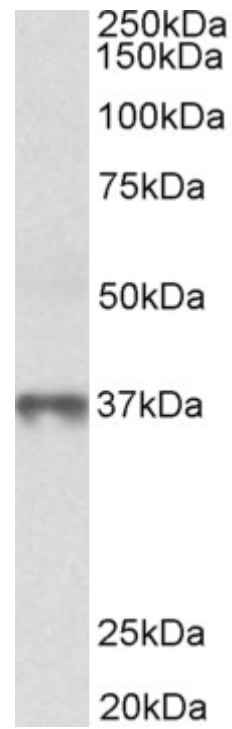
Peptide ELISA: antibody detection limit dilution 1:128000.

Western blot: Approx 37kDa band observed in Human Thymus, Tonsil and Spleen lysates (calculated MW of 37.6kDa according to NP_037415.1). Recommended concentration: 0.3-1µg/ml.

Species Reactivity

Tested: Human

Expected from sequence similarity: Human, Mouse, Rat, Dog, Pig, Cow



EB11612 (0.3 μ g/ml) staining of Human Thymus lysate (35 μ g protein in RIPA buffer). Primary incubation was 1 hour. Detected by chemiluminescence.