



UK Office

Everest Biotech Ltd

Cherwell Innovation Centre
77 Heyford Park
Upper Heyford
Oxfordshire
OX25 5HD
UK

Enquiries:

info@everestbiotech.com

Sales:

sales@everestbiotech.com

Tech support:

support@everestbiotech.com

Tel: +44 (0)1869 238326

Fax: +44 (0)1869 238327

US Office

Everest Biotech c/o Abcore

405 Maple Street, Suite A106
Ramona,
CA 92065
USA

Inquiries:

info@everestbiotech.com

Sales:

usasales@everestbiotech.com

Tech support:

support@everestbiotech.com

Tel: 888-320-4628 (toll-free)

Fax: 888-841-9041

www.everestbiotech.com

**Research Use Only. Not for
diagnostic or therapeutic use.**

EB05058-T - Goat Anti-MAX Antibody - Trial

Size: 20µg specific antibody in 40µl



Target Protein

Principal Names: MAX, MAX protein, MGC10775, MGC11225, MGC18164, MGC34679, MGC36767, myc-associated factor X, helix-loop-helix zipper protein, MYC associated factor X, bHLHd4, bHLHd5, bHLHd6, bHLHd7, bHLHd8, orf1

Official Symbol: MAX

Accession Number(s): NP_002373.3; NP_660087.1

Human GeneID(s): [4149](#)

Non-Human GeneID(s): 17187 (mouse)

Important Comments: This antibody is expected to recognize both reported isoforms (NP_002373.3; NP_660087.1).

Immunogen

Peptide with sequence C-EEPQSRKKLRMEAS, from the C Terminus of the protein sequence according to NP_002373.3; NP_660087.1.

Please note the [peptide](#) is available for sale.

Purification and Storage

Purified from goat serum by ammonium sulphate precipitation followed by antigen affinity chromatography using the immunizing peptide.

Supplied at 0.5 mg/ml in Tris saline, 0.02% sodium azide, pH7.3 with 0.5% bovine serum albumin.

Aliquot and store at -20°C. Minimize freezing and thawing.

Applications Tested

Peptide ELISA: antibody detection limit dilution 1:32000.

Western blot: Approx 22kDa band observed in lysates of cell line Jurkat (calculated MW of 18.3kDa according to NP_002373.3). Recommended concentration: 0.01-0.03µg/ml. Primary incubation 1 hour at room temperature.

IHC: Paraffin embedded Human Prostate. Recommended concentration: 10µg/ml.

Immunofluorescence: Expression of the protein seen in the cytoplasm and nuclei of A431 and U251 cells. Recommended concentration: 10µg/ml.

Additional validation: This antibody has been successfully used in the following paper: Sikorski et al. (2018) PMID: 30377371.

Species Reactivity

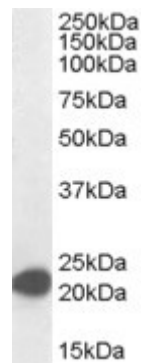
Tested: Human

Expected from sequence similarity: Human, Mouse, Rat, Dog, Cow

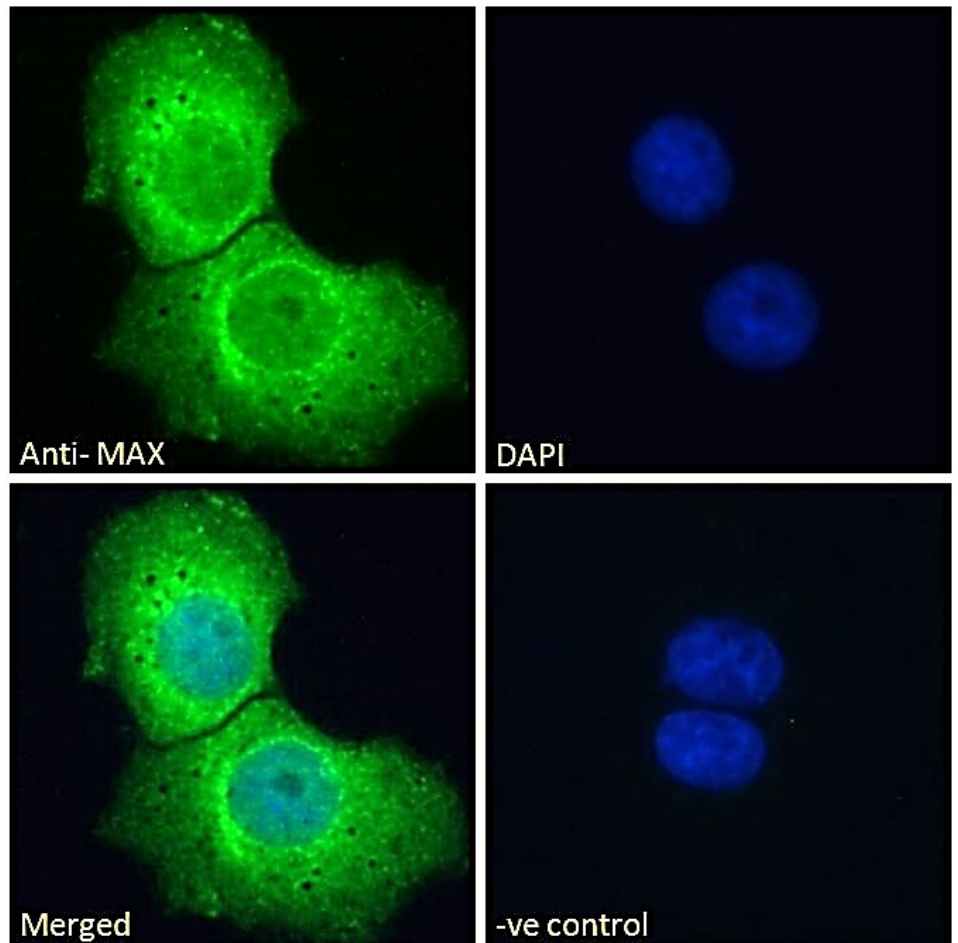
Specific Reference

This antibody has been successfully used in the following paper:

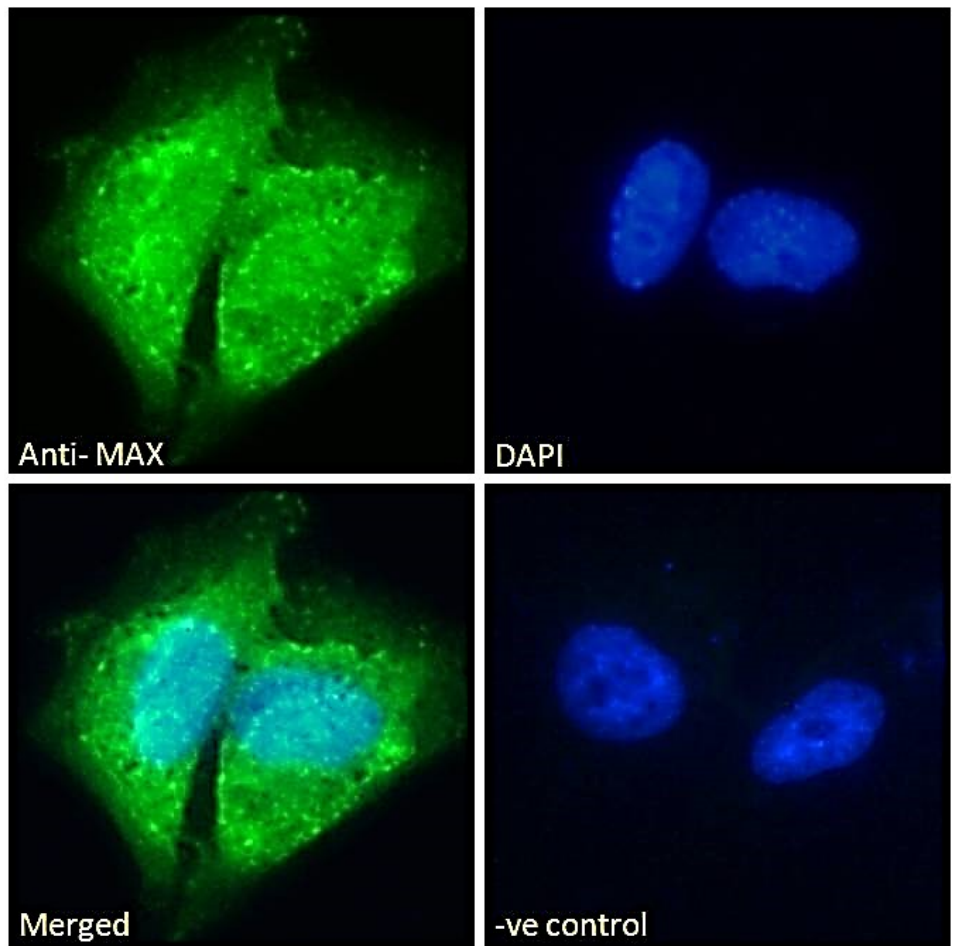
Krzysztof Sikorski, Adi Mehta, Marit Inngjerdigen, Flourina Thakor, Simon Kling, Tomas Kalina, Tuula A. Nyman, Maria Ekman Stensland, Wei Zhou, Gustavo A. De Souza, Lars Holden, Jan Stuchly, Markus Templin and Fridtjof Lund-Johansen
A high-throughput pipeline for validation of antibodies
Nat Methods. 2018 Nov;15(11):909-912
PMID: 30377371



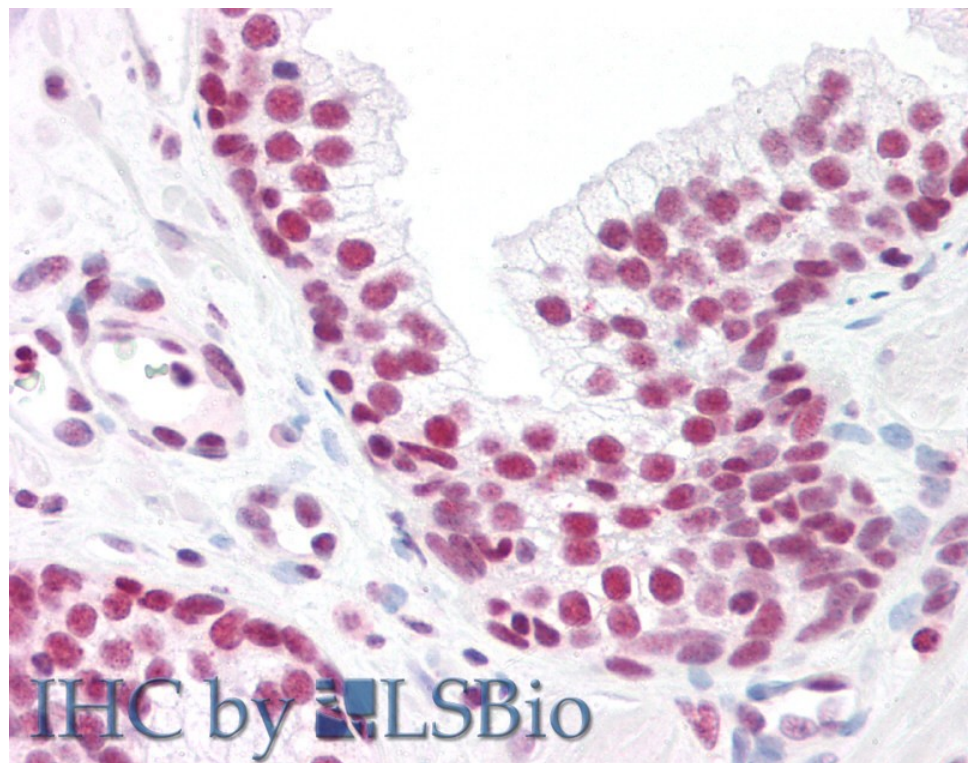
EB05058 (0.01 μ g/ml) staining of Jurkat lysate (35 μ g protein in RIPA buffer). Detected by chemiluminescence.



EB05058 Immunofluorescence analysis of paraformaldehyde fixed A431 cells, permeabilized with 0.15% Triton. Primary incubation 1hr (10 μ g/ml) followed by Alexa Fluor 488 secondary antibody (2 μ g/ml), showing cytoplasmic and nuclear staining. The nuclear stain is DAPI (blue). Negative control: Unimmunized goat IgG (10 μ g/ml) followed by Alexa Fluor 488 secondary antibody (2 μ g/ml).



EB05058 Immunofluorescence analysis of paraformaldehyde fixed U251 cells, permeabilized with 0.15% Triton. Primary incubation 1hr (10ug/ml) followed by Alexa Fluor 488 secondary antibody (2ug/ml), showing cytoplasmic and nuclear staining. The nuclear stain is DAPI (blue). Negative control: Unimmunized goat IgG (10ug/ml) followed by Alexa Fluor 488 secondary antibody (2ug/ml).



EB05058 (10µg/ml) staining of paraffin embedded Human Prostate. Steamed antigen retrieval with citrate buffer pH 6, AP-staining.