

UK Office

Everest Biotech Ltd

Cherwell Innovation Centre
77 Heyford Park
Upper Heyford
Oxfordshire
OX25 5HD
UK

Enquiries:

info@everestbiotech.com

Sales:

sales@everestbiotech.com

Tech support:

support@everestbiotech.com

Tel: +44 (0)1869 238326

www.everestbiotech.com

**Research Use Only. Not for
diagnostic or therapeutic use.**

EB07538 - Goat Anti-MBD2 (isoform 1) Antibody

Size: 100µg specific antibody in 200µl



Target Protein

Principal Names: MBD2, methyl-CpG binding domain protein 2, DKFZp586O0821, DMTase, NY-CO-41

Official Symbol: MBD2

Accession Number(s): NP_003918.1

Human GeneID(s): [8932](#)

Non-Human GeneID(s): 17191 (mouse)

Important Comments: This antibody is expected to recognize isoform 1 (NP_003918.1) only.

Immunogen

Peptide with sequence C-RNDPLNQNKGKPDLN, from the internal region of the protein sequence according to NP_003918.1.

Please note the [peptide](#) is available for sale.

Purification and Storage

Purified from goat serum by ammonium sulphate precipitation followed by antigen affinity chromatography using the immunizing peptide.

Supplied at 0.5 mg/ml in Tris saline, 0.02% sodium azide, pH7.3 with 0.5% bovine serum albumin.

Aliquot and store at -20°C. Minimize freezing and thawing.

Applications Tested

Peptide ELISA: antibody detection limit dilution 1:64000.

Western blot: Approx 48-50kDa band observed in lysates of cell line Jurkat (calculated MW of 43.3kDa according to NP_003918.1). The observed molecular weight corresponds to earlier findings in literature with different antibodies (Tan et al, Mol Cell Biol. 2006 Oct;26(19):7224-35.; PMID: 16980624). Recommended concentration: 0.3-1µg/ml. Primary incubation was 1 hour. This antibody has been successfully used in WB on Human: 33283408 and 20523938.

IHC: Paraffin embedded Human Colon, Adrenal Gland and Skin. Recommended concentration: 2.5µg/ml.

Species Reactivity

Tested: Human

Expected from sequence similarity: Human, Mouse, Rat, Dog

Specific References

This antibody has been successfully used in WB on Human:

Cornelia G. Spruijt et al.

Cross-linking mass spectrometry reveals the structural topology of peripheral NuRD subunits relative to the core complex

FEBS Journal (2021) Volume288, Issue10 May 2021, Pages 3231-3245.

doi:10.1111/febs.15650

PMID: 33283408

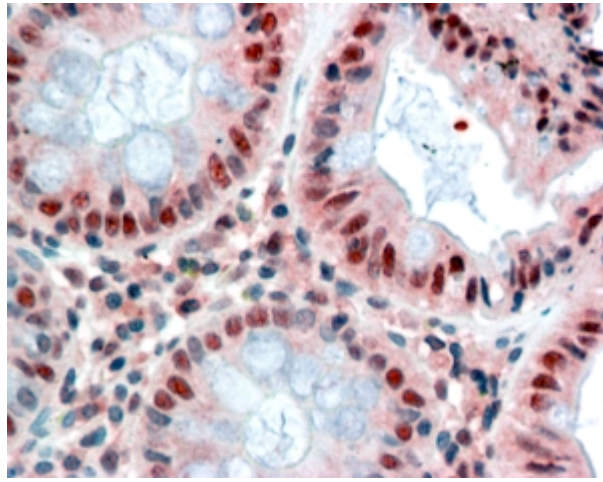
This antibody has been successfully used in WB on Human:

Spruijt CG, Bartels SJ, Brinkman AB, Tjeertes JV, Poser I, Stunnenberg HG, Vermeulen M.

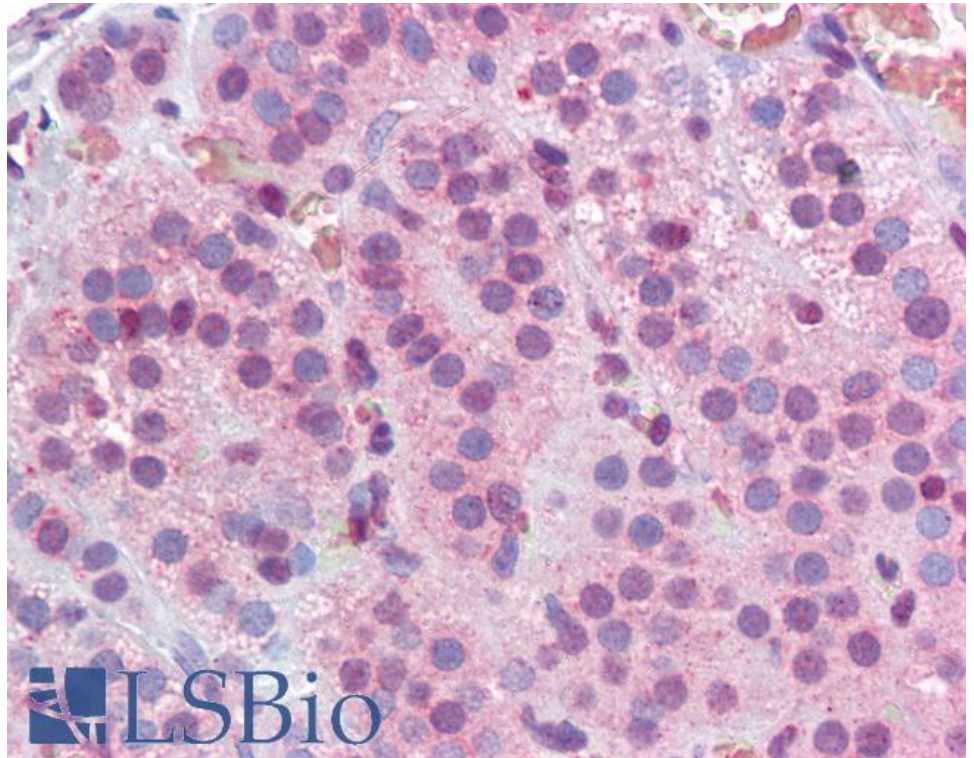
CDK2AP1/DOC-1 is a bona fide subunit of the Mi-2/NuRD complex.
Mol Biosyst. 2010 Sep;6(9):1700-6.
PMID: 20523938



EB07538 (0.3 μ g/ml) staining of Jurkat cell lysate (35 μ g protein in RIPA buffer). Detected by chemiluminescence.

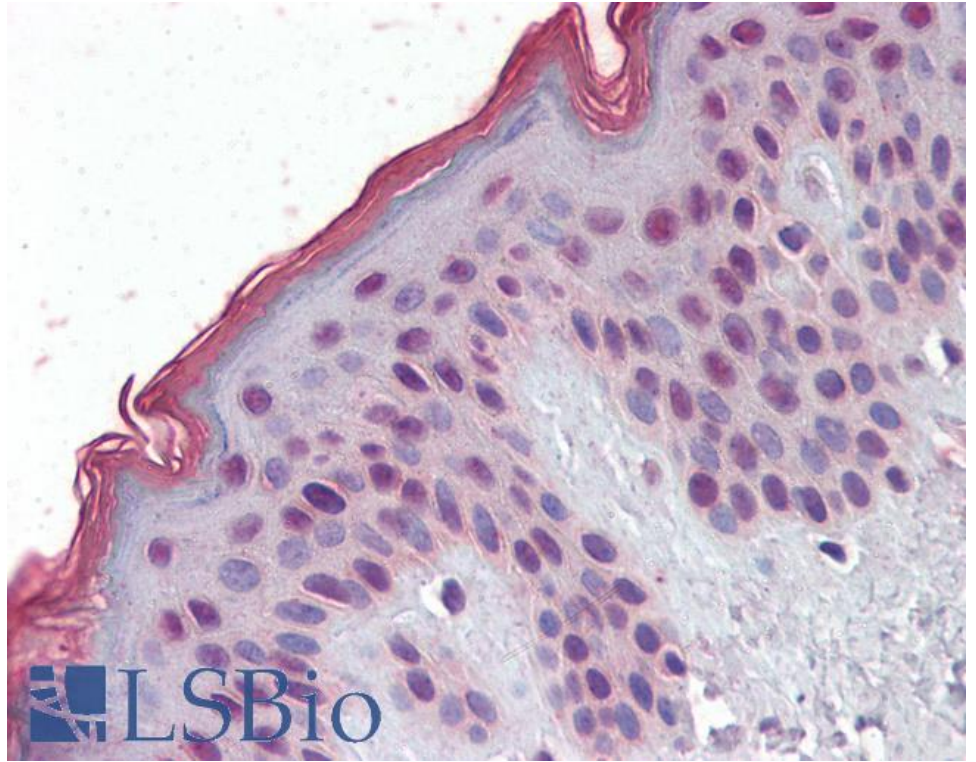


EB07538 (2.5 μ g/ml) staining of paraffin embedded Human Colon. Steamed antigen retrieval with citrate buffer pH 6, AP-staining.



 **LSBio**

EB07538 (2.5µg/ml) staining of paraffin embedded Human Adrenal Gland. Steamed antigen retrieval with citrate buffer pH 6, AP-staining.



EB07538 (2.5µg/ml) staining of paraffin embedded Human Skin. Steamed antigen retrieval with citrate buffer pH 6, AP-staining.