



## UK Office

### Everest Biotech Ltd

Cherwell Innovation Centre  
77 Heyford Park  
Upper Heyford  
Oxfordshire  
OX25 5HD  
UK

Enquiries:

[info@everestbiotech.com](mailto:info@everestbiotech.com)

Sales:

[sales@everestbiotech.com](mailto:sales@everestbiotech.com)

Tech support:

[support@everestbiotech.com](mailto:support@everestbiotech.com)

Tel: +44 (0)1869 238326

[www.everestbiotech.com](http://www.everestbiotech.com)

**Research Use Only. Not for  
diagnostic or therapeutic use.**

## EB06578 - Goat Anti-MBL2 / Mannan-Binding Lectin Antibody

Size: 100µg specific antibody in 200µl



### Target Protein

**Principal Names:** MBL2, mannan-binding lectin, MBL, MBP, MBP1, COLEC1, HSMBPC, mannan-binding lectin (protein C) 2, soluble (opsonic defect), mannan-binding protein, mannanose binding protein, Mannose-binding lectin 2, soluble (opsonic defect)

**Official Symbol:** MBL2

**Accession Number(s):** NP\_000233.1

**Human GeneID(s):** [4153](#)

### Immunogen

Peptide with sequence STSHLAVCEFPI, from the C Terminus of the protein sequence according to NP\_000233.1.

Please note the [peptide](#) is available for sale.

### Purification and Storage

Purified from goat serum by ammonium sulphate precipitation followed by antigen affinity chromatography using the immunizing peptide.

Supplied at 0.5 mg/ml in Tris saline, 0.02% sodium azide, pH7.3 with 0.5% bovine serum albumin.

Aliquot and store at -20°C. Minimize freezing and thawing.

### Applications Tested

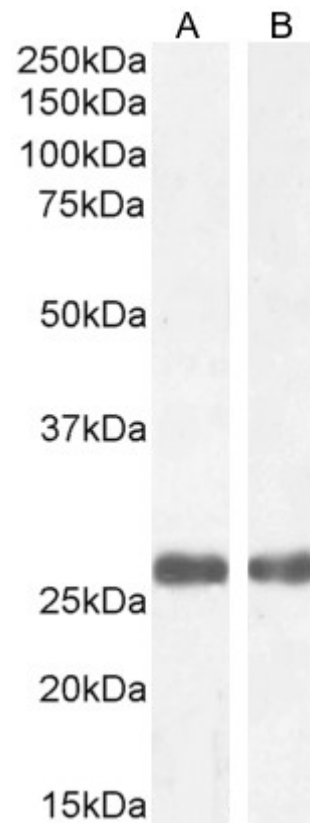
**Peptide ELISA:** antibody detection limit dilution 1:2000.

**Western blot:** Approx 26kDa band observed in Human Heart and Liver lysates (calculated MW of 26.1kDa according to NP\_000233). Recommended concentration: 1-3µg/ml. Primary incubation 1 hour at room temperature.

### Species Reactivity

**Tested:** Human

**Expected from sequence similarity:** Human



EB06578 (1 $\mu$ g/ml) staining of Human Heart (A) and Liver (B) lysate (35 $\mu$ g protein in RIPA buffer). Detected by chemiluminescence.