



UK Office

Everest Biotech Ltd

Cherwell Innovation Centre
77 Heyford Park
Upper Heyford
Oxfordshire
OX25 5HD
UK

Enquiries:

info@everestbiotech.com

Sales:

sales@everestbiotech.com

Tech support:

support@everestbiotech.com

Tel: +44 (0)1869 238326

www.everestbiotech.com

**Research Use Only. Not for
diagnostic or therapeutic use.**

EB09045 - Goat Anti-MBNL1 Antibody

Size: 100µg specific antibody in 200µl



Target Protein

Principal Names: MBNL1, muscleblind-like (Drosophila), DKFZp686P06174, EXP, EXP35, EXP40, EXP42, KIAA0428, MBNL, muscleblind-like 1

Official Symbol: MBNL1

Accession Number(s): NP_066368.2; NP_997175.1; NP_997176.1; NP_997177.1; NP_997178.1; NP_997179.1; NP_997180.1

Human GeneID(s): [4154](#)

Non-Human GeneID(s): 56758 (mouse), 282635 (rat)

Important Comments: This antibody is expected to recognize the reported isoforms (NP_066368.2; NP_997175.1; NP_997176.1; NP_997177.1; NP_997178.1; NP_997179.1)

Immunogen

Peptide with sequence C-SAEHLTSHKYVTQ , from the C Terminus of the protein sequence according to NP_066368.2; NP_997175.1; NP_997176.1; NP_997177.1; NP_997178.1; NP_997179.1; NP_997180.1.

Please note the [peptide](#) is available for sale.

Purification and Storage

Purified from goat serum by ammonium sulphate precipitation followed by antigen affinity chromatography using the immunizing peptide.

Supplied at 0.5 mg/ml in Tris saline, 0.02% sodium azide, pH7.3 with 0.5% bovine serum albumin.

Aliquot and store at -20°C. Minimize freezing and thawing.

Applications Tested

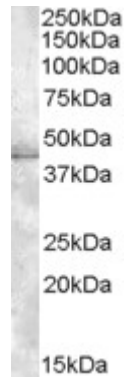
Peptide ELISA: antibody detection limit dilution 1:4000.

Western blot: Approx. 45kDa band observed in lysates of cell line HeLa (calculated MW of 41.8kDa according to NP_997176.1). Recommended concentration: 1-3µg/ml.

Species Reactivity

Tested: Human

Expected from sequence similarity: Human, Mouse, Rat, Dog, Cow



EB09045 (1µg/ml) staining of HeLa lysate (35µg protein in RIPA buffer). Primary incubation was 1 hour.
Detected by chemiluminescence.