

## UK Office

### Everest Biotech Ltd

Cherwell Innovation Centre  
77 Heyford Park  
Upper Heyford  
Oxfordshire  
OX25 5HD  
UK

Enquiries:

[info@everestbiotech.com](mailto:info@everestbiotech.com)

Sales:

[sales@everestbiotech.com](mailto:sales@everestbiotech.com)

Tech support:

[support@everestbiotech.com](mailto:support@everestbiotech.com)

Tel: +44 (0)1869 238326

[www.everestbiotech.com](http://www.everestbiotech.com)

**Research Use Only. Not for  
diagnostic or therapeutic use.**

## EB10807 - Goat Anti-Mboat4 (mouse) Antibody

Size: 100µg specific antibody in 200µl



### Target Protein

**Principal Names:** Mboat4, membrane bound O-acyltransferase domain containing 4, GOAT, Gm171, O-acyltransferase (membrane bound) domain containing 4, O-acyltransferase domain-containing protein 4, ghrelin O-acyltransferase, membrane-bound O-acyltransferase domain-containing

**Official Symbol:** Mboat4

**Accession Number(s):** NP\_001119786.1

**Human GeneID(s):** [619373](#)

**Non-Human GeneID(s):** 234155 (mouse)

### Immunogen

Peptide with sequence CHLGLHYTEYYLGEP, from the internal region of the protein sequence according to NP\_001119786.1.

Please note the [peptide](#) is available for sale.

### Purification and Storage

Purified from goat serum by ammonium sulphate precipitation followed by antigen affinity chromatography using the immunizing peptide.

Supplied at 0.5 mg/ml in Tris saline, 0.02% sodium azide, pH7.3 with 0.5% bovine serum albumin.

Aliquot and store at -20°C. Minimize freezing and thawing.

### Applications Tested

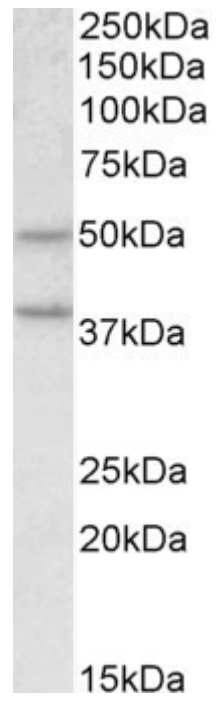
**Peptide ELISA:** antibody detection limit dilution 1:16000.

**Western blot:** Approx 50kDa band observed in Mouse Pancreas lysates (calculated MW of 49.9kDa according to NP\_001119786.1). Recommended concentration: 0.5-2µg/ml. An additional band of unknown identity was also consistently observed at 38kDa. This band was successfully blocked by incubation with the immunizing peptide. Primary incubation was 1 hour.

### Species Reactivity

**Tested:** Mouse

**Expected from sequence similarity:** Human, Mouse, Pig, Cow



EB10807 (0.5µg/ml) staining of Mouse Pancreas lysate (35µg protein in RIPA buffer). Detected by chemiluminescence.