



International Office

Everest Biotech Ltd

Vector Laboratories, Inc.
6737 Mowry Ave
Newark, CA 94560
United States

Customer Service:

customerservice@vectorlabs.com

Technical Service:

technical@vectorlabs.com

Tel: +1 (800) 227-6666

www.everestbiotech.com

**Research Use Only. Not for
diagnostic or therapeutic use.**

EB13081 - Goat Anti-MCAM / CD146/ MUC18 Antibody

Size: 100µg specific antibody in 200µl



Target Protein

Principal Names: MCAM, melanoma cell adhesion molecule, CD146, MUC18;, Gicerin, S-endo 1 endothelial-associated antigen, cell surface glycoprotein MUC18, cell surface glycoprotein P1H12, melanoma adhesion molecule, melanoma-associated antigen A32

Official Symbol: MCAM

Accession Number(s): NP_006491.2

Human GeneID(s): [4162](#)

Immunogen

Peptide with sequence C-EPARKEHSGR, from the internal region of the protein sequence according to NP_006491.2.

Please note the [peptide](#) is available for sale.

Purification and Storage

Purified from goat serum by ammonium sulphate precipitation followed by antigen affinity chromatography using the immunizing peptide.

Supplied at 0.5 mg/ml in Tris saline, 0.02% sodium azide, pH7.3 with 0.5% bovine serum albumin.

Aliquot and store at -20°C. Minimize freezing and thawing.

Applications Tested

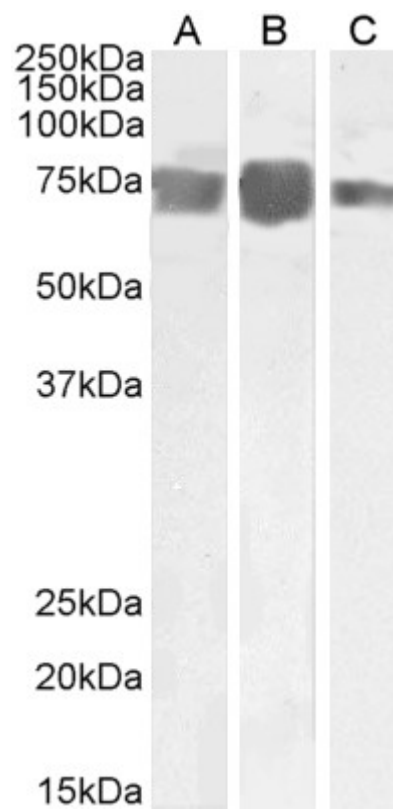
Peptide ELISA: antibody detection limit dilution 1:8000.

Western blot: Approx 70-75kDa band observed in Human Heart, Placenta and Umbilical Cord lysates (calculated MWt of 71.5kDa according to NP_006491.2) Recommended concentration: 0.1-0.3µg/ml.

Species Reactivity

Tested: Human

Expected from sequence similarity: Human



EB13081 (0.3 μ g/ml) staining of Human Heart (A), Placenta (B) and Umbilical Cord (C) lysate (35 μ g protein in RIPA buffer). Primary incubation was 1 hour. Detected by chemiluminescence.