



UK Office

Everest Biotech Ltd

Cherwell Innovation Centre
77 Heyford Park
Upper Heyford
Oxfordshire
OX25 5HD
UK

Enquiries:

info@everestbiotech.com

Sales:

sales@everestbiotech.com

Tech support:

support@everestbiotech.com

Tel: +44 (0)1869 238326

Fax: +44 (0)1869 238327

US Office

Everest Biotech c/o Abcore

405 Maple Street, Suite A106
Ramona,
CA 92065
USA

Inquiries:

info@everestbiotech.com

Sales:

usasales@everestbiotech.com

Tech support:

support@everestbiotech.com

Tel: 888-320-4628 (toll-free)

Fax: 888-841-9041

www.everestbiotech.com

**Research Use Only. Not for
diagnostic or therapeutic use.**

EB05965 - Goat Anti-MDA5 / IFIH1 Antibody

Size: 100µg specific antibody in 200µl



Target Protein

Principal Names: IFIH1, MDA5, MDA-5, Hlcd, MGC133047, IDDM19, melanoma differentiation associated protein-5, DEAD/H (Asp-Glu-Ala-Asp/His) box polypeptide, interferon induced with helicase C domain 1, helicard

Official Symbol: IFIH1

Accession Number(s): NP_071451.2

Human GeneID(s): [64135](#)

Immunogen

Peptide with sequence SNGYSTDENFRYL-C, from the N Terminus of the protein sequence according to NP_071451.2.

Please note the [peptide](#) is available for sale.

Purification and Storage

Purified from goat serum by ammonium sulphate precipitation followed by antigen affinity chromatography using the immunizing peptide.

Supplied at 0.5 mg/ml in Tris saline, 0.02% sodium azide, pH7.3 with 0.5% bovine serum albumin.

Aliquot and store at -20°C. Minimize freezing and thawing.

Applications Tested

Peptide ELISA: antibody detection limit dilution 1:32000.

Western blot: This antibody has been successfully used in Western blot on African Green Monkey: Sato S et al, Arthritis Rheum. 2009 Jul;60(7):2193-200. PMID: 19565506.

IHC: In paraffin embedded Human Pancreas, shows strong cytoplasmic staining of some cells in the islets of Langerhans. Recommended concentration: 10ug/ml.

Flow Cytometry: Flow cytometric analysis of K562 cells. Recommended concentration: 10ug/ml.

Species Reactivity

Tested: Human, Monkey

Expected from sequence similarity: Human

Specific Reference

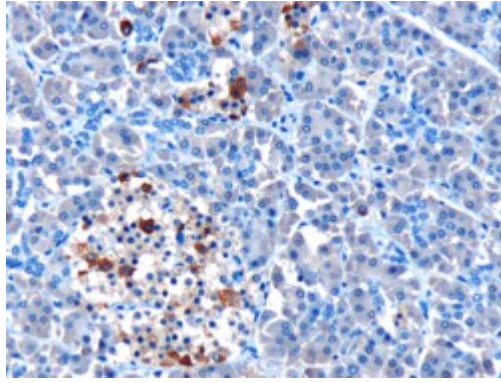
This antibody has been successfully used in Western blot on African Green Monkey:

Sato S, Hoshino K, Satoh T, Fujita T, Kawakami Y, Fujita T, Kuwana M.

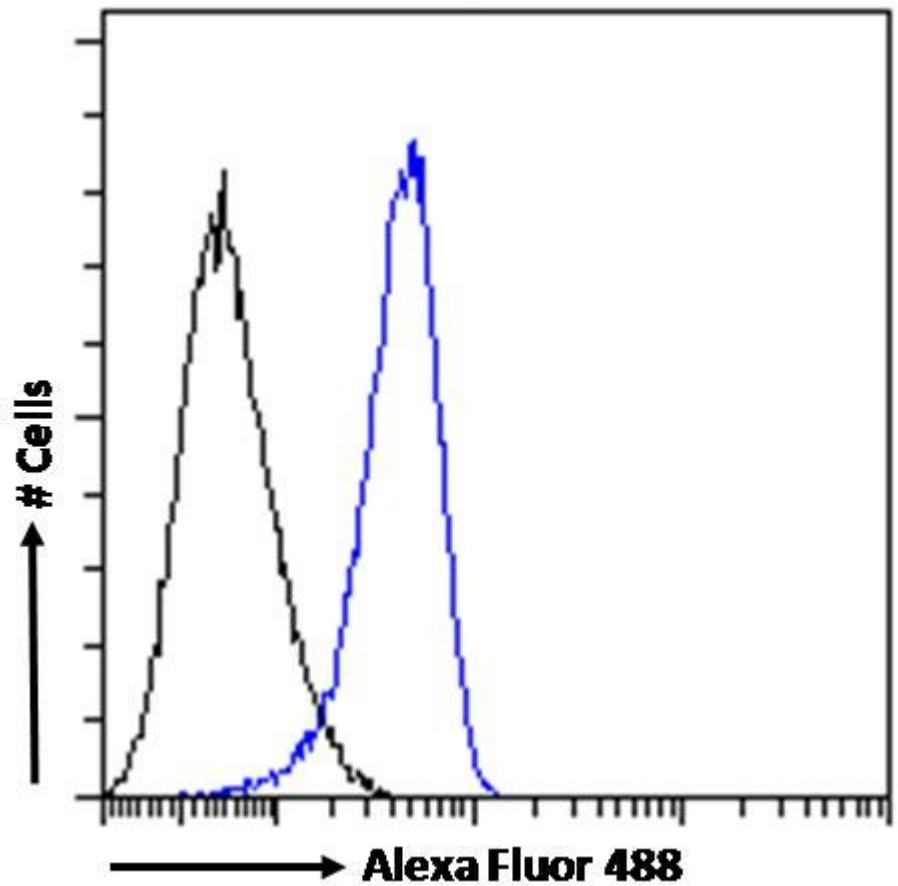
RNA helicase encoded by melanoma differentiation-associated gene 5 is a major autoantigen in patients with clinically amyopathic dermatomyositis: Association with rapidly progressive interstitial lung disease.

Arthritis Rheum. 2009 Jul;60(7):2193-200.

PMID: 19565506



EB05965 (10 μ g/ml) staining of paraffin embedded Human Pancreas. Microwaved antigen retrieval with Tris/EDTA buffer pH9, HRP-staining.



EB05965 Flow cytometric analysis of paraformaldehyde fixed K562 cells (blue line), permeabilized with 0.5% Triton. Primary incubation 1hr (10 μ g/ml) followed by Alexa Fluor 488 secondary antibody (1 μ g/ml). IgG control: Unimmunized goat IgG (black line) followed by Alexa Fluor 488 secondary antibody.