



## International Office

### Everest Biotech Ltd

Vector Laboratories, Inc.  
6737 Mowry Ave  
Newark, CA 94560  
United States

Customer Service:

[customerservice@vectorlabs.com](mailto:customerservice@vectorlabs.com)

Technical Service:

[technical@vectorlabs.com](mailto:technical@vectorlabs.com)

Tel: +1 (800) 227-6666

[www.everestbiotech.com](http://www.everestbiotech.com)

**Research Use Only. Not for  
diagnostic or therapeutic use.**

## EB11995 - Goat Anti-MDH1 / MOR2 (aa211-223) Antibody

Size: 100µg specific antibody in 200µl



### Target Protein

**Principal Names:** MDH1, malate dehydrogenase 1, NAD (soluble), MDH-s, MDHA, MGC:1375, MOR2, cytosolic malate dehydrogenase, malate dehydrogenase, cytoplasmic, soluble malate dehydrogenase

**Official Symbol:** MDH1

**Accession Number(s):** NP\_001186040.1; NP\_005908.1; NP\_001186041.1

**Human GeneID(s):** [4190](#)

**Non-Human GeneID(s):** 17449 (mouse), 24551 (rat)

**Important Comments:** This antibody is expected to recognize all reported isoforms (NP\_001186040.1; NP\_005908.1; NP\_001186041.1).

### Immunogen

Peptide with sequence C-PDVNHAKVKLQGK, from the internal region of the protein sequence according to NP\_001186040.1; NP\_005908.1; NP\_001186041.1.

Please note the [peptide](#) is available for sale.

### Purification and Storage

Purified from goat serum by ammonium sulphate precipitation followed by antigen affinity chromatography using the immunizing peptide.

Supplied at 0.5 mg/ml in Tris saline, 0.02% sodium azide, pH7.3 with 0.5% bovine serum albumin.

Aliquot and store at -20°C. Minimize freezing and thawing.

### Applications Tested

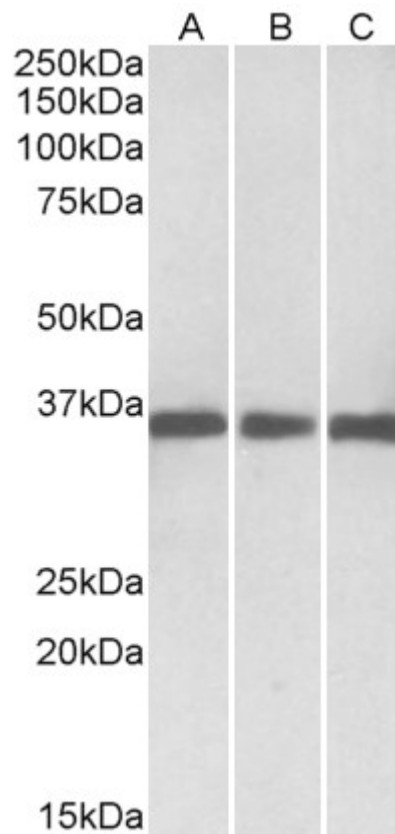
**Peptide ELISA:** antibody detection limit dilution 1:16000.

**Western blot:** Approx 35kDa band observed in Human Mouse, Rat and Pig Heart lysates (calculated MW of 36.4kDa according to NP\_005908.1). Recommended concentration: 0.03-0.1µg/ml.

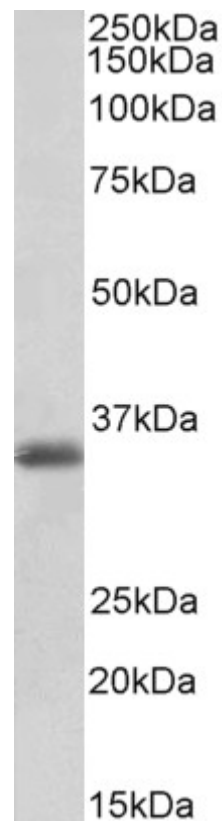
### Species Reactivity

**Tested:** Human, Mouse, Rat, Pig

**Expected from sequence similarity:** Human, Mouse, Rat, Cow



EB11995 (0.03 $\mu$ g/ml) staining of Human (A), Mouse(B) and Rat (C) Heart lysates (35 $\mu$ g protein in RIPA buffer). Primary incubation was 1 hour. Detected by chemiluminescence.



EB11995 (0.1 $\mu$ g/ml) staining of Pig Heart lysates (35 $\mu$ g protein in RIPA buffer). Primary incubation was 1 hour. Detected by chemiluminescence.