

## UK Office

### Everest Biotech Ltd

Cherwell Innovation Centre  
77 Heyford Park  
Upper Heyford  
Oxfordshire  
OX25 5HD  
UK

Enquiries:

[info@everestbiotech.com](mailto:info@everestbiotech.com)

Sales:

[sales@everestbiotech.com](mailto:sales@everestbiotech.com)

Tech support:

[support@everestbiotech.com](mailto:support@everestbiotech.com)

Tel: +44 (0)1869 238326

[www.everestbiotech.com](http://www.everestbiotech.com)

**Research Use Only. Not for  
diagnostic or therapeutic use.**

## EB13027 - Goat Anti-MDH2 Antibody

Size: 100µg specific antibody in 200µl



### Target Protein

**Principal Names:** MDH2, malate dehydrogenase 2, NAD (mitochondrial), M-MDH, MDH, MGC:3559, MOR1, malate dehydrogenase, mitochondrial

**Official Symbol:** MDH2

**Accession Number(s):** NP\_005909.2

**Human GeneID(s):** [4191](#)

**Non-Human GeneID(s):** 17448 (mouse), 81829 (rat)

### Immunogen

Peptide with sequence C-TRDDLNTNAT, from the internal region of the protein sequence according to NP\_005909.2.

Please note the [peptide](#) is available for sale.

### Purification and Storage

Purified from goat serum by ammonium sulphate precipitation followed by antigen affinity chromatography using the immunizing peptide.

Supplied at 0.5 mg/ml in Tris saline, 0.02% sodium azide, pH7.3 with 0.5% bovine serum albumin.

Aliquot and store at -20°C. Minimize freezing and thawing.

### Applications Tested

**Peptide ELISA:** antibody detection limit dilution 1:8000.

**Western blot:** Approx 35kDa band observed in lysates of cell lines HeLa, HepG2 and NIH3T3 (calculated MW of 35.5kDa according to Human NP\_005909.2 and 35.6kDa according to Mouse NP\_032643.2 ). Recommended concentration: 0.1-0.3µg/ml. Primary incubation was 1 hour. Approx 35kDa band observed in Human, Mouse, Rat and Pig Heart lysates (calculated MW of 35.5kDa according to Human NP\_005909.2 and 35.6kDa according to Mouse NP\_032643.2, Rat NP\_112413.2 and Pig NP\_001231082.1 ). Recommended concentration: 0.01-0.03µg/ml. Primary incubation was 1 hour. This antibody has been successfully used in WB on Human, PMID: 38609156.

**IHC:** Paraffin embedded Human Skeletal Muscle. Recommended concentration: 5µg/ml.

### Species Reactivity

**Tested:** Human, Mouse, Rat, Pig

**Expected from sequence similarity:** Human, Mouse, Rat, Pig, Cow

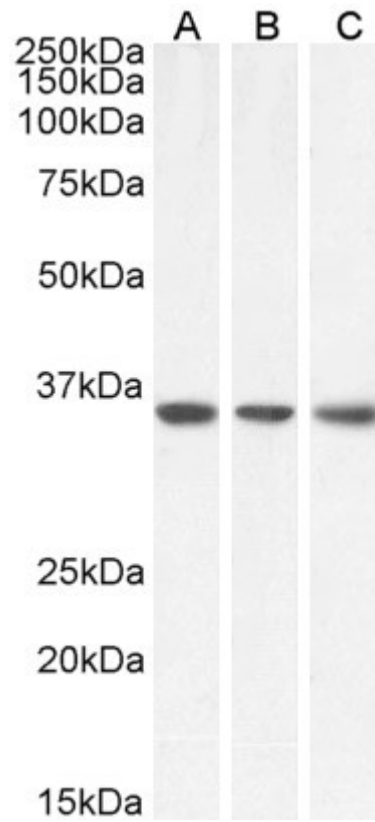
### Specific Reference

**This antibody has been successfully used in WB on Human:**

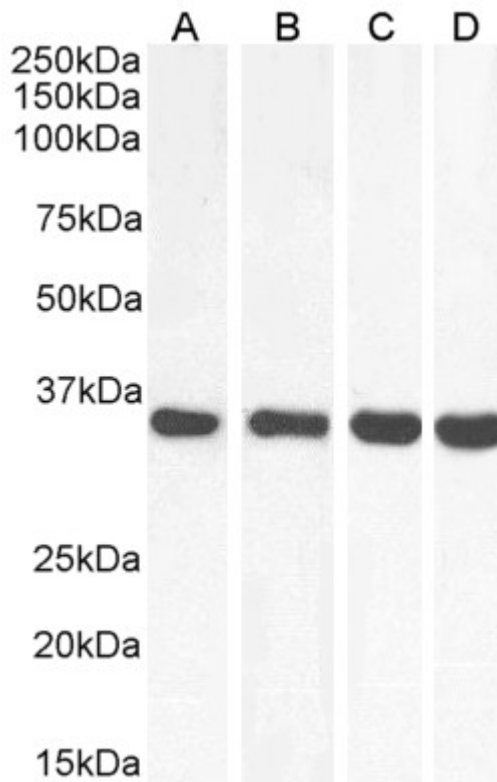
Michelle Noble, Aindrila Chatterjee, Thileepan Sekaran, Thomas Schwarzl, Matthias W Hentze

Cytosolic RNA binding of the mitochondrial TCA cycle enzyme malate dehydrogenase. RNA. 2024 Jun 17;30(7):839-853.

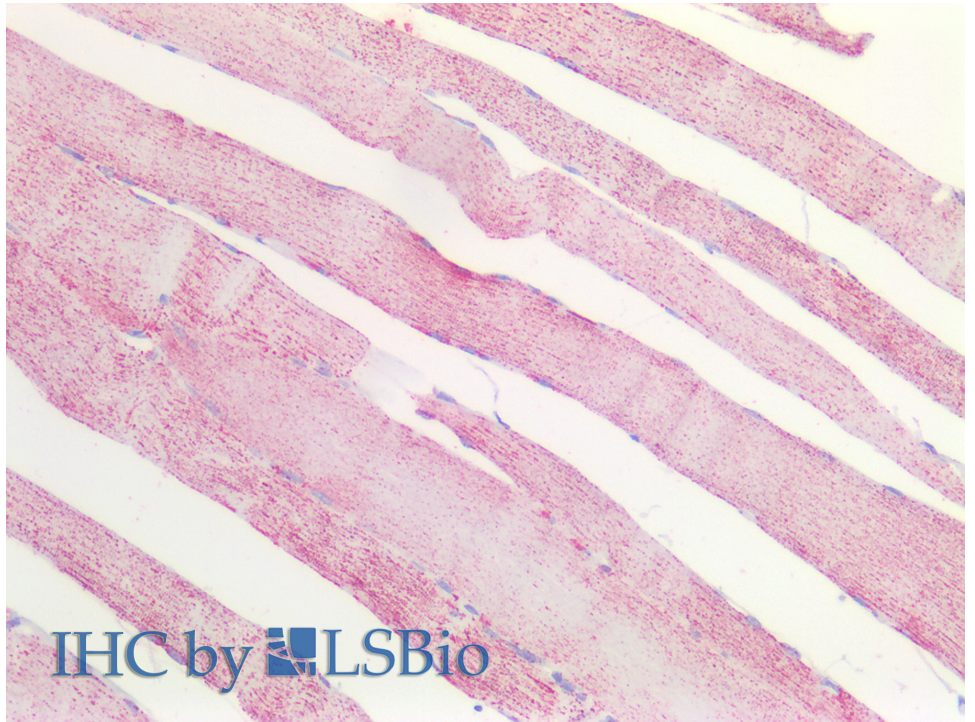
PMID: 38609156



EB13027 (0.1 $\mu$ g/ml) staining of HeLa (A), HepG2 (B) and NIH3T3 (C) lysate (35 $\mu$ g protein in RIPA buffer). Detected by chemiluminescence.



EB13027 (0.01 $\mu$ g/ml) staining of Human (A), Mouse (B), Rat (C) and Pig (D) Heart lysate (35 $\mu$ g protein in RIPA buffer). Detected by chemiluminescence.



EB13027 (5 $\mu$ g/ml) staining of paraffin embedded Human Skeletal Muscle. Steamed antigen retrieval with citrate buffer pH 6, AP-staining.