



## UK Office

### Everest Biotech Ltd

Cherwell Innovation Centre  
77 Heyford Park  
Upper Heyford  
Oxfordshire  
OX25 5HD  
UK

Enquiries:

[info@everestbiotech.com](mailto:info@everestbiotech.com)

Sales:

[sales@everestbiotech.com](mailto:sales@everestbiotech.com)

Tech support:

[support@everestbiotech.com](mailto:support@everestbiotech.com)

Tel: +44 (0)1869 238326

Fax: +44 (0)1869 238327

## US Office

### Everest Biotech c/o Abcore

405 Maple Street, Suite A106  
Ramona,  
CA 92065  
USA

Inquiries:

[info@everestbiotech.com](mailto:info@everestbiotech.com)

Sales:

[usasales@everestbiotech.com](mailto:usasales@everestbiotech.com)

Tech support:

[support@everestbiotech.com](mailto:support@everestbiotech.com)

Tel: 888-320-4628 (toll-free)

Fax: 888-841-9041

[www.everestbiotech.com](http://www.everestbiotech.com)

**Research Use Only. Not for  
diagnostic or therapeutic use.**

## EB06990 - Goat Anti-MDM2 (isoform) Antibody

Size: 100µg specific antibody in 200µl



### Target Protein

**Principal Names:** MDM2, Mdm2, transformed 3T3 cell double minute 2, p53 binding protein (mouse), HGNC:6973, MGC71221, hdm2, mouse double minute 2 homolog, mouse double minute 2, human homolog of, p53-binding protein, p53-binding protein MDM2, ubiquitin-protein ligase E3 Mdm2, Mdm2 p53 binding protein homolog (mouse), HDMX, MGC5370, Mdm2, transformed 3T3 cell double minute 2, p53 binding protein, OTTHUMP00000183495, double minute 2, human homolog of

**Official Symbol:** MDM2

**Accession Number(s):** NP\_002383.2

**Human GeneID(s):** [4193](#)

**Important Comments:** This antibody is expected to recognize isoform MDM2 (NP\_002383.2) only.

### Immunogen

Peptide with sequence C-DELSGERQKRHKSD, from the internal region of the protein sequence according to NP\_002383.2.

Please note the [peptide](#) is available for sale.

### Purification and Storage

Purified from goat serum by ammonium sulphate precipitation followed by antigen affinity chromatography using the immunizing peptide.

Supplied at 0.5 mg/ml in Tris saline, 0.02% sodium azide, pH7.3 with 0.5% bovine serum albumin.

Aliquot and store at -20°C. Minimize freezing and thawing.

### Applications Tested

**Peptide ELISA:** antibody detection limit dilution 1:64000.

**Western blot:** Approx 55kDa band observed in Human Liver lysates (calculated MW of 56.0kDa according to NP\_002383.2). In transfected HEK293 transiently expressing MDM2 bands of approx. 48kDa, 60kDa, 70kDa and 90kDa are observed. These bands are not observed in the non-transfected HEK293. The 80kDa band is endogenously expressed in the negative control. Recommended concentration: 0.3-1.0µg/ml.

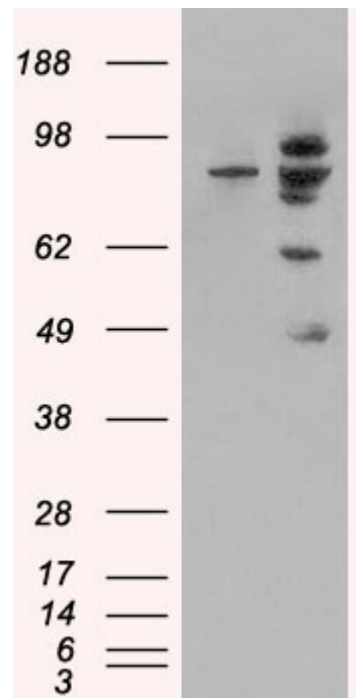
### Species Reactivity

**Tested:** Human

**Expected from sequence similarity:** Human, Rat, Cat, Dog, Pig, Cow



EB06990 (0.3µg/ml) staining of Human Liver lysate (35µg protein in RIPA buffer). Primary incubation was 1 hour.  
Detected by chemiluminescence.



HEK293 overexpressing MDM2 (RC219518) and probed with EB06990 (mock transfection in first lane), tested  
by Origene.