



## International Office

### Everest Biotech Ltd

Vector Laboratories, Inc.  
6737 Mowry Ave  
Newark, CA 94560  
United States

Customer Service:

[customerservice@vectorlabs.com](mailto:customerservice@vectorlabs.com)

Technical Service:

[technical@vectorlabs.com](mailto:technical@vectorlabs.com)

Tel: +1 (800) 227-6666

[www.everestbiotech.com](http://www.everestbiotech.com)

**Research Use Only. Not for  
diagnostic or therapeutic use.**

## EB08703 - Goat Anti-MDR2 / MDR3 Antibody

Size: 100µg specific antibody in 200µl



### Target Protein

**Principal Names:** ABCB4, ATP-binding cassette, sub-family B (MDR/TAP), member 4, ABC21, GBD1, MDR2, MDR2/3, MDR3, PFIC-3, PGY3, ATP-binding cassette, subfamily B, member 4, P glycoprotein 3/multiple drug resistance 3, P-glycoprotein-3/multiple drug resistance-3, multidrug resistance protein 3, multiple drug resistance 3

**Official Symbol:** ABCB4

**Accession Number(s):** NP\_000434.1; NP\_061337.1; NP\_061338.1

**Human GeneID(s):** [5244](#)

**Important Comments:** This antibody is expected to recognize all three reported isoforms (NP\_000434.1; NP\_061337.1; NP\_061338.1).

### Immunogen

Peptide with sequence DLEAAKNGTAWRP-C, from the N Terminus of the protein sequence according to NP\_000434.1; NP\_061337.1; NP\_061338.1.

Please note the [peptide](#) is available for sale.

### Purification and Storage

Purified from goat serum by ammonium sulphate precipitation followed by antigen affinity chromatography using the immunizing peptide.

Supplied at 0.5 mg/ml in Tris saline, 0.02% sodium azide, pH7.3 with 0.5% bovine serum albumin.

Aliquot and store at -20°C. Minimize freezing and thawing.

### Applications Tested

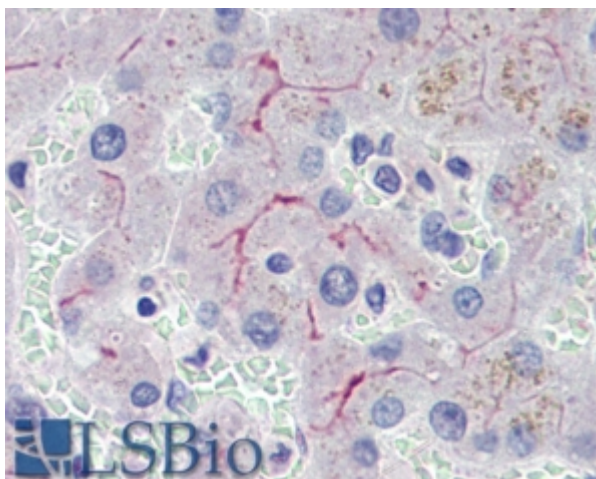
**Peptide ELISA:** antibody detection limit dilution 1:32000.

**IHC:** In paraffin embedded Human Liver shows membranous staining between hepatocytes. Recommended concentration, 1-2µg/ml.

### Species Reactivity

**Tested:** Human

**Expected from sequence similarity:** Human



EB08703 (3.8µg/ml) staining of paraffin embedded Human Liver. Steamed antigen retrieval with citrate buffer pH 6, AP-staining.