



## UK Office

### Everest Biotech Ltd

Cherwell Innovation Centre  
77 Heyford Park  
Upper Heyford  
Oxfordshire  
OX25 5HD  
UK

Enquiries:

[info@everestbiotech.com](mailto:info@everestbiotech.com)

Sales:

[sales@everestbiotech.com](mailto:sales@everestbiotech.com)

Tech support:

[support@everestbiotech.com](mailto:support@everestbiotech.com)

Tel: +44 (0)1869 238326

Fax: +44 (0)1869 238327

## US Office

### Everest Biotech c/o Abcore

405 Maple Street, Suite A106  
Ramona,  
CA 92065  
USA

Inquiries:

[info@everestbiotech.com](mailto:info@everestbiotech.com)

Sales:

[usasales@everestbiotech.com](mailto:usasales@everestbiotech.com)

Tech support:

[support@everestbiotech.com](mailto:support@everestbiotech.com)

Tel: 888-320-4628 (toll-free)

Fax: 888-841-9041

[www.everestbiotech.com](http://www.everestbiotech.com)

**Research Use Only. Not for  
diagnostic or therapeutic use.**

## EB05041-T - Goat Anti-MELK Antibody - Trial

Size: 20µg specific antibody in 40µl



### Target Protein

**Principal Names:** MELK, maternal embryonic leucine zipper kinase, KIAA0175, RP11-8N6.1, HPK38, OTTHUMP00000046113, pEg3 kinase

**Official Symbol:** MELK

**Accession Number(s):** NP\_055606.1

**Human GeneID(s):** [9833](#)

### Immunogen

Peptide with sequence KRLVEDILSSCKV, from the C Terminus of the protein sequence according to NP\_055606.1.

Please note the [peptide](#) is available for sale.

### Purification and Storage

Purified from goat serum by ammonium sulphate precipitation followed by antigen affinity chromatography using the immunizing peptide.

Supplied at 0.5 mg/ml in Tris saline, 0.02% sodium azide, pH7.3 with 0.5% bovine serum albumin.

Aliquot and store at -20°C. Minimize freezing and thawing.

### Applications Tested

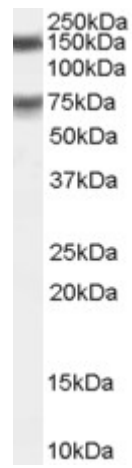
**Peptide ELISA:** antibody detection limit dilution 1:32000.

**Western blot:** Experiments gave bands at approx 75kDa and 150kDa in Human Testis lysates and in cell lines HeLa and Jurkat after 0.1µg/ml antibody staining. The 150kDa band is explained by glycosylation of this member of the AMPK family. This protein has a calculated MW of 74.6kDa according to NP\_055606.1. Recommended concentration: 0.1-0.3µg/ml. Preliminary testing was unsuccessful on Mouse Testis for this particular batch.

### Species Reactivity

**Tested:** Human

**Expected from sequence similarity:** Human, Mouse, Dog, Cow



EB05041 (0.1µg/ml) staining of Human Testis lysate (RIPA buffer, 1.4E5 cells per lane). Detected by chemiluminescence.