



International Office

Everest Biotech Ltd

Vector Laboratories, Inc.
6737 Mowry Ave
Newark, CA 94560
United States

Customer Service:

customerservice@vectorlabs.com

Technical Service:

technical@vectorlabs.com

Tel: +1 (800) 227-6666

www.everestbiotech.com

**Research Use Only. Not for
diagnostic or therapeutic use.**

EB05041 - Goat Anti-MELK Antibody

Size: 100µg specific antibody in 200µl



Target Protein

Principal Names: MELK, maternal embryonic leucine zipper kinase, KIAA0175, RP11-8N6.1, HPK38, OTTHUMP00000046113, pEg3 kinase

Official Symbol: MELK

Accession Number(s): NP_055606.1

Human GeneID(s): [9833](#)

Immunogen

Peptide with sequence KRLVEDILSSCKV, from the C Terminus of the protein sequence according to NP_055606.1.

Please note the [peptide](#) is available for sale.

Purification and Storage

Purified from goat serum by ammonium sulphate precipitation followed by antigen affinity chromatography using the immunizing peptide.

Supplied at 0.5 mg/ml in Tris saline, 0.02% sodium azide, pH7.3 with 0.5% bovine serum albumin.

Aliquot and store at -20°C. Minimize freezing and thawing.

Applications Tested

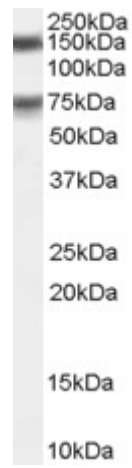
Peptide ELISA: antibody detection limit dilution 1:32000.

Western blot: Experiments gave bands at approx 75kDa and 150kDa in Human Testis lysates and in cell lines HeLa and Jurkat after 0.1µg/ml antibody staining. The 150kDa band is explained by glycosylation of this member of the AMPK family. This protein has a calculated MW of 74.6kDa according to NP_055606.1. Recommended concentration: 0.1-0.3µg/ml. Preliminary testing was unsuccessful on Mouse Testis for this particular batch.

Species Reactivity

Tested: Human

Expected from sequence similarity: Human, Mouse, Dog, Cow



EB05041 (0.1µg/ml) staining of Human Testis lysate (RIPA buffer, 1.4E5 cells per lane). Detected by chemiluminescence.