



UK Office

Everest Biotech Ltd

Cherwell Innovation Centre
77 Heyford Park
Upper Heyford
Oxfordshire
OX25 5HD
UK

Enquiries:

info@everestbiotech.com

Sales:

sales@everestbiotech.com

Tech support:

support@everestbiotech.com

Tel: +44 (0)1869 238326

Fax: +44 (0)1869 238327

US Office

Everest Biotech c/o Abcore

405 Maple Street, Suite A106
Ramona,
CA 92065
USA

Inquiries:

info@everestbiotech.com

Sales:

usasales@everestbiotech.com

Tech support:

support@everestbiotech.com

Tel: 888-320-4628 (toll-free)

Fax: 888-841-9041

www.everestbiotech.com

**Research Use Only. Not for
diagnostic or therapeutic use.**

EB05041 - Goat Anti-MELK Antibody

Size: 100µg specific antibody in 200µl



Target Protein

Principal Names: MELK, maternal embryonic leucine zipper kinase, KIAA0175, RP11-8N6.1, HPK38, OTTHUMP00000046113, pEg3 kinase

Official Symbol: MELK

Accession Number(s): NP_055606.1

Human GeneID(s): [9833](#)

Immunogen

Peptide with sequence KRLVEDILSSCKV, from the C Terminus of the protein sequence according to NP_055606.1.

Please note the [peptide](#) is available for sale.

Purification and Storage

Purified from goat serum by ammonium sulphate precipitation followed by antigen affinity chromatography using the immunizing peptide.

Supplied at 0.5 mg/ml in Tris saline, 0.02% sodium azide, pH7.3 with 0.5% bovine serum albumin.

Aliquot and store at -20°C. Minimize freezing and thawing.

Applications Tested

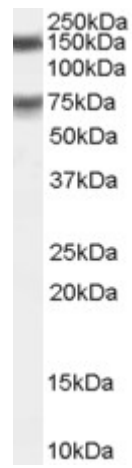
Peptide ELISA: antibody detection limit dilution 1:32000.

Western blot: Experiments gave bands at approx 75kDa and 150kDa in Human Testis lysates and in cell lines HeLa and Jurkat after 0.1µg/ml antibody staining. The 150kDa band is explained by glycosylation of this member of the AMPK family. This protein has a calculated MW of 74.6kDa according to NP_055606.1. Recommended concentration: 0.1-0.3µg/ml. Preliminary testing was unsuccessful on Mouse Testis for this particular batch.

Species Reactivity

Tested: Human

Expected from sequence similarity: Human, Mouse, Dog, Cow



EB05041 (0.1µg/ml) staining of Human Testis lysate (RIPA buffer, 1.4E5 cells per lane). Detected by chemiluminescence.