



## UK Office

### Everest Biotech Ltd

Cherwell Innovation Centre  
77 Heyford Park  
Upper Heyford  
Oxfordshire  
OX25 5HD  
UK

Enquiries:

[info@everestbiotech.com](mailto:info@everestbiotech.com)

Sales:

[sales@everestbiotech.com](mailto:sales@everestbiotech.com)

Tech support:

[support@everestbiotech.com](mailto:support@everestbiotech.com)

Tel: +44 (0)1869 238326

[www.everestbiotech.com](http://www.everestbiotech.com)

**Research Use Only. Not for  
diagnostic or therapeutic use.**

## EB08073 - Goat Anti-MEPCE Antibody

Size: 100µg specific antibody in 200µl



### Target Protein

**Principal Names:** MEPCE, methylphosphate capping enzyme, BCDIN3, FLJ20257, bin3, bicoid-interacting 3, bin3, bicoid-interacting 3, homolog

**Official Symbol:** MEPCE

**Accession Number(s):** NP\_062552.2

**Human GeneID(s):** [56257](#)

### Immunogen

Peptide with sequence KQQRKFQYGN YCK, from the internal region of the protein sequence according to NP\_062552.2.

Please note the [peptide](#) is available for sale.

### Purification and Storage

Purified from goat serum by ammonium sulphate precipitation followed by antigen affinity chromatography using the immunizing peptide.

Supplied at 0.5 mg/ml in Tris saline, 0.02% sodium azide, pH7.3 with 0.5% bovine serum albumin.

Aliquot and store at -20°C. Minimize freezing and thawing.

### Applications Tested

**Peptide ELISA:** antibody detection limit dilution 1:2000.

**Western blot:** Approx. 75kDa band observed in Rat Testis lysates (calculated MW of 74.4kDa according to Human NP\_062552.2 and 75.3kDa according to Rat XP\_222048.4).

Recommended concentration: 1-3µg/ml. Primary incubation was 1 hour. Preliminary testing was unsuccessful on Human for this particular batch.

**IHC:** In paraffin embedded Human Testis shows staining of the spermatids.

Recommended concentration: 5-10µg/ml.

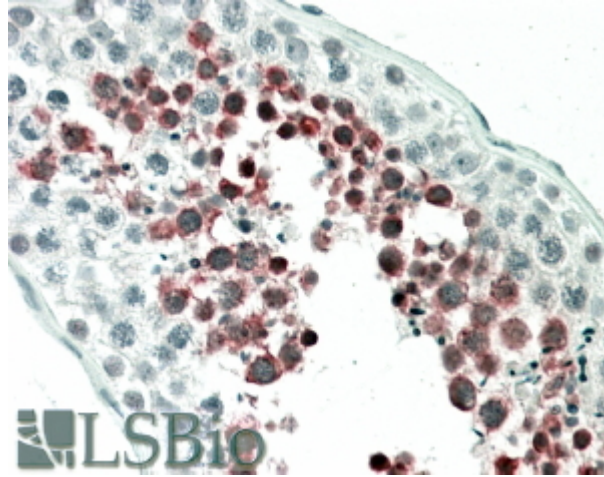
### Species Reactivity

**Tested:** Human, Rat

**Expected from sequence similarity:** Human, Mouse, Rat



EB08073 (1 $\mu$ g/ml) staining of Rat Testis lysate (35 $\mu$ g protein in RIPA buffer). Detected by chemiluminescence.



EB08073 (5 $\mu$ g/ml) staining of paraffin embedded Human Testis. Steamed antigen retrieval with citrate buffer pH 6, AP-staining.