



UK Office

Everest Biotech Ltd

Cherwell Innovation Centre
77 Heyford Park
Upper Heyford
Oxfordshire
OX25 5HD
UK

Enquiries:

info@everestbiotech.com

Sales:

sales@everestbiotech.com

Tech support:

support@everestbiotech.com

Tel: +44 (0)1869 238326

Fax: +44 (0)1869 238327

US Office

Everest Biotech c/o Abcore

405 Maple Street, Suite A106
Ramona,
CA 92065
USA

Inquiries:

info@everestbiotech.com

Sales:

usasales@everestbiotech.com

Tech support:

support@everestbiotech.com

Tel: 888-320-4628 (toll-free)

Fax: 888-841-9041

www.everestbiotech.com

**Research Use Only. Not for
diagnostic or therapeutic use.**

EB08073 - Goat Anti-MEPCE Antibody

Size: 100µg specific antibody in 200µl



Target Protein

Principal Names: MEPCE, methylphosphate capping enzyme, BCDIN3, FLJ20257, bin3, bicoid-interacting 3, bin3, bicoid-interacting 3, homolog

Official Symbol: MEPCE

Accession Number(s): NP_062552.2

Human GeneID(s): [56257](#)

Immunogen

Peptide with sequence KQQRKFQYGNKYCK, from the internal region of the protein sequence according to NP_062552.2.

Please note the [peptide](#) is available for sale.

Purification and Storage

Purified from goat serum by ammonium sulphate precipitation followed by antigen affinity chromatography using the immunizing peptide.

Supplied at 0.5 mg/ml in Tris saline, 0.02% sodium azide, pH7.3 with 0.5% bovine serum albumin.

Aliquot and store at -20°C. Minimize freezing and thawing.

Applications Tested

Peptide ELISA: antibody detection limit dilution 1:2000.

Western blot: Approx. 75kDa band observed in Rat Testis lysates (calculated MW of 74.4kDa according to Human NP_062552.2 and 75.3kDa according to Rat XP_222048.4).

Recommended concentration: 1-3µg/ml. Primary incubation was 1 hour. Preliminary testing was unsuccessful on Human for this particular batch.

IHC: In paraffin embedded Human Testis shows staining of the spermatids.

Recommended concentration: 5-10µg/ml.

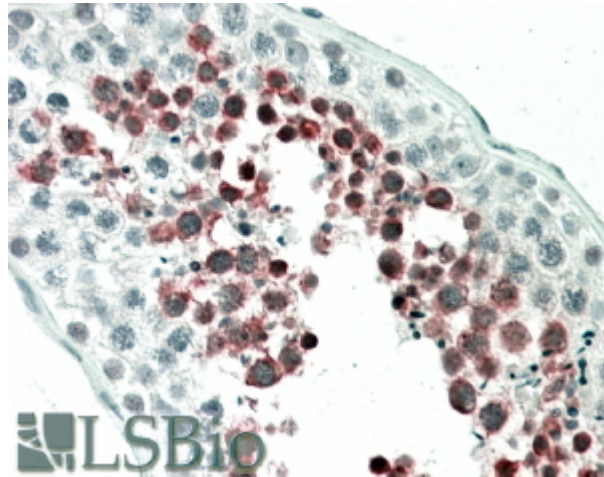
Species Reactivity

Tested: Human, Rat

Expected from sequence similarity: Human, Mouse, Rat



EB08073 (1µg/ml) staining of Rat Testis lysate (35µg protein in RIPA buffer). Detected by chemiluminescence.



EB08073 (5µg/ml) staining of paraffin embedded Human Testis. Steamed antigen retrieval with citrate buffer pH 6, AP-staining.