

## UK Office

### Everest Biotech Ltd

Cherwell Innovation Centre  
77 Heyford Park  
Upper Heyford  
Oxfordshire  
OX25 5HD  
UK

Enquiries:

[info@everestbiotech.com](mailto:info@everestbiotech.com)

Sales:

[sales@everestbiotech.com](mailto:sales@everestbiotech.com)

Tech support:

[support@everestbiotech.com](mailto:support@everestbiotech.com)

Tel: +44 (0)1869 238326

[www.everestbiotech.com](http://www.everestbiotech.com)

**Research Use Only. Not for  
diagnostic or therapeutic use.**

## EB06689 - Goat Anti-MEPI / SERPINI2 Antibody

Size: 100µg specific antibody in 200µl



### Target Protein

**Principal Names:** SERPINI2, MEPI, PI14, PANCPIN, TSA2004, SERPIN12, serine (or cysteine) proteinase inhibitor, clade I (neuroserpin), member 2, serpin peptidase inhibitor, clade I (pancpin), member 2, myoepithelium-derived serine protease inhibitor, protease inhibitor 14, serine (or cysteine) proteinase inhibitor, clade I (pancpin), member 2

**Official Symbol:** SERPINI2

**Accession Number(s):** NP\_006208.1; NP\_001012303.1

**Human GeneID(s):** [5276](#)

**Non-Human GeneID(s):** 67931 (mouse), 171149 (rat)

**Important Comments:** This antibody is expected to recognise both reported isoforms (NP\_006208.1; NP\_001012303.1).

### Immunogen

Peptide with sequence C-KGDWKQKFRKEDTQ, from the internal region of the protein sequence according to NP\_006208.1; NP\_001012303.1.

Please note the [peptide](#) is available for sale.

### Purification and Storage

Purified from goat serum by ammonium sulphate precipitation followed by antigen affinity chromatography using the immunizing peptide.

Supplied at 0.5 mg/ml in Tris saline, 0.02% sodium azide, pH7.3 with 0.5% bovine serum albumin.

Aliquot and store at -20°C. Minimize freezing and thawing.

### Applications Tested

**Peptide ELISA:** antibody detection limit dilution 1:64000.

**Western blot:** Approx 40kDa band observed in Human Pancreas lysates (calculated MW of 46.1kDa according to NP\_006208.1 and 47.4kDa according to NP\_001012303.1).

Recommended concentration: 0.3-1µg/ml. Primary incubation was 1 hour. This product has been successfully used in WB on Human in PMID: 21499210.

**IHC:** In paraffin embedded Human Pancreas, shows cytoplasmic staining of acinar cells and of rare cells in the islets of Langerhans. Recommended concentration, 3µg/ml. This product has been successfully used in IHC on Human in PMID: 21499210.

### Species Reactivity

**Tested:** Human

**Expected from sequence similarity:** Human, Mouse, Rat, Dog

### Specific Reference

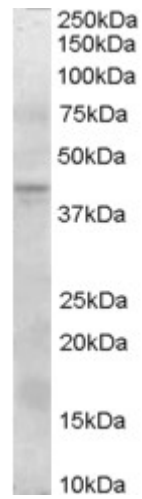
**This antibody has been successfully used in WB and IHC on Human:**

Wehr AY, Furth EE, Sangar V, Blair IA, Yu KH.

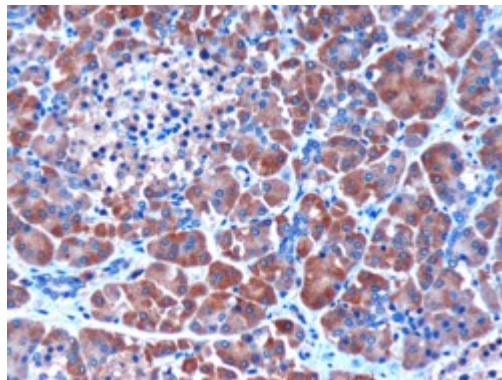
Analysis of the human pancreatic stellate cell secreted proteome.

Pancreas. 2011 May;40(4):557-66.

PMID: 21499210



EB06689 (0.3 $\mu$ g/ml) staining of Human Pancreas lysate (35 $\mu$ g protein in RIPA buffer). Detected by chemiluminescence.



EB06689 (3 $\mu$ g/ml) staining of paraffin embedded Human Pancreas. Microwaved antigen retrieval with citrate buffer pH 6, HRP-staining