



International Office

Everest Biotech Ltd

Vector Laboratories, Inc.
6737 Mowry Ave
Newark, CA 94560
United States

Customer Service:

customerservice@vectorlabs.com

Technical Service:

technical@vectorlabs.com

Tel: +1 (800) 227-6666

www.everestbiotech.com

**Research Use Only. Not for
diagnostic or therapeutic use.**

EB08209 - Goat Anti-MERTK Antibody

Size: 100µg specific antibody in 200µl



Target Protein

Principal Names: MERTK, c-mer proto-oncogene tyrosine kinase, MER, MGC133349, c-mer, MER receptor tyrosine kinase, STK kinase

Official Symbol: MERTK

Accession Number(s): NP_006334.2

Human GeneID(s): [10461](#)

Immunogen

Peptide with sequence C-EVHDSKPHEGRY, from the internal region of the protein sequence according to NP_006334.2.

Please note the [peptide](#) is available for sale.

Purification and Storage

Purified from goat serum by ammonium sulphate precipitation followed by antigen affinity chromatography using the immunizing peptide.

Supplied at 0.5 mg/ml in Tris saline, 0.02% sodium azide, pH7.3 with 0.5% bovine serum albumin.

Aliquot and store at -20°C. Minimize freezing and thawing.

Applications Tested

Peptide ELISA: antibody detection limit dilution 1:16000.

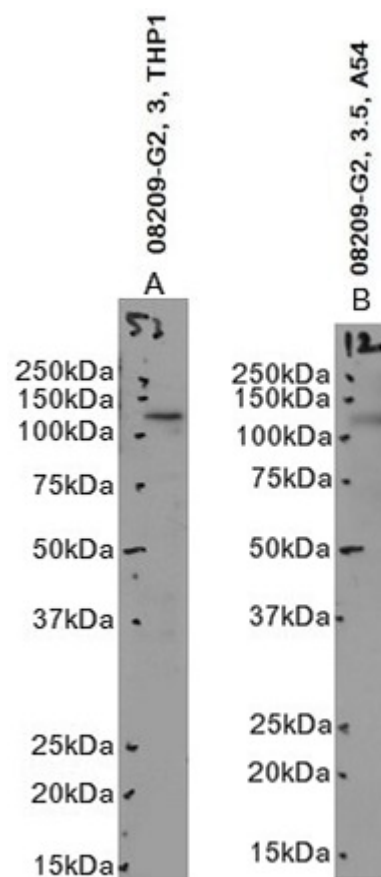
Western blot: Approx. 125kDa band observed in lysates of cell lines THP-1 and A549 (calculated MW of 110.0kDa according to NP_006334.2). A 110kDa band was alternatively observed in some lysates. Recommended concentration: 2.5-3.5µg/ml. Primary incubation 1 hour at room temperature.

Flow Cytometry: Flow cytometric analysis of THP-1 cells. Recommended concentration: 10ug/ml.

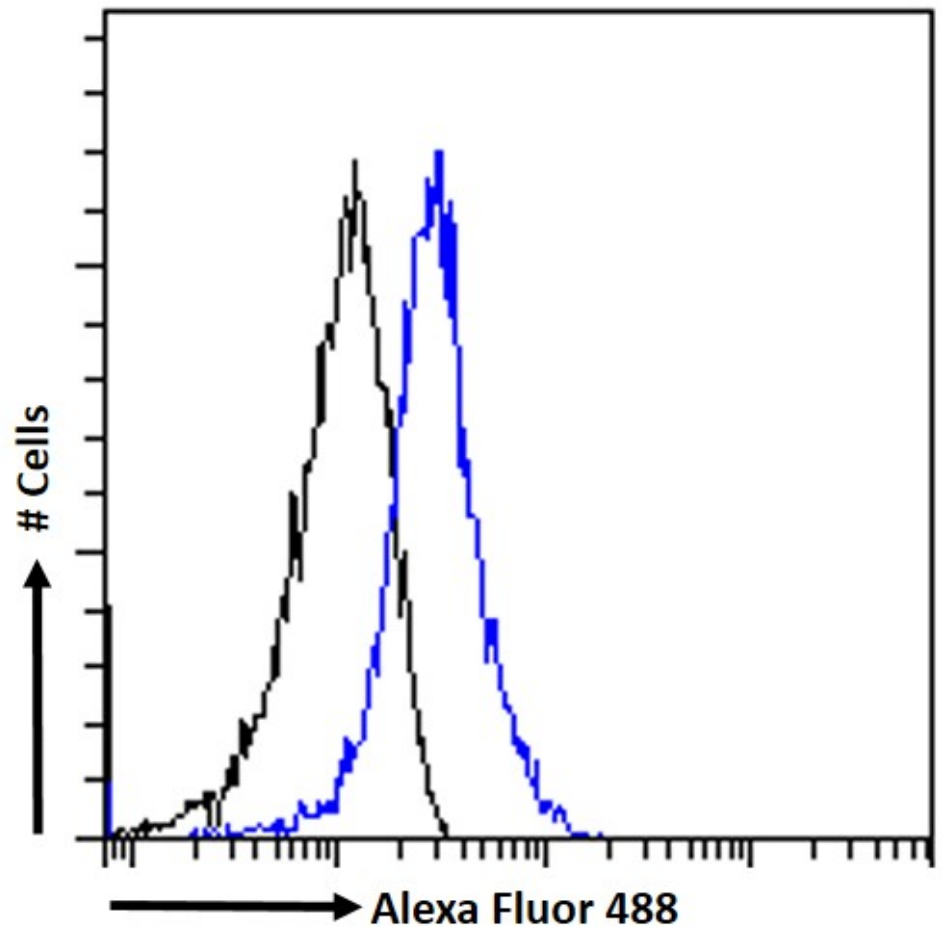
Species Reactivity

Tested: Human

Expected from sequence similarity: Human



EB08209 optimised QC. Primary incubation 1 hour at room temperature.
 Image A: THP-1 cell lysate at primary Ab concentration 3ug/ml. Image B: A549 cell lysate at primary Ab concentration 3.5ug/ml. (Loaded 35µg protein in RIPA buffer, per lane).
 Detected by chemiluminescence.



EB08209 Flow cytometric analysis of paraformaldehyde fixed THP1 cells (blue line) permeabilized with 0.5% Triton. Primary incubation 1hr (10ug/ml) followed by Alexa Fluor 488® conjugated secondary antibody (1ug/ml). IgG control: Unimmunized goat IgG (black line) followed by Alexa Fluor 488 secondary antibody.