



UK Office

Everest Biotech Ltd

Cherwell Innovation Centre
77 Heyford Park
Upper Heyford
Oxfordshire
OX25 5HD
UK

Enquiries:

info@everestbiotech.com

Sales:

sales@everestbiotech.com

Tech support:

support@everestbiotech.com

Tel: +44 (0)1869 238326

Fax: +44 (0)1869 238327

US Office

Everest Biotech c/o Abcore

405 Maple Street, Suite A106
Ramona,
CA 92065
USA

Inquiries:

info@everestbiotech.com

Sales:

usasales@everestbiotech.com

Tech support:

support@everestbiotech.com

Tel: 888-320-4628 (toll-free)

Fax: 888-841-9041

www.everestbiotech.com

**Research Use Only. Not for
diagnostic or therapeutic use.**

EB09351 - Goat Anti-MEST Antibody

Size: 100µg specific antibody in 200µl



Target Protein

Principal Names: MEST, mesoderm specific transcript homolog (mouse), DKFZp686L18234, MGC111102, MGC8703, PEG1, mesoderm specific transcript, paternally expressed gene 1

Official Symbol: MEST

Accession Number(s): NP_002393.2; NP_803490.1

Human GeneID(s): [4232](#)

Non-Human GeneID(s): 17294 (mouse), 58827 (rat)

Important Comments: This antibody is expected to recognize both reported isoforms (NP_002393.2; NP_803490.1). Reported variants NP_803490.1 and NP_803491.1 represent identical protein.

Immunogen

Peptide with sequence C-QELLYRYKQNRSGR, from the internal region of the protein sequence according to NP_002393.2; NP_803490.1.

Please note the [peptide](#) is available for sale.

Purification and Storage

Purified from goat serum by ammonium sulphate precipitation followed by antigen affinity chromatography using the immunizing peptide.

Supplied at 0.5 mg/ml in Tris saline, 0.02% sodium azide, pH7.3 with 0.5% bovine serum albumin.

Aliquot and store at -20°C. Minimize freezing and thawing.

Applications Tested

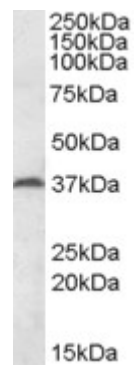
Peptide ELISA: antibody detection limit dilution 1:8000.

Western blot: Approx 37kDa band observed in Mouse and Rat Testis lysates (calculated MW of 37.6kDa according to Human NP_803490.1 and 38.8kDa according to Rat NP_001009617.1). Recommended concentration: 0.2-0.5µg/ml.

Species Reactivity

Tested: Mouse, Rat

Expected from sequence similarity: Human, Mouse, Rat, Dog, Cow



EB09351 (0.2µg/ml) staining of Mouse Testis lysate (35µg protein in RIPA buffer). Primary incubation was 1 hour. Detected by chemiluminescence.