



International Office

Everest Biotech Ltd

Vector Laboratories, Inc.
6737 Mowry Ave
Newark, CA 94560
United States

Customer Service:

customerservice@vectorlabs.com

Technical Service:

technical@vectorlabs.com

Tel: +1 (800) 227-6666

www.everestbiotech.com

**Research Use Only. Not for
diagnostic or therapeutic use.**

EB07790 - Goat Anti-MIC1 / C18orf8 Antibody

Size: 100µg specific antibody in 200µl



Target Protein

Principal Names: C18orf8, chromosome 18 open reading frame 8, FLJ23453, HsT2591, MIC1, colon cancer associated protein Mic1, colon cancer-associated protein Mic1

Official Symbol: C18orf8

Accession Number(s): NP_037458.3

Human GeneID(s): [29919](#)

Non-Human GeneID(s): 76482 (mouse), 291784 (rat)

Immunogen

Peptide with sequence C-DKLNHEYKKYLDAEQ, from the internal region of the protein sequence according to NP_037458.3.

Please note the [peptide](#) is available for sale.

Purification and Storage

Purified from goat serum by ammonium sulphate precipitation followed by antigen affinity chromatography using the immunizing peptide.

Supplied at 0.5 mg/ml in Tris saline, 0.02% sodium azide, pH7.3 with 0.5% bovine serum albumin.

Aliquot and store at -20°C. Minimize freezing and thawing.

Applications Tested

Peptide ELISA: antibody detection limit dilution 1:32000.

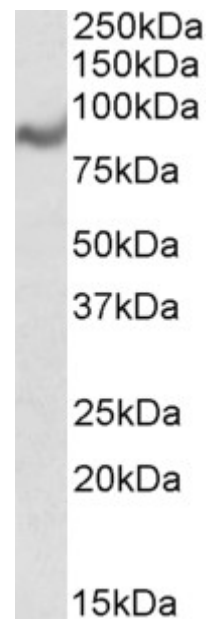
Western blot: Approx 80kDa band observed in Human Breast lysates (calculated MW of 75.0kDa according to NP_037458.3). Recommended concentration: 1-3µg/ml.

IHC: In paraffin embedded Small Intestine shows textured cytoplasm staining in of the enterocytes. Recommended concentration, 5-10µg/ml.

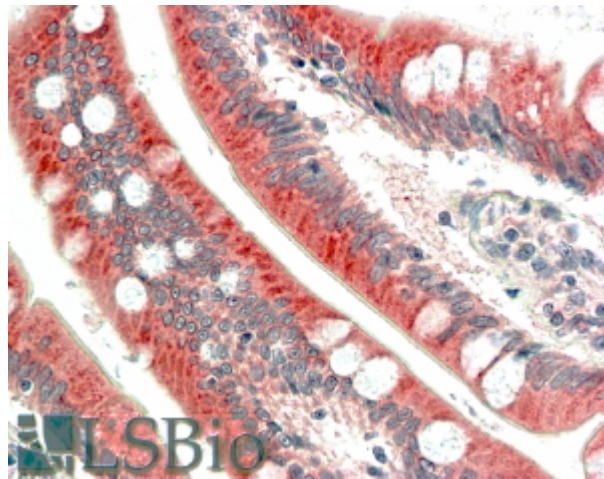
Species Reactivity

Tested: Human

Expected from sequence similarity: Human, Mouse, Rat, Dog



EB07790 (1 μ g/ml) staining of Human Breast lysate (35 μ g protein in RIPA buffer). Primary incubation was 1 hour.
Detected by chemiluminescence.



EB07790 (5 μ g/ml) staining of paraffin embedded Human Small Intestine. Steamed antigen retrieval with citrate buffer pH 6, AP-staining.