



UK Office

Everest Biotech Ltd

Cherwell Innovation Centre
77 Heyford Park
Upper Heyford
Oxfordshire
OX25 5HD
UK

Enquiries:

info@everestbiotech.com

Sales:

sales@everestbiotech.com

Tech support:

support@everestbiotech.com

Tel: +44 (0)1869 238326

Fax: +44 (0)1869 238327

US Office

Everest Biotech c/o Abcore

405 Maple Street, Suite A106
Ramona,
CA 92065
USA

Inquiries:

info@everestbiotech.com

Sales:

usasales@everestbiotech.com

Tech support:

support@everestbiotech.com

Tel: 888-320-4628 (toll-free)

Fax: 888-841-9041

www.everestbiotech.com

**Research Use Only. Not for
diagnostic or therapeutic use.**

EB05823 - Goat Anti-MID2 / TRIM1 Antibody

Size: 100µg specific antibody in 200µl



Target Protein

Principal Names: MID2, TRIM1, midline 2, FXY2, midin 2, tripartite motif protein 1, RP6-191P20.2, FLJ37715, FLJ41813, FXY2, RNF60

Official Symbol: MID2

Accession Number(s): NP_036348.2; NP_438112.2

Human GeneID(s): [11043](#)

Non-Human GeneID(s): 23947 (mouse)

Important Comments: This antibody is expected to recognise both human isoforms of this protein.

Immunogen

Peptide with sequence QESPYVSGMKTCH, from the C Terminus of the protein sequence according to NP_036348.2; NP_438112.2.

Please note the [peptide](#) is available for sale.

Purification and Storage

Purified from goat serum by ammonium sulphate precipitation followed by antigen affinity chromatography using the immunizing peptide.

Supplied at 0.5 mg/ml in Tris saline, 0.02% sodium azide, pH7.3 with 0.5% bovine serum albumin.

Aliquot and store at -20°C. Minimize freezing and thawing.

Applications Tested

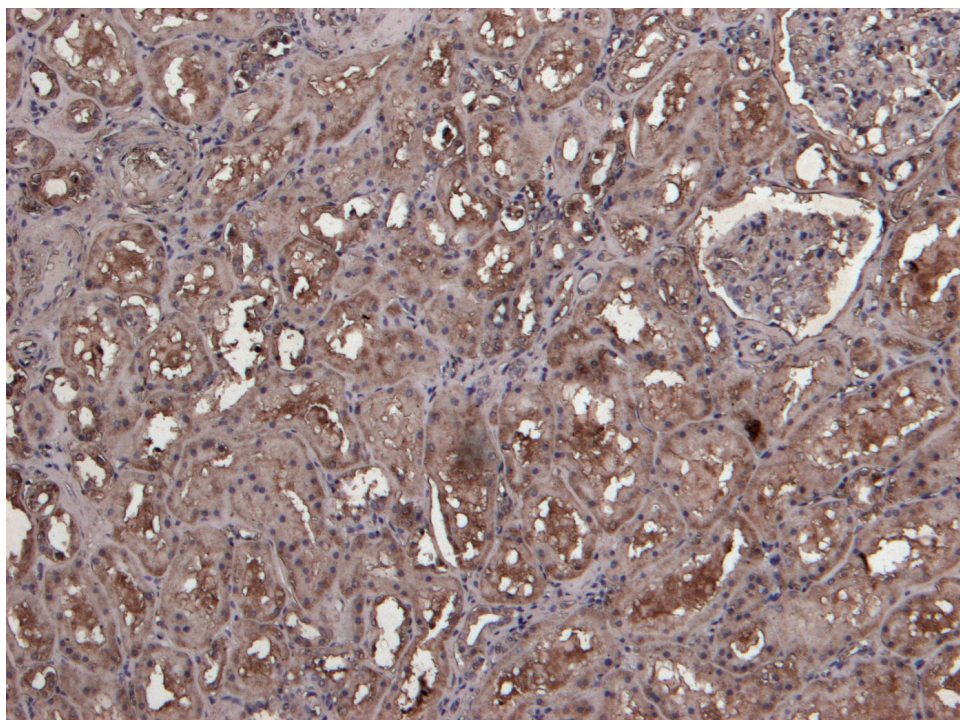
Peptide ELISA: antibody detection limit dilution 1:4000.

IHC: Paraffin embedded Human Kidney. Recommended concentration: 8µg/ml.

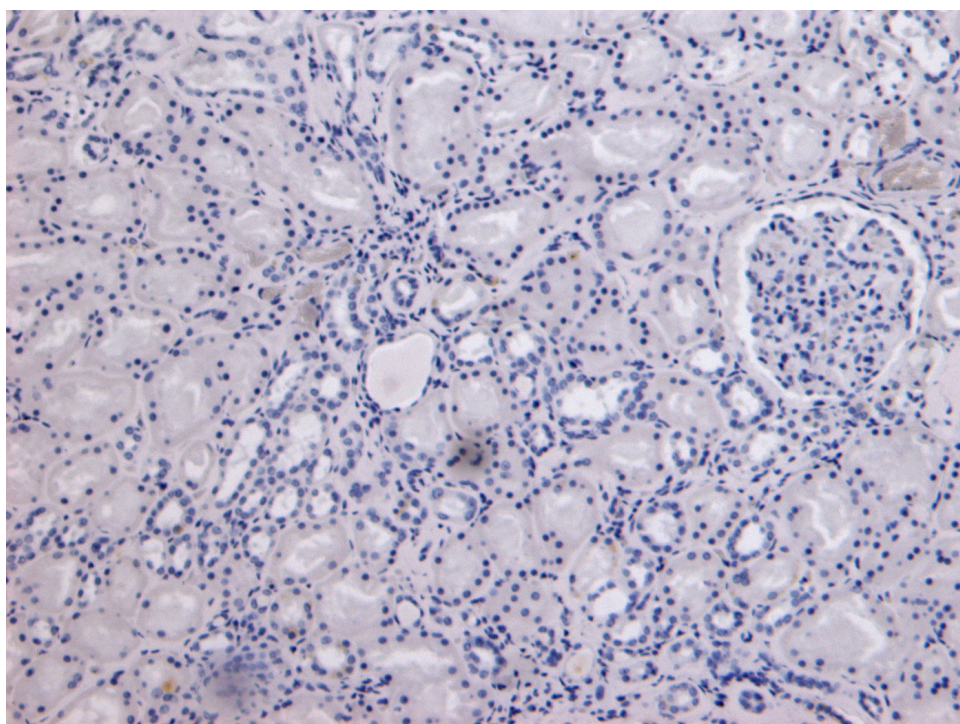
Species Reactivity

Tested: Human

Expected from sequence similarity: Human, Mouse, Rat, Dog, Pig, Cow



EB05823 (8 μ g/ml) staining of paraffin embedded Human Kidney. Heat induced antigen retrieval with citrate buffer pH 6, HRP-staining.



EB05823 Negative Control showing staining of paraffin embedded Human Kidney, with no primary antibody.