



UK Office

Everest Biotech Ltd

Cherwell Innovation Centre
77 Heyford Park
Upper Heyford
Oxfordshire
OX25 5HD
UK

Enquiries:

info@everestbiotech.com

Sales:

sales@everestbiotech.com

Tech support:

support@everestbiotech.com

Tel: +44 (0)1869 238326

www.everestbiotech.com

**Research Use Only. Not for
diagnostic or therapeutic use.**

EB10898 - Goat Anti-MKRN1 (aa105-118) Antibody

Size: 100µg specific antibody in 200µl



Target Protein

Principal Names: MKRN1, makorin ring finger protein 1, FLJ21334, RNF61, E3 ubiquitin-protein ligase makorin-1, OTTHUMP00000212121, OTTHUMP00000212124, RING finger protein 61

Official Symbol: MKRN1

Accession Number(s): NP_038474.2; NP_001138597.1; NP_001278592.1

Human GeneID(s): [23608](#)

Non-Human GeneID(s): 54484 (mouse)

Important Comments: This antibody is expected to recognize all reported isoforms (NP_038474.2; NP_001138597.1; NP_001278592.1).

Immunogen

Peptide with sequence C-RYEHKPLKQEEAT, from the internet region of the protein sequence according to NP_038474.2; NP_001138597.1; NP_001278592.1.

Please note the [peptide](#) is available for sale.

Purification and Storage

Purified from goat serum by ammonium sulphate precipitation followed by antigen affinity chromatography using the immunizing peptide.

Supplied at 0.5 mg/ml in Tris saline, 0.02% sodium azide, pH7.3 with 0.5% bovine serum albumin.

Aliquot and store at -20°C. Minimize freezing and thawing.

Applications Tested

Peptide ELISA: antibody detection limit dilution 1:64000.

Western blot: Approx. 55kDa band observed in lysates of cell line THP-1 and in Human Testis lysates (calculated MW of 53.3kDa according to NP_038474.2). Recommended concentration: 0.1-0.5µg/ml. Primary incubation 1 hour at room temperature. **Positive**

Control: A batch specific positive control lysate is available for this product. Please contact Sales@everestbiotech.com for availability.

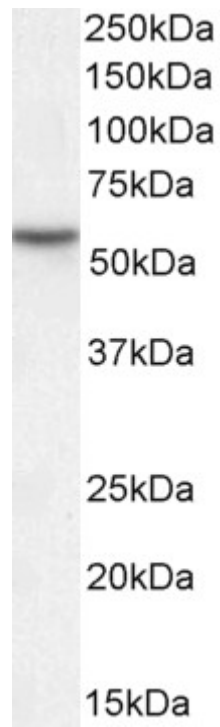
Immunofluorescence: Strong expression of the protein seen in the nuclei and cytoplasm of U2OS cells. Recommended concentration: 10µg/ml.

Flow Cytometry: Flow cytometric analysis of THP-1 cells. Recommended concentration: 10µg/ml.

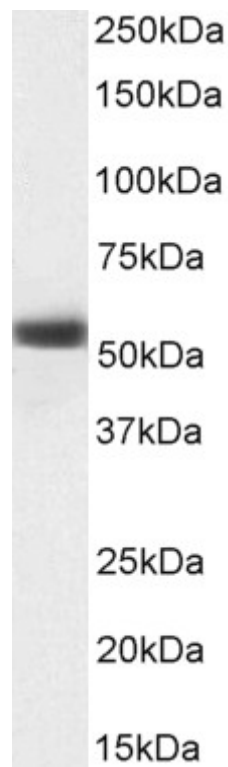
Species Reactivity

Tested: Human

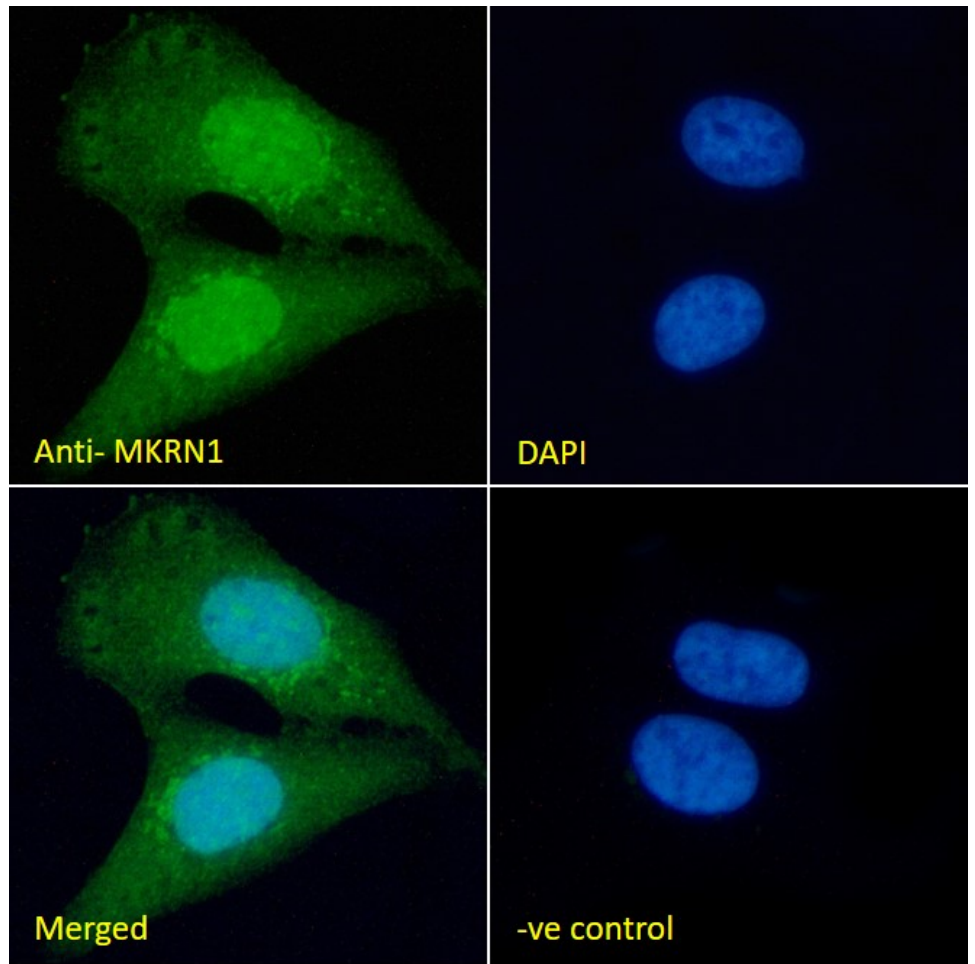
Expected from sequence similarity: Human, Cow



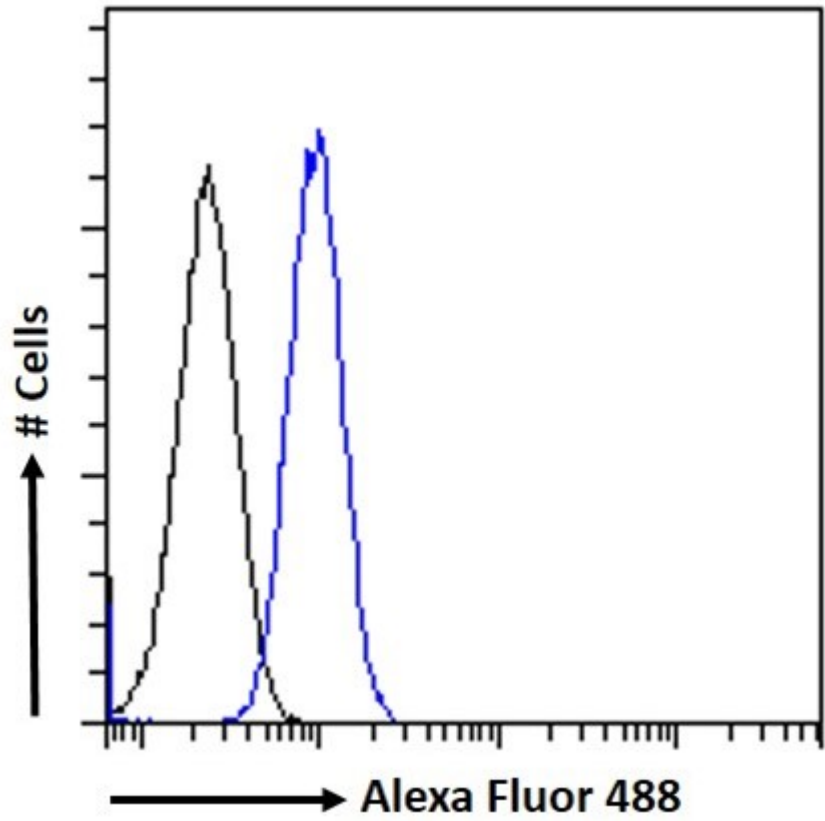
EB10898 (0.5µg/ml) staining of THP-1 cell lysate (35µg protein in RIPA buffer). Detected by chemiluminescence.



EB10898 (0.5µg/ml) staining of Human Testes lysate (35µg protein in RIPA buffer). Detected by chemiluminescence.



EB10898 Immunofluorescence analysis of paraformaldehyde fixed U2OS cells, permeabilized with 0.15% Triton. Primary incubation 1hr (10ug/ml) followed by Alexa Fluor 488 secondary antibody (2ug/ml), showing nuclear and cytoplasmic staining. The nuclear stain is DAPI (blue). Negative control: Unimmunized goat IgG (10ug/ml) followed by Alexa Fluor 488 secondary antibody (2ug/ml).



EB10898 Flow cytometric analysis of paraformaldehyde fixed THP-1 cells (blue line), permeabilized with 0.5% Triton. Primary incubation 1hr (10ug/ml) followed by Alexa Fluor 488 secondary antibody (1ug/ml). IgG control: Unimmunized goat IgG (black line) followed by Alexa Fluor 488 secondary antibody.