

## UK Office

### Everest Biotech Ltd

Cherwell Innovation Centre  
77 Heyford Park  
Upper Heyford  
Oxfordshire  
OX25 5HD  
UK

Enquiries:

[info@everestbiotech.com](mailto:info@everestbiotech.com)

Sales:

[sales@everestbiotech.com](mailto:sales@everestbiotech.com)

Tech support:

[support@everestbiotech.com](mailto:support@everestbiotech.com)

Tel: +44 (0)1869 238326

[www.everestbiotech.com](http://www.everestbiotech.com)

**Research Use Only. Not for  
diagnostic or therapeutic use.**

## EB09756 - Goat Anti-MLX Antibody

Size: 100µg specific antibody in 200µl



### Target Protein

**Principal Names:** MLX, MAX-like protein X, MAD7, MXD7, TCFL4, bHLHd13, BigMax protein, MAX-like bHLHZIP protein, transcription factor-like 4, transcription factor-like protein 4

**Official Symbol:** MLX

**Accession Number(s):** NP\_937848.1; NP\_937847.1; NP\_733752.1

**Human GeneID(s):** [6945](#)

**Non-Human GeneID(s):** 21428 (mouse), 360631 (rat)

**Important Comments:** This antibody is expected to recognize all three reported isoforms (NP\_937848.1; NP\_937847.1; NP\_733752.1).

### Immunogen

Peptide with sequence C-QIVKAHQDNPHEGED, from the internal region of the protein sequence according to NP\_937848.1; NP\_937847.1; NP\_733752.1.

Please note the [peptide](#) is available for sale.

### Purification and Storage

Purified from goat serum by ammonium sulphate precipitation followed by antigen affinity chromatography using the immunizing peptide.

Supplied at 0.5 mg/ml in Tris saline, 0.02% sodium azide, pH7.3 with 0.5% bovine serum albumin.

Aliquot and store at -20°C. Minimize freezing and thawing.

### Applications Tested

**Peptide ELISA:** antibody detection limit dilution 1:128000.

**Western blot:** Preliminary experiments in Human, Mouse and Rat Liver lysates gave no specific signal but low background (at antibody concentration up to 1µg/ml).

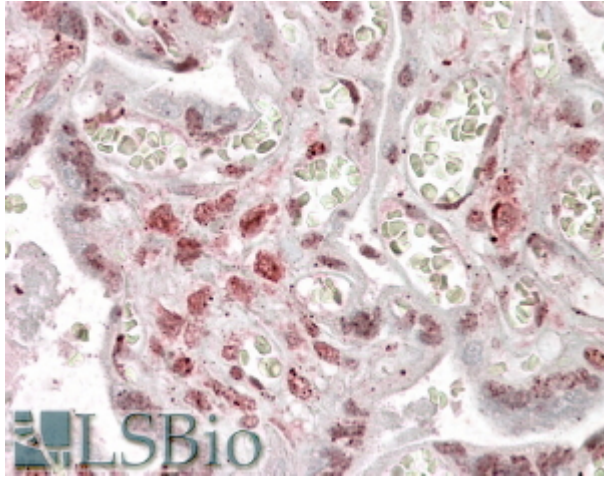
**IHC:** In paraffin embedded Human Placenta shows nuclear staining of trophoblasts.

Recommended concentration: 2.5-3.8µg/ml.

### Species Reactivity

**Tested:** Human

**Expected from sequence similarity:** Human, Mouse, Rat, Dog, Cow



EB09756 (3.8µg/ml) staining of paraffin embedded Human Placenta. Steamed antigen retrieval with citrate buffer pH 6, AP-staining.