



UK Office

Everest Biotech Ltd

Cherwell Innovation Centre
77 Heyford Park
Upper Heyford
Oxfordshire
OX25 5HD
UK

Enquiries:

info@everestbiotech.com

Sales:

sales@everestbiotech.com

Tech support:

support@everestbiotech.com

Tel: +44 (0)1869 238326

Fax: +44 (0)1869 238327

US Office

Everest Biotech c/o Abcore

405 Maple Street, Suite A106
Ramona,
CA 92065
USA

Inquiries:

info@everestbiotech.com

Sales:

usasales@everestbiotech.com

Tech support:

support@everestbiotech.com

Tel: 888-320-4628 (toll-free)

Fax: 888-841-9041

www.everestbiotech.com

**Research Use Only. Not for
diagnostic or therapeutic use.**

EB09756 - Goat Anti-MLX Antibody

Size: 100µg specific antibody in 200µl



Target Protein

Principal Names: MLX, MAX-like protein X, MAD7, MXD7, TCFL4, bHLHd13, BigMax protein, MAX-like bHLHZIP protein, transcription factor-like 4, transcription factor-like protein 4

Official Symbol: MLX

Accession Number(s): NP_937848.1; NP_937847.1; NP_733752.1

Human GeneID(s): [6945](#)

Non-Human GeneID(s): 21428 (mouse), 360631 (rat)

Important Comments: This antibody is expected to recognize all three reported isoforms (NP_937848.1; NP_937847.1; NP_733752.1).

Immunogen

Peptide with sequence C-QIVKAHQDNPHGED, from the internal region of the protein sequence according to NP_937848.1; NP_937847.1; NP_733752.1.

Please note the [peptide](#) is available for sale.

Purification and Storage

Purified from goat serum by ammonium sulphate precipitation followed by antigen affinity chromatography using the immunizing peptide.

Supplied at 0.5 mg/ml in Tris saline, 0.02% sodium azide, pH7.3 with 0.5% bovine serum albumin.

Aliquot and store at -20°C. Minimize freezing and thawing.

Applications Tested

Peptide ELISA: antibody detection limit dilution 1:128000.

Western blot: Preliminary experiments in Human, Mouse and Rat Liver lysates gave no specific signal but low background (at antibody concentration up to 1µg/ml).

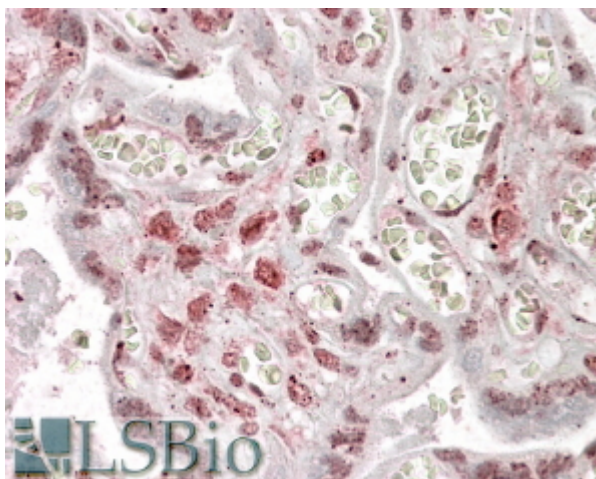
IHC: In paraffin embedded Human Placenta shows nuclear staining of trophoblasts.

Recommended concentration: 2.5-3.8µg/ml.

Species Reactivity

Tested: Human

Expected from sequence similarity: Human, Mouse, Rat, Dog, Cow



EB09756 (3.8µg/ml) staining of paraffin embedded Human Placenta. Steamed antigen retrieval with citrate buffer pH 6, AP-staining.