

UK Office

Everest Biotech Ltd

Cherwell Innovation Centre
77 Heyford Park
Upper Heyford
Oxfordshire
OX25 5HD
UK

Enquiries:

info@everestbiotech.com

Sales:

sales@everestbiotech.com

Tech support:

support@everestbiotech.com

Tel: +44 (0)1869 238326

www.everestbiotech.com

**Research Use Only. Not for
diagnostic or therapeutic use.**

EB11973 - Goat Anti-MMP14 Antibody

Size: 100µg specific antibody in 200µl



Target Protein

Principal Names: MMP14, matrix metalloproteinase 14 (membrane-inserted), 1, MMP-14, MMP-X1, MT-MMP, MT-MMP 1, MT1-MMP, MT1MMP, MTMMP1, matrix metalloproteinase 14 (membrane-inserted), matrix metalloproteinase-14, membrane type 1 metalloprotease, membrane-type matrix metalloproteinase 1, membrane-type-1 matrix metalloproteinase

Official Symbol: MMP14

Accession Number(s): NP_004986.1

Human GeneID(s): [4323](#)

Non-Human GeneID(s): 17387 (mouse), 81707 (rat)

Immunogen

Peptide with sequence C-ESATPLRFREVP, from the internal region of the protein sequence according to NP_004986.1.

Please note the [peptide](#) is available for sale.

Purification and Storage

Purified from goat serum by ammonium sulphate precipitation followed by antigen affinity chromatography using the immunizing peptide.

Supplied at 0.5 mg/ml in Tris saline, 0.02% sodium azide, pH7.3 with 0.5% bovine serum albumin.

Aliquot and store at -20°C. Minimize freezing and thawing.

Applications Tested

Peptide ELISA: antibody detection limit dilution 1:128000.

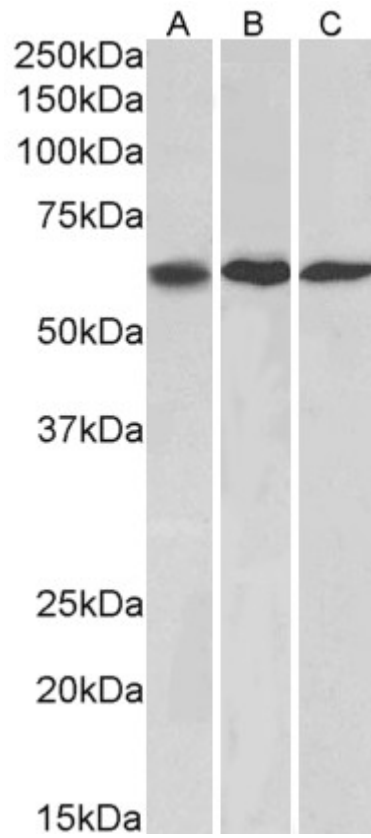
Western blot: Approx 60kDa band observed in lysates of cell lines NIH3T3, A549 and HeLa (calculated MW of 65.9kDa according to NP_004986.1). Recommended concentration: 1-3µg/ml. Primary incubation was 1 hour.

IHC: Paraffin embedded Human Liver. Recommended concentration: 5µg/ml.

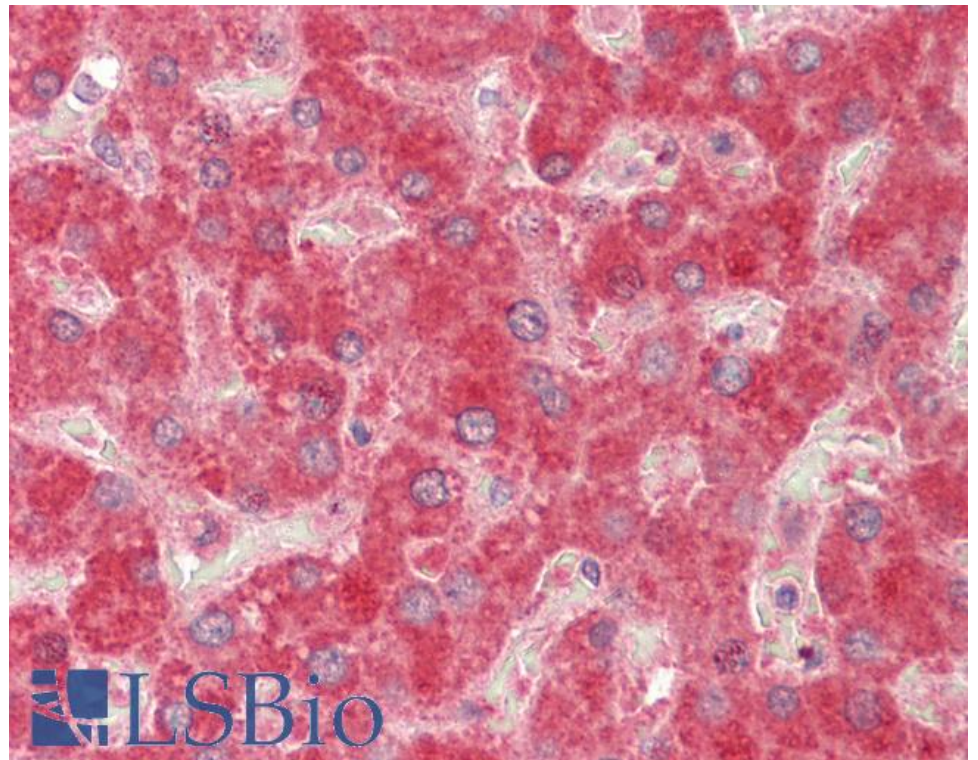
Species Reactivity

Tested: Human, Mouse

Expected from sequence similarity: Human, Mouse, Rat, Dog, Pig, Cow



EB11973 (1 μ g/ml) staining of NIH3T3, (A) A549 (B) and HeLa (C) lysates (35 μ g protein in RIPA buffer).
Detected by chemiluminescence.



EB11973 (5 μ g/ml) staining of paraffin embedded Human Liver. Steamed antigen retrieval with citrate buffer pH 6, AP-staining.