



International Office

Everest Biotech Ltd

Vector Laboratories, Inc.
6737 Mowry Ave
Newark, CA 94560
United States

Customer Service:

customerservice@vectorlabs.com

Technical Service:

technical@vectorlabs.com

Tel: +1 (800) 227-6666

www.everestbiotech.com

**Research Use Only. Not for
diagnostic or therapeutic use.**

EB06891 - Goat Anti-MMP7 Antibody

Size: 100µg specific antibody in 200µl



Target Protein

Principal Names: MMP7, matrix metalloproteinase 7 (matrilysin, uterine), HGNC:7174, MMP-7, MPSL1, PUMP-1, matrin, matrix metalloproteinase 7, uterine matrilysin, matrix metalloproteinase 7

Official Symbol: MMP7

Accession Number(s): NP_002414.1

Human GeneID(s): [4316](#)

Immunogen

Peptide with sequence C-QKLYGKRSNSRKK, from the C Terminus of the protein sequence according to NP_002414.1.

Please note the [peptide](#) is available for sale.

Purification and Storage

Purified from goat serum by ammonium sulphate precipitation followed by antigen affinity chromatography using the immunizing peptide.

Supplied at 0.5 mg/ml in Tris saline, 0.02% sodium azide, pH7.3 with 0.5% bovine serum albumin.

Aliquot and store at -20°C. Minimize freezing and thawing.

Applications Tested

Peptide ELISA: antibody detection limit dilution 1:64000.

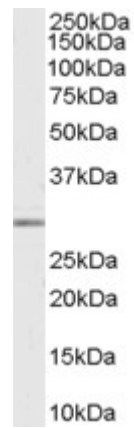
Western blot: Approx 28kDa band observed in Human Breast, Ovary and Placenta lysates (calculated MW of 29.7kDa according to NP_002414.1). Recommended concentration: 0.03-0.1µg/ml.

IHC: In paraffin embedded Human Uterus shows basal staining of an endometrial gland. Recommended concentration, 3-6µg/ml.

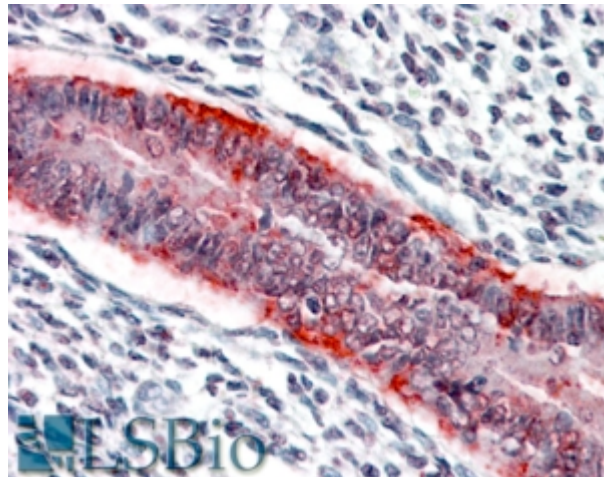
Species Reactivity

Tested: Human

Expected from sequence similarity: Human



EB06891 (0.03 μ g/ml) staining of Human Breast lysate (35 μ g protein in RIPA buffer). Primary incubation was 1 hour. Detected by chemiluminescence.



EB06891 (3.8 μ g/ml) staining of paraffin embedded Human Uterus. Steamed antigen retrieval with citrate buffer pH 6, AP-staining.