



## UK Office

### Everest Biotech Ltd

Cherwell Innovation Centre  
77 Heyford Park  
Upper Heyford  
Oxfordshire  
OX25 5HD  
UK

Enquiries:

[info@everestbiotech.com](mailto:info@everestbiotech.com)

Sales:

[sales@everestbiotech.com](mailto:sales@everestbiotech.com)

Tech support:

[support@everestbiotech.com](mailto:support@everestbiotech.com)

Tel: +44 (0)1869 238326

[www.everestbiotech.com](http://www.everestbiotech.com)

**Research Use Only. Not for  
diagnostic or therapeutic use.**

## EB06891 - Goat Anti-MMP7 Antibody

Size: 100µg specific antibody in 200µl



### Target Protein

**Principal Names:** MMP7, matrix metalloproteinase 7 (matrilysin, uterine), HGNC:7174, MMP-7, MPSL1, PUMP-1, matrin, matrix metalloproteinase 7, uterine matrilysin, matrix metalloproteinase 7

**Official Symbol:** MMP7

**Accession Number(s):** NP\_002414.1

**Human GeneID(s):** [4316](#)

### Immunogen

Peptide with sequence C-QKLYGKRSNSRKK, from the C Terminus of the protein sequence according to NP\_002414.1.

Please note the [peptide](#) is available for sale.

### Purification and Storage

Purified from goat serum by ammonium sulphate precipitation followed by antigen affinity chromatography using the immunizing peptide.

Supplied at 0.5 mg/ml in Tris saline, 0.02% sodium azide, pH7.3 with 0.5% bovine serum albumin.

Aliquot and store at -20°C. Minimize freezing and thawing.

### Applications Tested

**Peptide ELISA:** antibody detection limit dilution 1:64000.

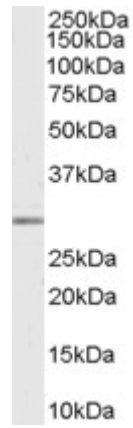
**Western blot:** Approx 28kDa band observed in Human Breast, Ovary and Placenta lysates (calculated MW of 29.7kDa according to NP\_002414.1). Recommended concentration: 0.03-0.1µg/ml.

**IHC:** In paraffin embedded Human Uterus shows basal staining of an endometrial gland. Recommended concentration, 3-6µg/ml.

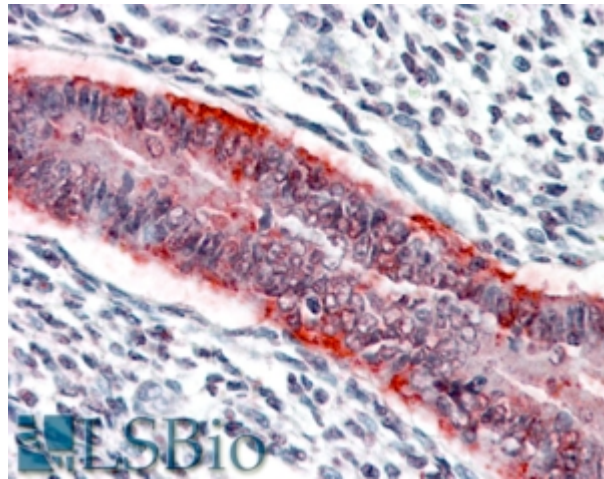
### Species Reactivity

**Tested:** Human

**Expected from sequence similarity:** Human



EB06891 (0.03 $\mu$ g/ml) staining of Human Breast lysate (35 $\mu$ g protein in RIPA buffer). Primary incubation was 1 hour. Detected by chemiluminescence.



EB06891 (3.8 $\mu$ g/ml) staining of paraffin embedded Human Uterus. Steamed antigen retrieval with citrate buffer pH 6, AP-staining.