



UK Office

Everest Biotech Ltd

Cherwell Innovation Centre
77 Heyford Park
Upper Heyford
Oxfordshire
OX25 5HD
UK

Enquiries:

info@everestbiotech.com

Sales:

sales@everestbiotech.com

Tech support:

support@everestbiotech.com

Tel: +44 (0)1869 238326

Fax: +44 (0)1869 238327

US Office

Everest Biotech c/o Abcore

405 Maple Street, Suite A106
Ramona,
CA 92065
USA

Inquiries:

info@everestbiotech.com

Sales:

usasales@everestbiotech.com

Tech support:

support@everestbiotech.com

Tel: 888-320-4628 (toll-free)

Fax: 888-841-9041

www.everestbiotech.com

**Research Use Only. Not for
diagnostic or therapeutic use.**

EB06890 - Goat Anti-MMP9 Antibody

Size: 100µg specific antibody in 200µl



Target Protein

Principal Names: MMP9, matrix metalloproteinase 9, gelatinase B, 92kDa gelatinase, 92kDa type IV collagenase, HGNC:7176, CLG4B, GELB, 92kD type IV collagenase, gelatinaseB, macrophage gelatinase, matrix metalloproteinase 9 (gelatinase B, 92kD gelatinase, 92kD type IV collagenase), type V collagenase

Official Symbol: MMP9

Accession Number(s): NP_004985.2

Human GeneID(s): [4318](#)

Immunogen

Peptide with sequence C-KLDSVFEEPLSKK, from the internal region of the protein sequence according to NP_004985.2.

Please note the [peptide](#) is available for sale.

Purification and Storage

Purified from goat serum by ammonium sulphate precipitation followed by antigen affinity chromatography using the immunizing peptide.

Supplied at 0.5 mg/ml in Tris saline, 0.02% sodium azide, pH7.3 with 0.5% bovine serum albumin.

Aliquot and store at -20°C. Minimize freezing and thawing.

Applications Tested

Peptide ELISA: antibody detection limit dilution 1:64000.

Western blot: Approx.80kDa and 70kDa bands observed in Human Peripheral Blood Mononucleocytes lysates. These bands correspond to the mature forms (<http://www.uniprot.org/uniprot/P14780>). This protein has a calculated MW of 78.5kDa according to NP_004985.2, but the precursor is usually seen as 92kDa or larger.

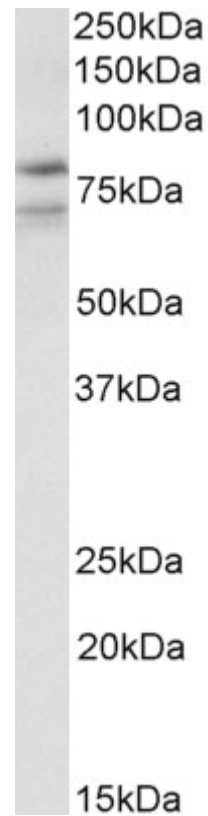
Recommended concentration: 1-3µg/ml. Approx.75kDa band observed in Mouse Heart lysates (calculated MW of 80.5kDa according to Mouse NP_038627.1). Recommended concentration: 0.1-0.3µg/ml.

Immunofluorescence: Strong expression of the protein seen in the cytoplasm of U2OS and HeLa cells. Recommended concentration: 10µg/ml.

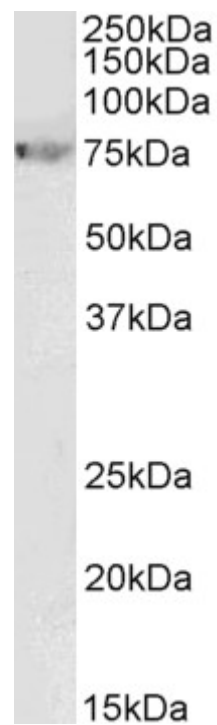
Species Reactivity

Tested: Human, Mouse

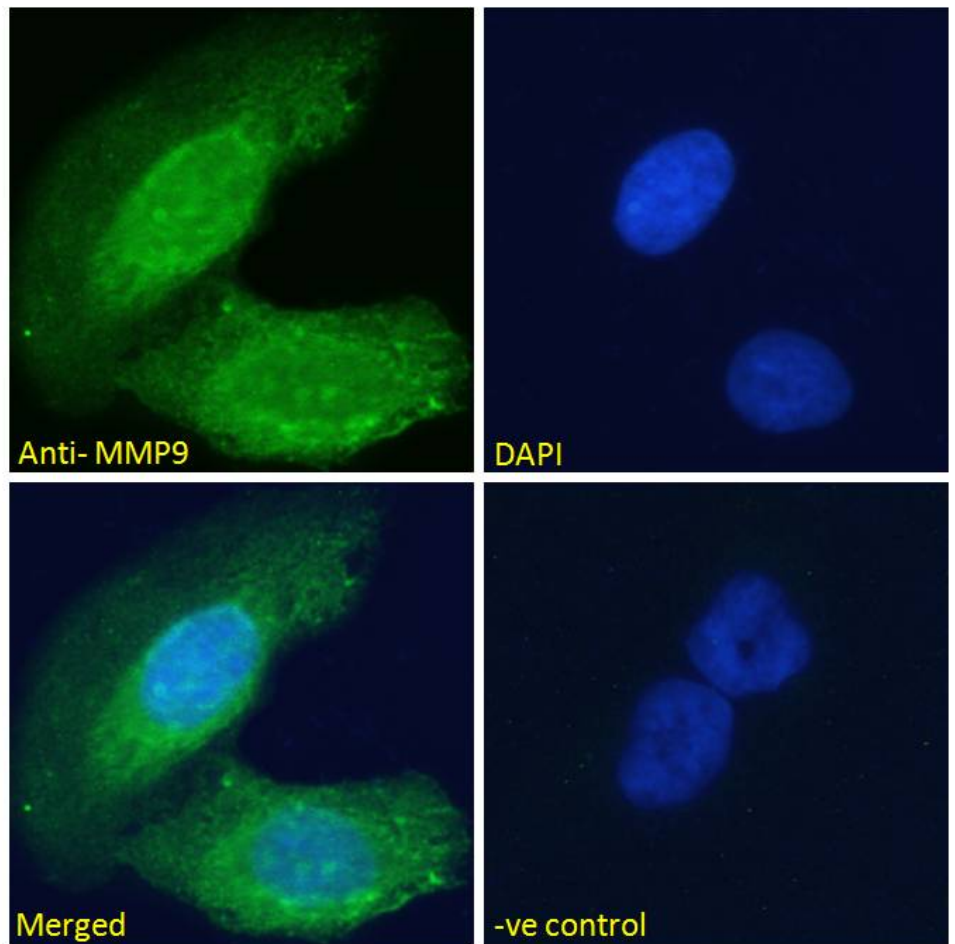
Expected from sequence similarity: Human



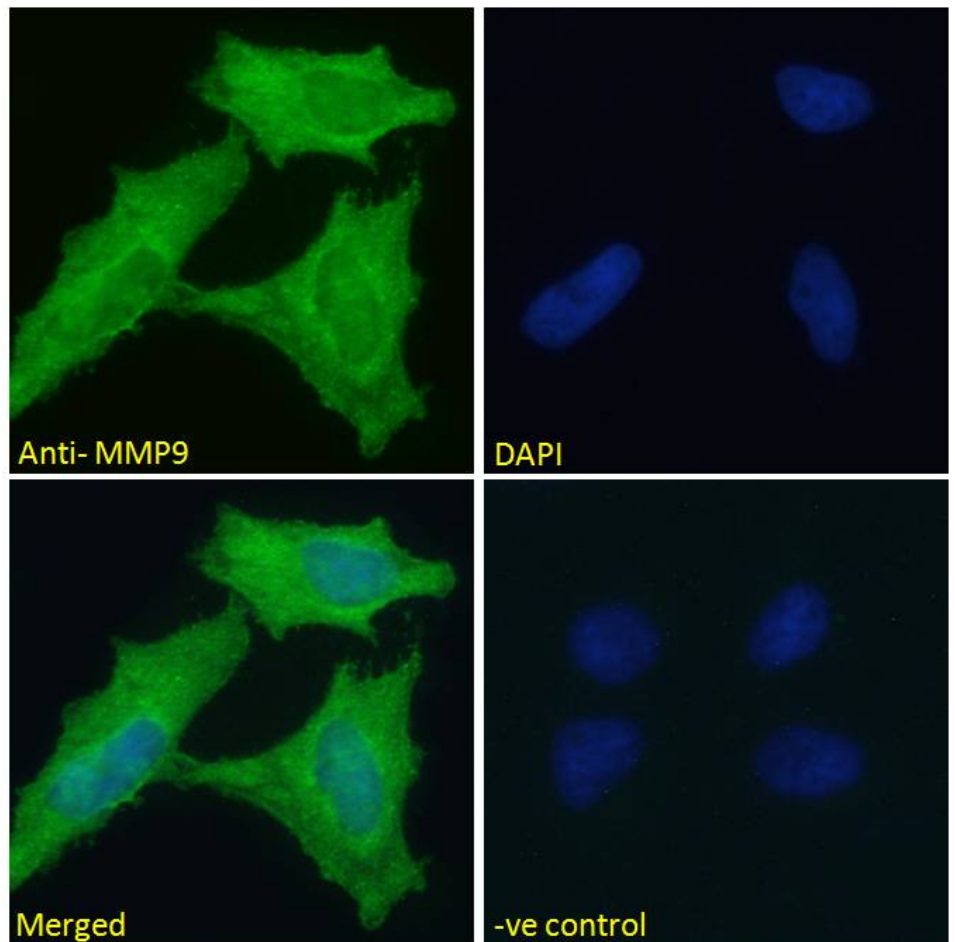
EB06890 (1 μ g/ml) staining of Peripheral Blood Lymphocytes lysate (35 μ g protein in RIPA buffer). Primary incubation was 1 hour. Detected by chemiluminescence.



EB06890 (0.1 μ g/ml) staining of Mouse Heart lysate (35 μ g protein in RIPA buffer). Primary incubation was 1 hour. Detected by chemiluminescence.



EB06890 Immunofluorescence analysis of paraformaldehyde fixed U2OS cells, permeabilized with 0.15% Triton. Primary incubation 1hr (10ug/ml) followed by Alexa Fluor 488 secondary antibody (2ug/ml), showing cytoplasmic staining. The nuclear stain is DAPI (blue). Negative control: Unimmunized goat IgG (10ug/ml) followed by Alexa Fluor 488 secondary antibody (2ug/ml).



EB06890 Immunofluorescence analysis of paraformaldehyde fixed HeLa cells, permeabilized with 0.15% Triton. Primary incubation 1hr (10ug/ml) followed by Alexa Fluor 488 secondary antibody (2ug/ml), showing cytoplasmic staining. The nuclear stain is DAPI (blue). Negative control: Unimmunized goat IgG (10ug/ml) followed by Alexa Fluor 488 secondary antibody (2ug/ml).