



## UK Office

### Everest Biotech Ltd

Cherwell Innovation Centre  
77 Heyford Park  
Upper Heyford  
Oxfordshire  
OX25 5HD  
UK

Enquiries:

[info@everestbiotech.com](mailto:info@everestbiotech.com)

Sales:

[sales@everestbiotech.com](mailto:sales@everestbiotech.com)

Tech support:

[support@everestbiotech.com](mailto:support@everestbiotech.com)

Tel: +44 (0)1869 238326

[www.everestbiotech.com](http://www.everestbiotech.com)

**Research Use Only. Not for  
diagnostic or therapeutic use.**

## EB09651 - Goat Anti-ROX / MNT Antibody

Size: 100µg specific antibody in 200µl



### Target Protein

**Principal Names:** MNT, MAX binding protein, MAD6, MXD6, ROX, bHLHd3,  
Max-interacting protein, myc antagonist

**Official Symbol:** MNT

**Accession Number(s):** NP\_064706.1

**Human GeneID(s):** [4335](#)

**Non-Human GeneID(s):** 17428 (mouse), 287521 (rat)

### Immunogen

Peptide with sequence C-DQASTSTASEGEDNI, from the internal region of the protein sequence according to NP\_064706.1.

Please note the [peptide](#) is available for sale.

### Purification and Storage

Purified from goat serum by ammonium sulphate precipitation followed by antigen affinity chromatography using the immunizing peptide.

Supplied at 0.5 mg/ml in Tris saline, 0.02% sodium azide, pH7.3 with 0.5% bovine serum albumin.

Aliquot and store at -20°C. Minimize freezing and thawing.

### Applications Tested

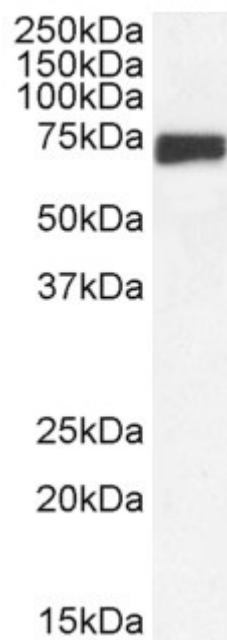
**Peptide ELISA:** antibody detection limit dilution 1:4000.

**Western blot:** Approx 70-75kDa band observed in Mouse Brain lysates (calculated MW of 63.3kDa according to NP\_034943.3). This molecular weight is routinely observed by other sources. Recommended concentration: 0.3-1µg/ml. Primary incubation 1 hour at room temperature.

### Species Reactivity

**Tested:** Mouse

**Expected from sequence similarity:** Human, Mouse, Rat, Dog



EB09651 (1ug/ml) staining of Mouse Brain lysate (35µg protein in RIPA buffer). Detected by chemiluminescence.