

## International Office

### Everest Biotech Ltd

Vector Laboratories, Inc.  
6737 Mowry Ave  
Newark, CA 94560  
United States

Customer Service:

[customerservice@vectorlabs.com](mailto:customerservice@vectorlabs.com)

Technical Service:

[technical@vectorlabs.com](mailto:technical@vectorlabs.com)

Tel: +1 (800) 227-6666

[www.everestbiotech.com](http://www.everestbiotech.com)

**Research Use Only. Not for  
diagnostic or therapeutic use.**

## EB10797 - Goat Anti-MOB2 (aa128-140) Antibody

Size: 100µg specific antibody in 200µl



### Target Protein

**Principal Names:** MOB2, HCCA2, HCCA2 protein, mob2 homolog, mps one binder kinase activator-like 2

**Official Symbol:** MOB2

**Accession Number(s):** NP\_001165694.1; NP\_443731.2

**Human GeneID(s):** [81532](#)

**Non-Human GeneID(s):** 101513 (mouse), 499288 (rat)

**Important Comments:** This antibody is expected to recognize both reported isoforms (NP\_001165694.1; NP\_443731.2) only.

### Immunogen

Peptide with sequence DERGKKVKCTAPQ, from the internal region of the protein sequence according to NP\_001165694.1; NP\_443731.2.

Please note the [peptide](#) is available for sale.

### Purification and Storage

Purified from goat serum by ammonium sulphate precipitation followed by antigen affinity chromatography using the immunizing peptide.

Supplied at 0.5 mg/ml in Tris saline, 0.02% sodium azide, pH7.3 with 0.5% bovine serum albumin.

Aliquot and store at -20°C. Minimize freezing and thawing.

### Applications Tested

**Peptide ELISA:** antibody detection limit dilution 1:128000.

**Western blot:** Approx 30kDa band observed in lysates of cell line Jurkat (calculated MW of 30.2kDa according to NP\_001165694.1). Recommended concentration: 0.02-0.06µg/ml. An additional band of unknown identity was also consistently observed at 48kDa. This band was successfully blocked by incubation with the immunizing peptide.

**IHC:** In paraffin embedded Human Lung shows staining of smooth muscle cells, vasculature and apical secretory granules in the epithelium of the bronchiole. Recommended concentration: 5-10µg/ml.

### Species Reactivity

**Tested:** Human

**Expected from sequence similarity:** Human, Mouse, Rat, Dog, Cow

### Specific Reference

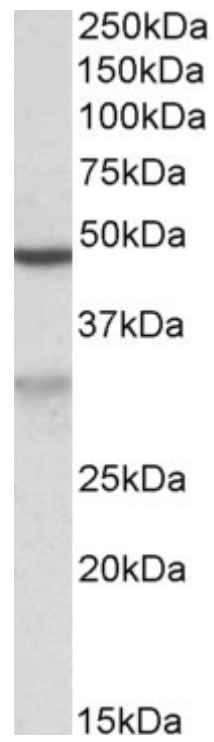
**This antibody has been successfully used in Western blot on Rat:**

Fang KM, Liu YY, Lin CH, Fan SS, Tsai CH, Tzeng SF.

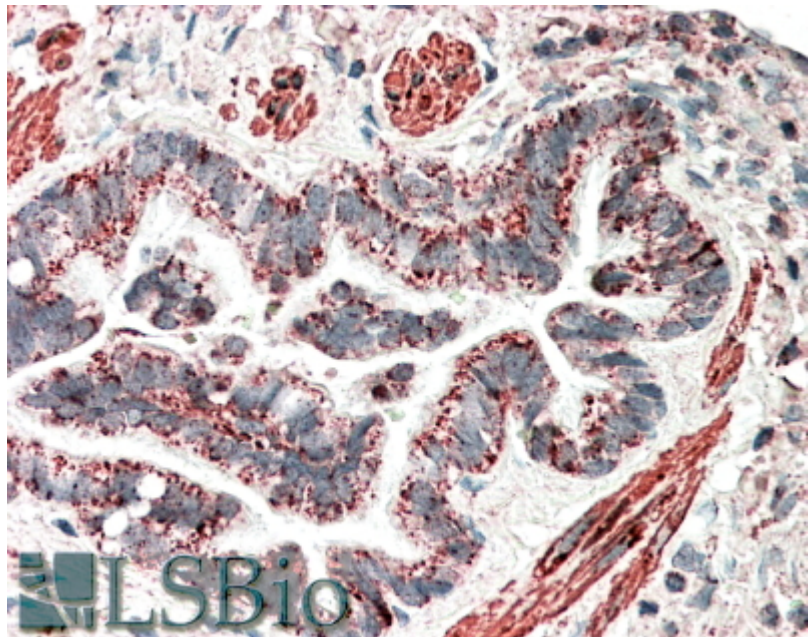
Mps one binder 2 gene upregulation in the stellation of astrocytes induced by cAMP-dependent pathway.

J Cell Biochem. 2012 Sep;113(9):3019-28. doi: 10.1002/jcb.24180.

PMID: 22566124



EB10797 (0.02 $\mu$ g/ml) staining of Jurkat lysate (35 $\mu$ g protein in RIPA buffer). Primary incubation was 1 hour.  
Detected by chemiluminescence.



EB10797 (5 $\mu$ g/ml) staining of paraffin embedded Human Lung. Steamed antigen retrieval with citrate buffer pH 6, AP-staining.