



International Office

Everest Biotech Ltd

Vector Laboratories, Inc.
6737 Mowry Ave
Newark, CA 94560
United States

Customer Service:

customerservice@vectorlabs.com

Technical Service:

technical@vectorlabs.com

Tel: +1 (800) 227-6666

www.everestbiotech.com

**Research Use Only. Not for
diagnostic or therapeutic use.**

EB10798 - Goat Anti-MOBKL3 (aa137-151) Antibody

Size: 100µg specific antibody in 200µl



Target Protein

Principal Names: MOBKL3, MOB1, Mps One Binder kinase activator-like 3 (yeast), 2C4D, MGC12264, MOB1, MOB3, PREI3, class II mMOB1, mob1 homolog 3, phocein, preimplantation protein 3

Official Symbol: MOB4

Accession Number(s): NP_056202.2; NP_955776.1; NP_001094289.1

Human GeneID(s): [25843](#)

Non-Human GeneID(s): 19070 (mouse), 171050 (rat)

Important Comments: This antibody is expected to recognize all three reported isoforms (NP_056202.2; NP_955776.1; NP_001094289.1).

Immunogen

Peptide with sequence C-NSNKYFSPRVSİKES, from the internal region of the protein sequence according to NP_056202.2; NP_955776.1; NP_001094289.1.

Please note the [peptide](#) is available for sale.

Purification and Storage

Purified from goat serum by ammonium sulphate precipitation followed by antigen affinity chromatography using the immunizing peptide.

Supplied at 0.5 mg/ml in Tris saline, 0.02% sodium azide, pH7.3 with 0.5% bovine serum albumin.

Aliquot and store at -20°C. Minimize freezing and thawing.

Applications Tested

Peptide ELISA: antibody detection limit dilution 1:4000.

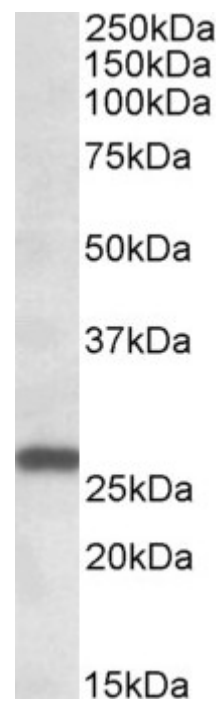
Western blot: Approx 26kDa band observed in Human Brain (Frontal Cortex) and in Mouse and Rat Brain lysates (calculated MW of 26.0kDa according to NP_056202.2). Recommended concentration: 0.3-1µg/ml.

IHC: In paraffin embedded Human Cerebral Cortex shows cytoplasm staining in the neuronal bodies. Recommended concentration, 5-10µg/ml.

Species Reactivity

Tested: Human, Mouse, Rat

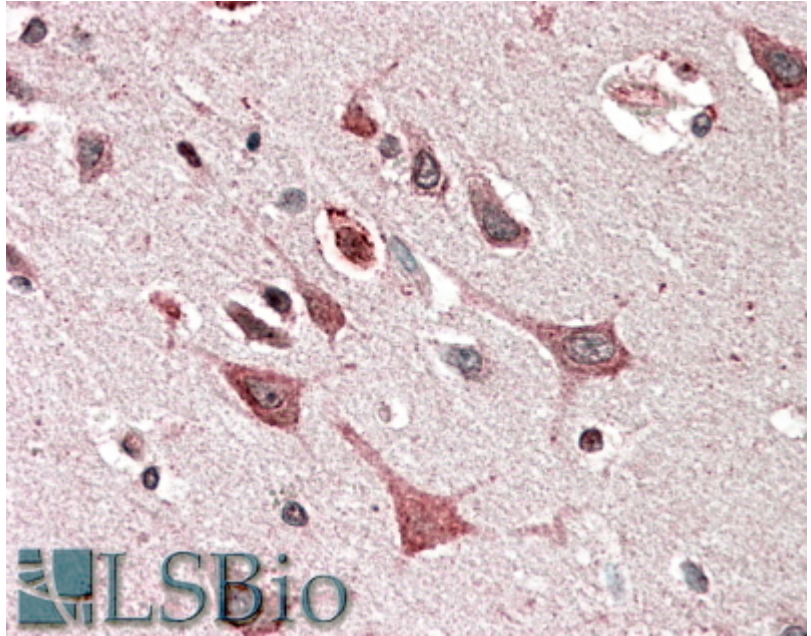
Expected from sequence similarity: Human, Mouse, Rat, Dog, Cow



EB10798 (0.3 μ g/ml) staining of Human Frontal Cortex lysate (35 μ g protein in RIPA buffer). Primary incubation was 1 hour. Detected by chemiluminescence.



EB10798 (0.3 μ g/ml) staining of Mouse Brain lysate (A) and (1 μ g/ml) staining of Rat Brain lysate (B) (35 μ g protein in RIPA buffer). Primary incubation was 1 hour. Detected by chemiluminescence.



EB10798 (5µg/ml) staining of paraffin embedded Human Cerebral Cortex. Steamed antigen retrieval with citrate buffer pH 6, AP-staining.