



International Office

Everest Biotech Ltd

Vector Laboratories, Inc.
6737 Mowry Ave
Newark, CA 94560
United States

Customer Service:

customerservice@vectorlabs.com

Technical Service:

technical@vectorlabs.com

Tel: +1 (800) 227-6666

www.everestbiotech.com

**Research Use Only. Not for
diagnostic or therapeutic use.**

EB06668 - Goat Anti-MOG Antibody

Size: 100µg specific antibody in 200µl



Target Protein

Principal Names: MOG, MGC26137, myelin oligodendrocyte glycoprotein, DAQB-92E24.2, MOGIG-2, MOG Ig-AluB, MOG alpha-6

Official Symbol: MOG

Accession Number(s): NP_996532.2; NP_996535.2; NP_001008229.1

Human GeneID(s): [4340](#)

Important Comments: This antibody is expected to recognise NP_996532.2 (isf a1), NP_996535.2 (isf a2) and NP_001008229.1 (isf a3)

Immunogen

Peptide with sequence C-AGQFLEELRNPF, from the C Terminus of the protein sequence according to NP_996532.2; NP_996535.2; NP_001008229.1.

Please note the [peptide](#) is available for sale.

Purification and Storage

Purified from goat serum by ammonium sulphate precipitation followed by antigen affinity chromatography using the immunizing peptide.

Supplied at 0.5 mg/ml in Tris saline, 0.02% sodium azide, pH7.3 with 0.5% bovine serum albumin.

Aliquot and store at -20°C. Minimize freezing and thawing.

Applications Tested

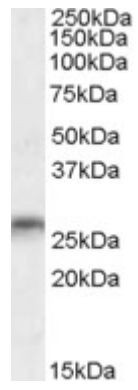
Peptide ELISA: antibody detection limit dilution 1:16000.

Western blot: Western Blot: Approx 26kDa band observed in Human Brain lysates (calculated MW of 25.4kDa according to NP_001008229.1). Recommended concentration: 0.03-0.1µg/ml. Primary incubation was for 1 hour.

Species Reactivity

Tested: Human

Expected from sequence similarity: Human, Mouse, Rat, Pig, Cow



EB06668 (0.03 μ g/ml) staining of Human Amygdala lysate (35 μ g protein in RIPA buffer). Detected by chemiluminescence.