



UK Office

Everest Biotech Ltd

Cherwell Innovation Centre
77 Heyford Park
Upper Heyford
Oxfordshire
OX25 5HD
UK

Enquiries:

info@everestbiotech.com

Sales:

sales@everestbiotech.com

Tech support:

support@everestbiotech.com

Tel: +44 (0)1869 238326

www.everestbiotech.com

**Research Use Only. Not for
diagnostic or therapeutic use.**

EB09837 - Goat Anti-MON1A (aa589-601) Antibody

Size: 100µg specific antibody in 200µl

Target Protein

Principal Names: FLJ97088, MGC13272, MON1 homolog A, MON1 homolog A (yeast), SAND1, MON1A

Official Symbol: MON1A

Accession Number(s): NP_115731.2; NP_001135973.1

Human GeneID(s): [84315](#)

Non-Human GeneID(s): 72825 (mouse), 315999 (rat)

Important Comments: This antibody is expected to recognize isoforms a and b (NP_115731.2; NP_001135973.1). Amino acid numbering in name refers to sequence NP_115731.2.

Immunogen

Peptide with sequence C-RPLKTIYYTGPNE, from the internal region of the protein sequence according to NP_115731.2; NP_001135973.1.

Please note the [peptide](#) is available for sale.

Purification and Storage

Purified from goat serum by ammonium sulphate precipitation followed by antigen affinity chromatography using the immunizing peptide.

Supplied at 0.5 mg/ml in Tris saline, 0.02% sodium azide, pH7.3 with 0.5% bovine serum albumin.

Aliquot and store at -20°C. Minimize freezing and thawing.

Applications Tested

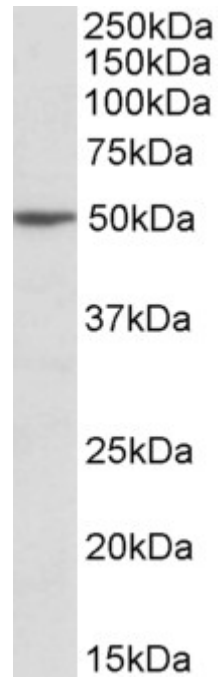
Peptide ELISA: antibody detection limit dilution 1:8000.

Western blot: Approx 50kDa band observed in lysates of cell line Jurkat (calculated MW of 55.5kDa according to NP_001135973.1). Recommended concentration: 1-3µg/ml.

Species Reactivity

Tested: Human

Expected from sequence similarity: Human, Mouse, Rat, Dog, Cow



EB09837 (2 μ g/ml) staining of Jurkat lysate (35 μ g protein in RIPA buffer). Primary incubation was 1 hour.
Detected by chemiluminescence.