



## International Office

### Everest Biotech Ltd

Vector Laboratories, Inc.  
6737 Mowry Ave  
Newark, CA 94560  
United States

Customer Service:

[customerservice@vectorlabs.com](mailto:customerservice@vectorlabs.com)

Technical Service:

[technical@vectorlabs.com](mailto:technical@vectorlabs.com)

Tel: +1 (800) 227-6666

[www.everestbiotech.com](http://www.everestbiotech.com)

**Research Use Only. Not for  
diagnostic or therapeutic use.**

## EB08850 - Goat Anti-Monoglyceride Lipase Antibody

Size: 100µg specific antibody in 200µl



### Target Protein

**Principal Names:** monoglyceride lipase, HU-K5, MGLL, MGL, lysophospholipase-like

**Official Symbol:** MGLL

**Accession Number(s):** NP\_009214.1; NP\_001003794.1

**Human GeneID(s):** [11343](#)

**Non-Human GeneID(s):** 23945 (mouse), 29254 (rat)

**Important Comments:** This antibody is expected to recognize both reported isoforms (NP\_009214.1; NP\_001003794.1).

### Immunogen

Peptide with sequence C-QDPLHLVNADGQY, from the internal region (near N Terminus) of the protein sequence according to NP\_009214.1; NP\_001003794.1.

Please note the [peptide](#) is available for sale.

### Purification and Storage

Purified from goat serum by ammonium sulphate precipitation followed by antigen affinity chromatography using the immunizing peptide.

Supplied at 0.5 mg/ml in Tris saline, 0.02% sodium azide, pH7.3 with 0.5% bovine serum albumin.

Aliquot and store at -20°C. Minimize freezing and thawing.

### Applications Tested

**Peptide ELISA:** antibody detection limit dilution 1:128000.

**Western blot:** Approx 35kDa band observed in Mouse Adipose lysates and in preliminary testing of Human, Cerebellum lysate and in lysate of cell line NIH3T3 (calculated MW of 33.3kDa according to NP\_001003794.1). Recommended concentration: 0.3-1µg/ml.

Primary incubation 1 hour at room temperature. Preliminary testing was unsuccessful on Rat for this particular batch.

**IHC:** In paraffin embedded Human Liver, expression of MGLL is detected in hepatocytes. Recommended concentration: 5µg/ml.

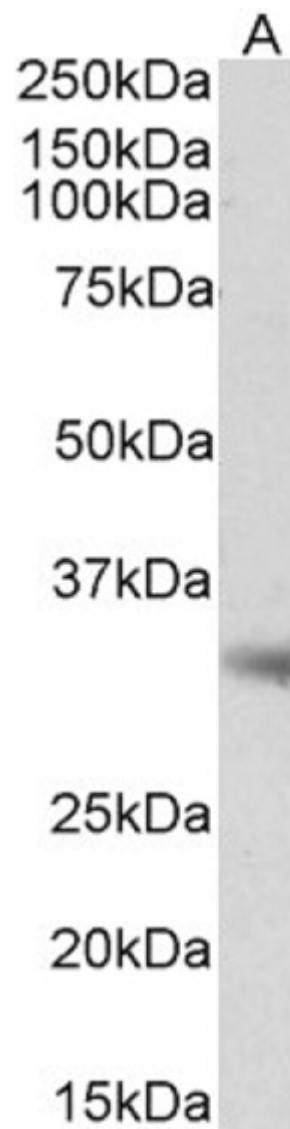
**Immunofluorescence:** Strong expression of the protein seen in the cytoplasm of U2OS and A431 cells. Recommended concentration: 10µg/ml.

**Flow Cytometry:** Flow cytometric analysis of A431 cells. Recommended concentration: 10ug/ml.

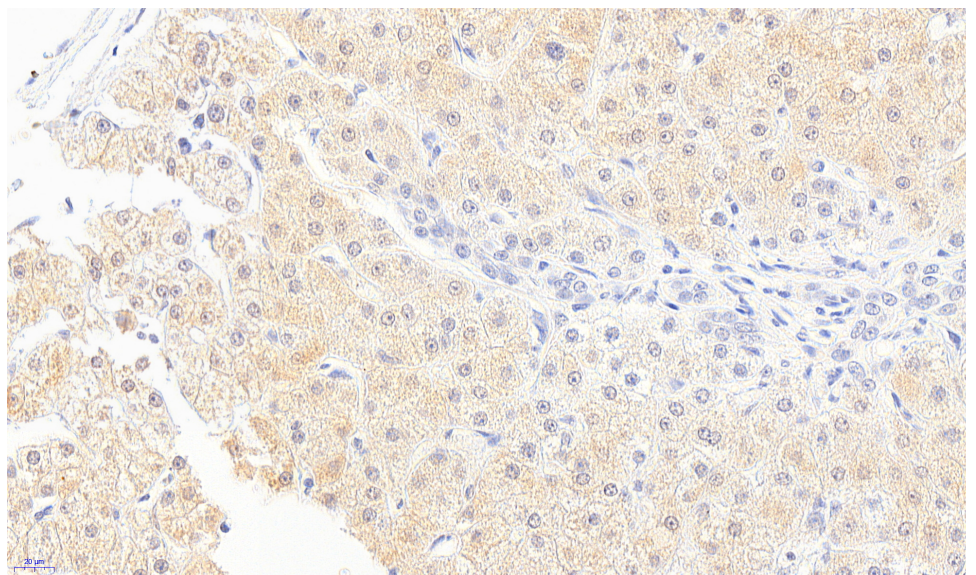
### Species Reactivity

**Tested:** Human, Mouse

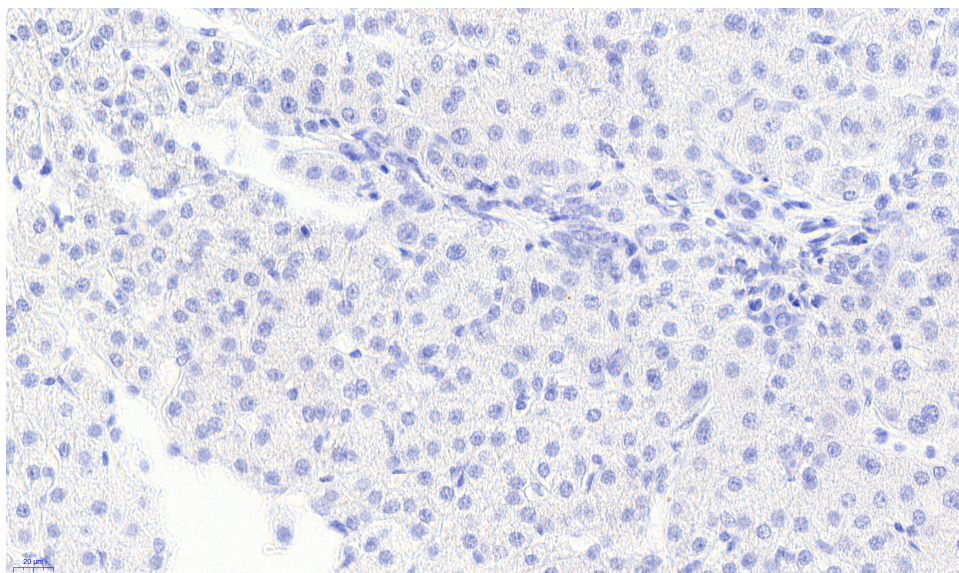
**Expected from sequence similarity:** Human, Mouse, Rat, Dog, Cow



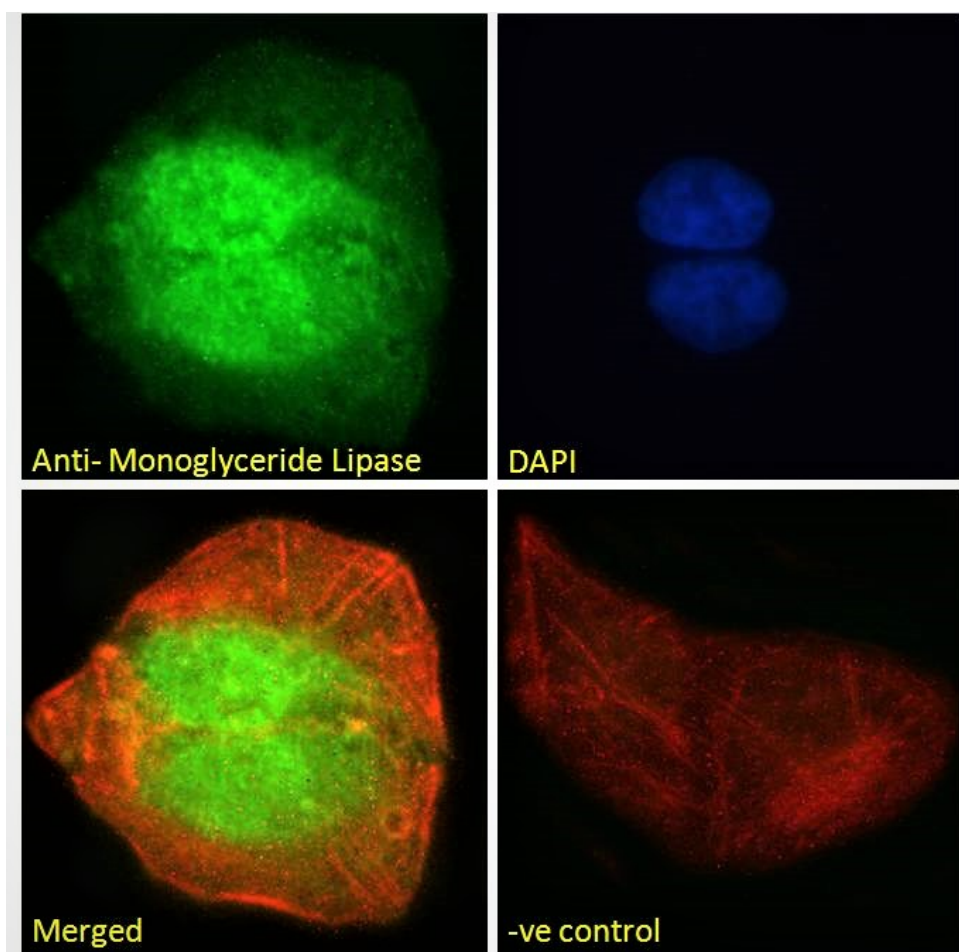
EB08850 (0.5 $\mu$ g/ml) staining of Mouse Adipose lysate (35 $\mu$ g protein in RIPA buffer). Detected by chemiluminescence.



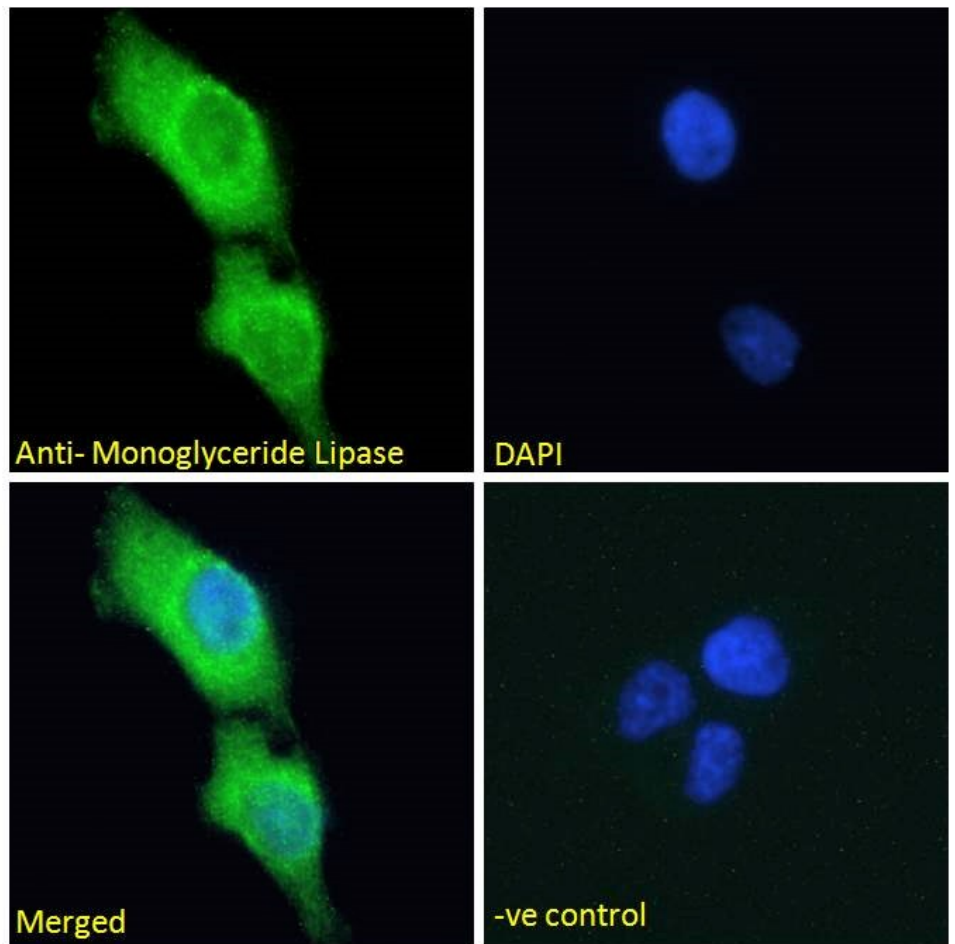
EB08850 (5 $\mu$ g/ml) staining of paraffin embedded Human Liver. Heat induced antigen retrieval with citrate buffer pH 6, HRP-staining.



EB08850 Negative Control showing staining of paraffin embedded Human Liver, with no primary antibody.

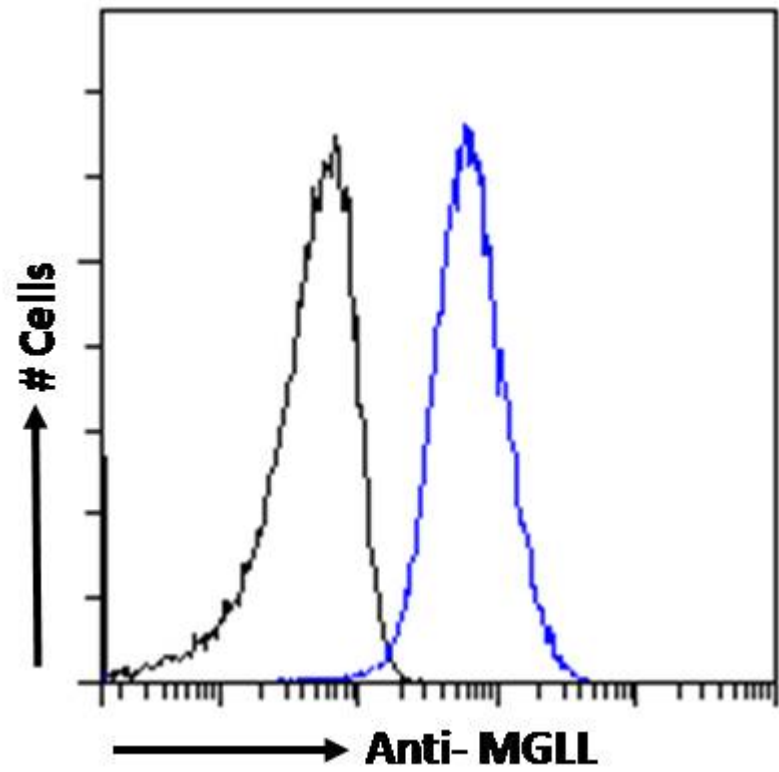


EB08850 Immunofluorescence analysis of paraformaldehyde fixed U2OS cells, permeabilized with 0.15% Triton. Primary incubation 1hr (10ug/ml) followed by Alexa Fluor 488 secondary antibody (2ug/ml), showing nuclear and cytoplasmic staining. Actin filaments were stained with phalloidin (red) and the nuclear stain is DAPI (blue). Negative control: Unimmunized goat IgG (10ug/ml) followed by Alexa Fluor 488 secondary antibody (2ug/ml).



EB08850 Immunofluorescence analysis of paraformaldehyde fixed A431 cells, permeabilized with 0.15% Triton. Primary incubation 1hr (10ug/ml) followed by Alexa Fluor 488 secondary antibody (2ug/ml), showing cytoplasmic and endoplasmic reticulum staining. The nuclear stain is DAPI (blue). Negative control: Unimmunized goat IgG (10ug/ml) followed by Alexa Fluor 488 secondary antibody (2ug/ml).





EB08850 Flow cytometric analysis of paraformaldehyde fixed A431 cells (blue line), permeabilized with 0.5% Triton. Primary incubation 1hr (10ug/ml) followed by Alexa Fluor 488 secondary antibody (1ug/ml). IgG control: Unimmunized goat IgG (black line) followed by Alexa Fluor 488 secondary antibody.