



UK Office

Everest Biotech Ltd

Cherwell Innovation Centre
77 Heyford Park
Upper Heyford
Oxfordshire
OX25 5HD
UK

Enquiries:

info@everestbiotech.com

Sales:

sales@everestbiotech.com

Tech support:

support@everestbiotech.com

Tel: +44 (0)1869 238326

Fax: +44 (0)1869 238327

US Office

Everest Biotech c/o Abcore

405 Maple Street, Suite A106
Ramona,
CA 92065
USA

Inquiries:

info@everestbiotech.com

Sales:

usasales@everestbiotech.com

Tech support:

support@everestbiotech.com

Tel: 888-320-4628 (toll-free)

Fax: 888-841-9041

www.everestbiotech.com

**Research Use Only. Not for
diagnostic or therapeutic use.**

EB09422 - Goat Anti-MOZ / KAT6A Antibody

Size: 100µg specific antibody in 200µl



Target Protein

Principal Names: MYST3, MYST histone acetyltransferase (monocytic leukemia) 3, KAT6A, MGC167033, MOZ, RUNXBP2, ZNF220, Monocytic leukemia zinc finger protein, runt-related transcription factor binding protein 2, zinc finger protein 220

Official Symbol: KAT6A

Accession Number(s): NP_006757.2

Human GeneID(s): [7994](#)

Important Comments: Reported variants NP_001092882.1, NP_006757.2, NP_001092883.1 represent identical protein.

Immunogen

Peptide with sequence C-EKIKDKEETELD, from the Internal region of the protein sequence according to NP_006757.2.

Please note the [peptide](#) is available for sale.

Purification and Storage

Purified from goat serum by ammonium sulphate precipitation followed by antigen affinity chromatography using the immunizing peptide.

Supplied at 0.5 mg/ml in Tris saline, 0.02% sodium azide, pH7.3 with 0.5% bovine serum albumin.

Aliquot and store at -20°C. Minimize freezing and thawing.

Applications Tested

Peptide ELISA: antibody detection limit dilution 1:16000.

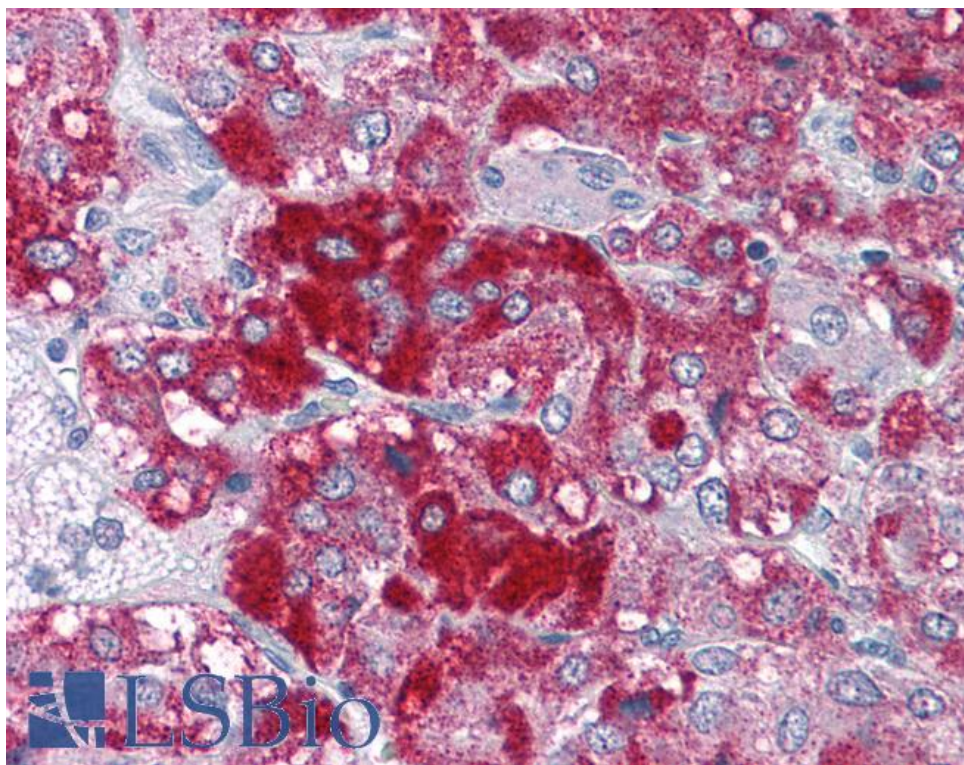
Western blot: Preliminary experiments in lysates of cell line U937 gave no specific signal but low background (at antibody concentration up to 1µg/ml).

IHC: Paraffin embedded Human Adrenal Gland. Recommended concentration: 3.75µg/ml.

Species Reactivity

Tested: Human

Expected from sequence similarity: Human



EB09422 (3.75µg/ml) staining of paraffin embedded Human Adrenal Gland. Steamed antigen retrieval with citrate buffer pH 6, AP-staining.