



UK Office

Everest Biotech Ltd

Cherwell Innovation Centre
77 Heyford Park
Upper Heyford
Oxfordshire
OX25 5HD
UK

Enquiries:

info@everestbiotech.com

Sales:

sales@everestbiotech.com

Tech support:

support@everestbiotech.com

Tel: +44 (0)1869 238326

Fax: +44 (0)1869 238327

US Office

Everest Biotech c/o Abcore

405 Maple Street, Suite A106
Ramona,
CA 92065
USA

Inquiries:

info@everestbiotech.com

Sales:

usasales@everestbiotech.com

Tech support:

support@everestbiotech.com

Tel: 888-320-4628 (toll-free)

Fax: 888-841-9041

www.everestbiotech.com

**Research Use Only. Not for
diagnostic or therapeutic use.**

EB06330 - Goat Anti-MPG Antibody

Size: 100µg specific antibody in 200µl



Target Protein

Principal Names: N-methylpurine-DNA glycosylase, AAG, APNG, CRA36.1, MDG, Mid1, N-methylpurine-DNA glycosylase, MPG, PIG11, PIG16, anpg, 3'1 end of the Mid1 gene, localized 68 kb upstream the human zeta globin gene on 16p, CRA36.1 (3-methyl-adenine DNA glycosylase), alkyladenine DNA glycosylase, proliferation-inducing protein 11, proliferation-inducing protein 16

Official Symbol: MPG

Accession Number(s): NP_002425.2; NP_001015052.1; NP_001015054.1

Human GeneID(s): [4350](#)

Important Comments: This antibody is expected to recognize all three reported isoforms (NP_002425.2, NP_001015052.1 and NP_001015054.1)

Immunogen

Peptide with sequence C-SVVDRVAEQDTQA, from the C Terminus of the protein sequence according to NP_002425.2; NP_001015052.1; NP_001015054.1.

Please note the [peptide](#) is available for sale.

Purification and Storage

Purified from goat serum by ammonium sulphate precipitation followed by antigen affinity chromatography using the immunizing peptide.

Supplied at 0.5 mg/ml in Tris saline, 0.02% sodium azide, pH7.3 with 0.5% bovine serum albumin.

Aliquot and store at -20°C. Minimize freezing and thawing.

Applications Tested

Peptide ELISA: antibody detection limit dilution 1:1000.

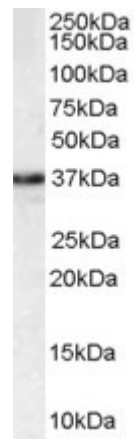
Western blot: Approx 37kDa band observed in lysates of HEK293 and K562 (calculated MW of 32.9kDa according to NP_002425.2). Recommended concentration: 1-3µg/ml. Primary incubated for 1 hour.

IHC: Paraffin embedded Human Uterus. Recommended concentration: 5µg/ml.

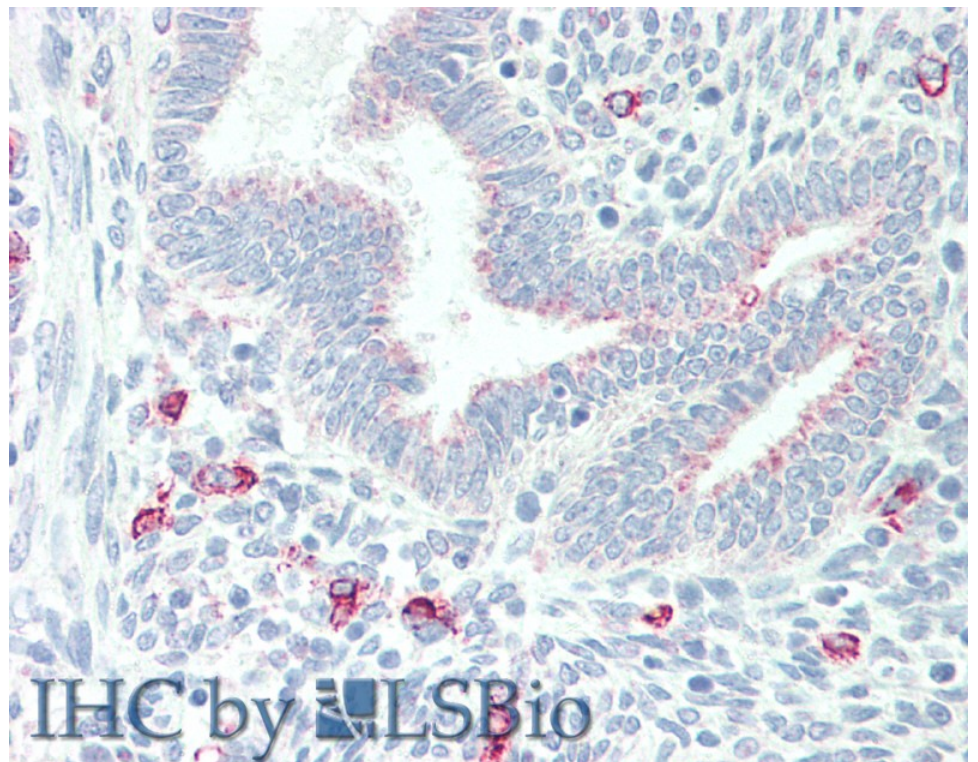
Species Reactivity

Tested: Human

Expected from sequence similarity: Human



EB06330 staining (1 μ g/ml) of HEK293 lysate (RIPA buffer, 35 μ g total protein per lane). Detected by chemiluminescence.



EB06330 (5 μ g/ml) staining of paraffin embedded Human Uterus. Steamed antigen retrieval with citrate buffer pH 6, AP-staining.