



UK Office

Everest Biotech Ltd

Cherwell Innovation Centre
77 Heyford Park
Upper Heyford
Oxfordshire
OX25 5HD
UK

Enquiries:

info@everestbiotech.com

Sales:

sales@everestbiotech.com

Tech support:

support@everestbiotech.com

Tel: +44 (0)1869 238326

www.everestbiotech.com

**Research Use Only. Not for
diagnostic or therapeutic use.**

EB10432 - Goat Anti-MPV17 Antibody

Size: 100µg specific antibody in 200µl



Target Protein

Principal Names: Mpv17 mitochondrial inner membrane protein, Mpv17 protein, Mpv17, human homolog of glomerulosclerosis and nephrotic syndrome, OTTHUMP00000122591, SYM1, MPV17

Official Symbol: MPV17

Accession Number(s): NP_002428.1

Human GeneID(s): [4358](#)

Non-Human GeneID(s): 17527 (mouse), 360463 (rat)

Immunogen

Peptide with sequence C-QRALAAHPWKVQ, from the internal region of the protein sequence according to NP_002428.1.

Please note the [peptide](#) is available for sale.

Purification and Storage

Purified from goat serum by ammonium sulphate precipitation followed by antigen affinity chromatography using the immunizing peptide.

Supplied at 0.5 mg/ml in Tris saline, 0.02% sodium azide, pH7.3 with 0.5% bovine serum albumin.

Aliquot and store at -20°C. Minimize freezing and thawing.

Applications Tested

Peptide ELISA: antibody detection limit dilution 1:32000.

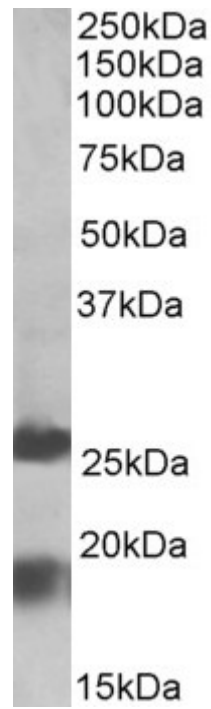
Western blot: Approx 19kDa band observed in Human Brain (Frontal Cortex) lysates (calculated MW of 19.7kDa according to NP_002428.1). Recommended concentration: 1-3µg/ml. An additional band of unknown identity was also consistently observed at 26kDa. This band was successfully blocked by incubation with the immunizing peptide. We would appreciate any feedback from people in the field - have any such results been reported with other antibodies/lysates? Have any further splice variants/modified forms been reported?

IHC: In paraffin embedded Human Liver shows heavy textured cytoplasm staining in hepatocytes, consistent with mitochondria.. Recommended concentration, 5-10µg/ml.

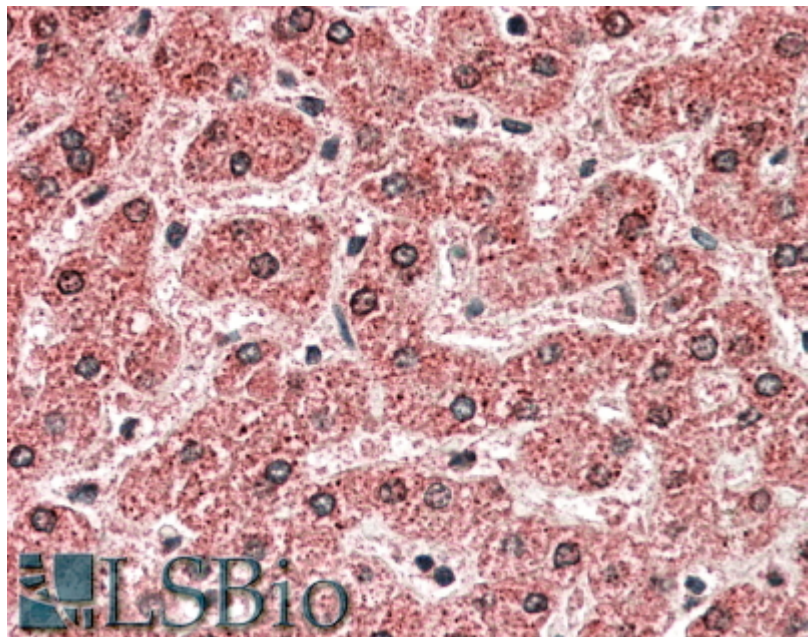
Species Reactivity

Tested: Human

Expected from sequence similarity: Human, Mouse, Rat, Dog, Cow



EB10432 (2 μ g/ml) staining of Human Frontal Cortex lysate (35 μ g protein in RIPA buffer). Primary incubation was 1 hour. Detected by chemiluminescence.



EB10432 (5 μ g/ml) staining of paraffin embedded Human Liver. Steamed antigen retrieval with citrate buffer pH 6, AP-staining.