



UK Office

Everest Biotech Ltd

Cherwell Innovation Centre
77 Heyford Park
Upper Heyford
Oxfordshire
OX25 5HD
UK

Enquiries:

info@everestbiotech.com

Sales:

sales@everestbiotech.com

Tech support:

support@everestbiotech.com

Tel: +44 (0)1869 238326

www.everestbiotech.com

**Research Use Only. Not for
diagnostic or therapeutic use.**

EB11818 - Goat Anti-MRG/MORF4L binding protein Antibody

Size: 100µg specific antibody in 200µl



Target Protein

Principal Names: C20orf20, chromosome 20 open reading frame 20, Eaf7, FLJ10914, MRG(MORF4-related gene)-binding protein, MRG15BP, MRG-binding protein, MRGBP, OTTHUMP00000031512, URCC4, MRG/MORF4L binding protein

Official Symbol: MRGBP

Accession Number(s): NP_060740.1

Human GeneID(s): [55257](#)

Non-Human GeneID(s): 73247 (mouse), 311713 (rat)

Immunogen

Peptide with sequence CIRDKFSQNIQRQVP, from the internal region of the protein sequence according to NP_060740.1.

Please note the [peptide](#) is available for sale.

Purification and Storage

Purified from goat serum by ammonium sulphate precipitation followed by antigen affinity chromatography using the immunizing peptide.

Supplied at 0.5 mg/ml in Tris saline, 0.02% sodium azide, pH7.3 with 0.5% bovine serum albumin.

Aliquot and store at -20°C. Minimize freezing and thawing.

Applications Tested

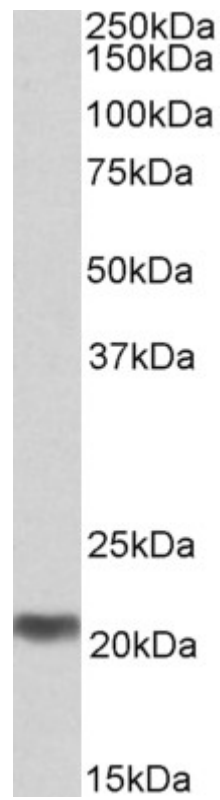
Peptide ELISA: antibody detection limit dilution 1:32000.

Western blot: Approx 21kDa band observed in Human Testis lysates (calculated MW of 22.4kDa according to NP_060740.1). Recommended concentration: 0.3-1µg/ml.

Species Reactivity

Tested: Human

Expected from sequence similarity: Human, Mouse, Rat, Cow



EB11818 (0.3 μ g/ml) staining of Human Testis lysate (35 μ g protein in RIPA buffer). Primary incubation was 1 hour. Detected by chemiluminescence.