



UK Office

Everest Biotech Ltd

Cherwell Innovation Centre
77 Heyford Park
Upper Heyford
Oxfordshire
OX25 5HD
UK

Enquiries:

info@everestbiotech.com

Sales:

sales@everestbiotech.com

Tech support:

support@everestbiotech.com

Tel: +44 (0)1869 238326

www.everestbiotech.com

**Research Use Only. Not for
diagnostic or therapeutic use.**

EB08705 - Goat Anti-MRP8 / ABCC11 Antibody

Size: 100µg specific antibody in 200µl



Target Protein

Principal Names: ABCC11, ATP-binding cassette transporter MRP8, ATP-binding cassette, sub-family C (CFTR/MRP), member 11, EWWD, MRP8, WW, ATP-binding cassette protein C11, ATP-binding cassette, sub-family C, member 11, multi-resistance protein 8

Official Symbol: ABCC11

Accession Number(s): NP_115972.2; NP_660187.1; NP_001357425.1

Human GeneID(s): [85320](#)

Immunogen

Peptide with sequence C-KVVEFDRPEVLRK, from the internal region (near C Terminus) of the protein sequence according to NP_115972.2; NP_660187.1; NP_001357425.1.

Please note the [peptide](#) is available for sale.

Purification and Storage

Purified from goat serum by ammonium sulphate precipitation followed by antigen affinity chromatography using the immunizing peptide.

Supplied at 0.5 mg/ml in Tris saline, 0.02% sodium azide, pH7.3 with 0.5% bovine serum albumin.

Aliquot and store at -20°C. Minimize freezing and thawing.

Applications Tested

Peptide ELISA: antibody detection limit dilution 1:32000.

Western blot: Approx 125kDa band observed in Human Testis lysates and in preliminary testing of Breast lysate (calculated MW of 150kDa according to NP_660187.1). This molecular weight is routinely observed by other sources. Recommended concentration: 0.5-1.5µg/ml. Primary incubation 1 hour at room temperature.

IHC: Paraffin embedded Human Breast. Recommended concentration: 3.75µg/ml.

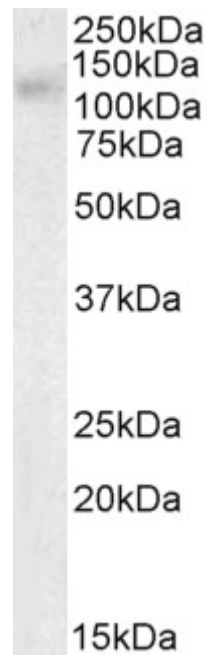
Immunofluorescence: Strong expression of the protein seen in the membranes and cytoplasm of HeLa cells. Recommended concentration: 10µg/ml.

Flow Cytometry: Flow cytometric analysis of HeLa cells. Recommended concentration: 10µg/ml.

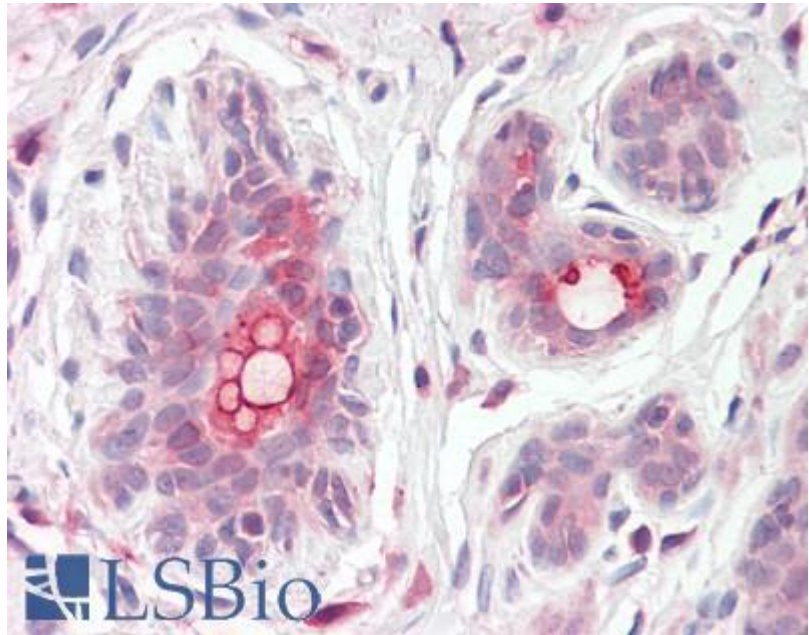
Species Reactivity

Tested: Human

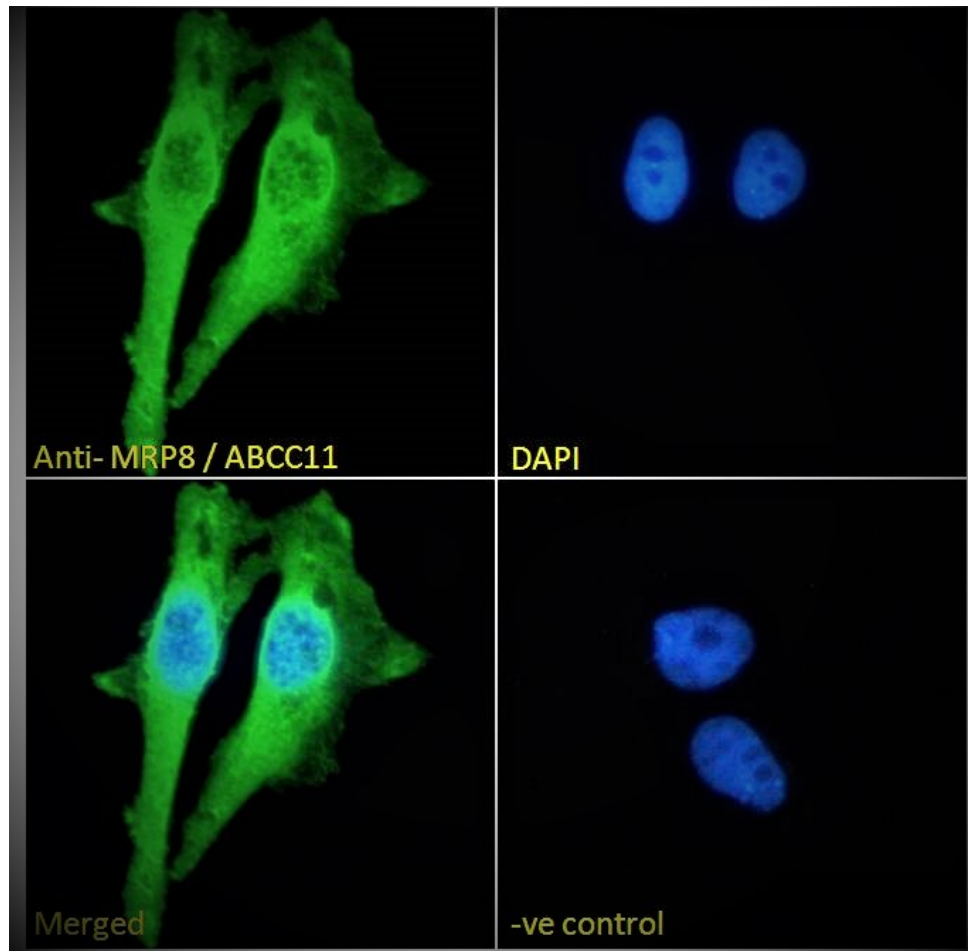
Expected from sequence similarity: Human



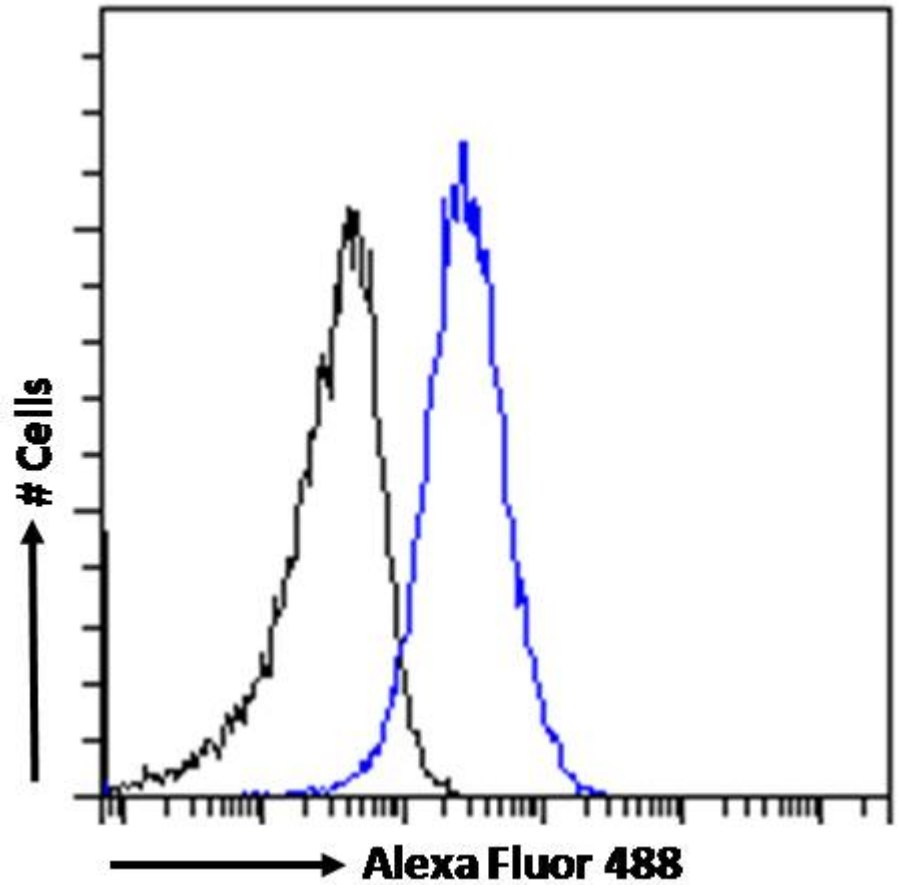
EB08705 (0.5 μ g/ml) staining of Human Testes lysate (35 μ g protein in RIPA buffer). Detected by chemiluminescence.



EB08705 (3.75 μ g/ml) staining of paraffin embedded Human Breast. Steamed antigen retrieval with citrate buffer pH 6, AP-staining.



EB08705 Immunofluorescence analysis of paraformaldehyde fixed HeLa cells, permeabilized with 0.15% Triton. Primary incubation 1hr (10ug/ml) followed by Alexa Fluor 488 secondary antibody (2ug/ml), showing membrane and cytoplasmic staining. The nuclear stain is DAPI (blue). Negative control: Unimmunized goat IgG (10ug/ml) followed by Alexa Fluor 488 secondary antibody (2ug/ml).



EB08705 Flow cytometric analysis of paraformaldehyde fixed HeLa cells (blue line), permeabilized with 0.5% Triton. Primary incubation 1hr (10ug/ml) followed by Alexa Fluor 488 secondary antibody (1ug/ml). IgG control: Unimmunized goat IgG (black line) followed by Alexa Fluor 488 secondary antibody.