



International Office

Everest Biotech Ltd

Vector Laboratories, Inc.
6737 Mowry Ave
Newark, CA 94560
United States

Customer Service:

customerservice@vectorlabs.com

Technical Service:

technical@vectorlabs.com

Tel: +1 (800) 227-6666

www.everestbiotech.com

**Research Use Only. Not for
diagnostic or therapeutic use.**

EB05689 - Goat Anti-MRPL3 Antibody

Size: 100µg specific antibody in 200µl



Target Protein

Principal Names: MRPL3, mitochondrial ribosomal protein L3, MRL3, RPML3, ribosomal protein, mitochondrial, L3, mitochondrial 60S ribosomal protein L3

Official Symbol: MRPL3

Accession Number(s): NP_009139.1

Human GeneID(s): [11222](#)

Immunogen

Peptide with sequence NVCQPGAPSITFA, from the C Terminus of the protein sequence according to NP_009139.1.

Please note the [peptide](#) is available for sale.

Purification and Storage

Purified from goat serum by ammonium sulphate precipitation followed by antigen affinity chromatography using the immunizing peptide.

Supplied at 0.5 mg/ml in Tris saline, 0.02% sodium azide, pH7.3 with 0.5% bovine serum albumin.

Aliquot and store at -20°C. Minimize freezing and thawing.

Applications Tested

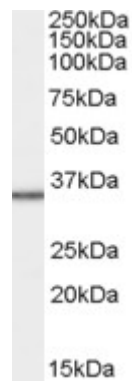
Peptide ELISA: antibody detection limit dilution 1:32000.

Western blot: Approx 35kDa band observed in lysates of cell line HepG2 (calculated MW of 38.6kDa according to NP_009139.1). Recommended concentration: 1-3µg/ml.

Species Reactivity

Tested: Human

Expected from sequence similarity: Human, Pig, Cow



EB05689 staining (1µg/ml) of HepG2 cell lysate (RIPA buffer, 35µg total protein per lane). Primary incubated for 1 hour. Detected by western blot using chemiluminescence.