



## UK Office

### Everest Biotech Ltd

Cherwell Innovation Centre  
77 Heyford Park  
Upper Heyford  
Oxfordshire  
OX25 5HD  
UK

Enquiries:

[info@everestbiotech.com](mailto:info@everestbiotech.com)

Sales:

[sales@everestbiotech.com](mailto:sales@everestbiotech.com)

Tech support:

[support@everestbiotech.com](mailto:support@everestbiotech.com)

Tel: +44 (0)1869 238326

[www.everestbiotech.com](http://www.everestbiotech.com)

**Research Use Only. Not for  
diagnostic or therapeutic use.**

## EB12530 - Goat Anti-MSI2 / musashi-2 Antibody

Size: 100µg specific antibody in 200µl



### Target Protein

**Principal Names:** MSI2, musashi RNA-binding protein 2, MSI2H, RNA-binding protein  
Musashi homolog 2, musashi homolog 2, musashi-2

**Official Symbol:** MSI2

**Accession Number(s):** NP\_620412.1

**Human GeneID(s):** [124540](#)

**Non-Human GeneID(s):** 76626 (mouse)

**Important Comments:** This antibody is expected to recognize isoform a (NP\_620412.1) only.

### Immunogen

Peptide with sequence QGTSGSANDSQHD-C, from the N Terminus of the protein sequence according to NP\_620412.1.

Please note the [peptide](#) is available for sale.

### Purification and Storage

Purified from goat serum by ammonium sulphate precipitation followed by antigen affinity chromatography using the immunizing peptide.

Supplied at 0.5 mg/ml in Tris saline, 0.02% sodium azide, pH7.3 with 0.5% bovine serum albumin.

Aliquot and store at -20°C. Minimize freezing and thawing.

### Applications Tested

**Peptide ELISA:** antibody detection limit dilution 1:128000.

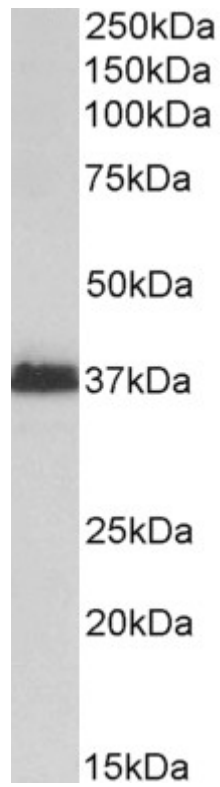
**Western blot:** Approx 37kDa band observed in lysates of cell line Kelly (calculated MW of 35.2kDa according to NP\_620412.1). Approx 35+37kDa bands observed in fetal Mouse Brain lysates (calculated MW of 36.9kDa according to NP\_473384.1 ). Recommended concentration: 1-3µg/ml. Primary incubation was 1 hour.

**IHC:** Paraffin embedded Human Liver. Recommended concentration: 5µg/ml.

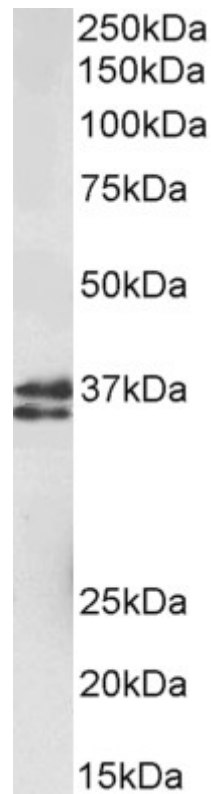
### Species Reactivity

**Tested:** Human, Mouse

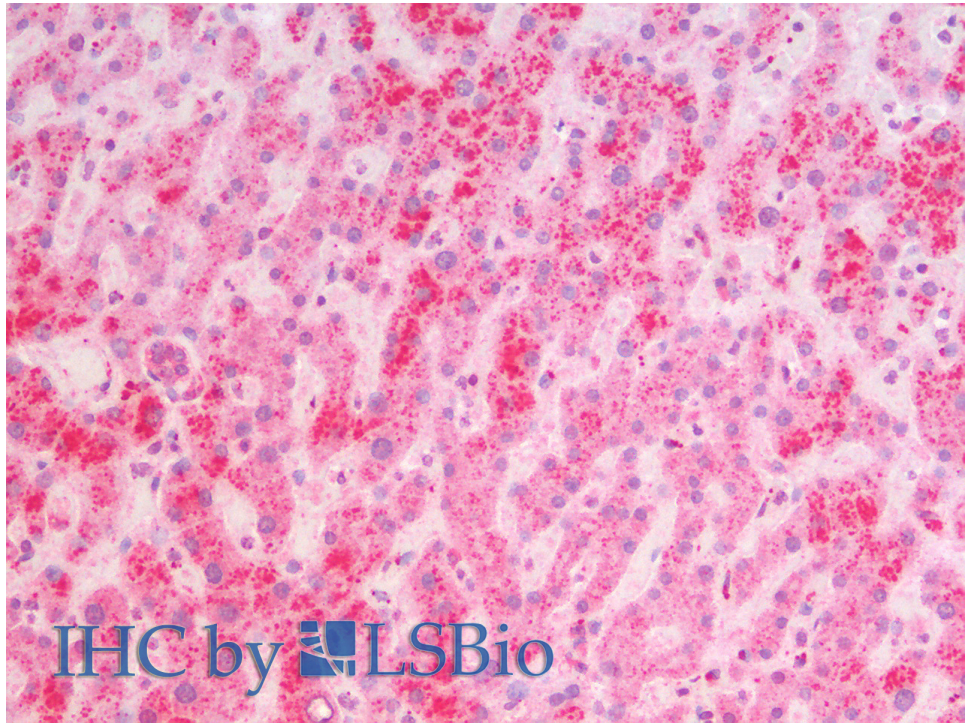
**Expected from sequence similarity:** Human, Mouse, Dog



EB12530 (2 $\mu$ g/ml) staining of Kelly lysate (35 $\mu$ g protein in RIPA buffer). Detected by chemiluminescence.



EB12530 (1 $\mu$ g/ml) staining of fetal Mouse Brain lysate (35 $\mu$ g protein in RIPA buffer). Detected by chemiluminescence.



EB12530 (5µg/ml) staining of paraffin embedded Human Liver. Steamed antigen retrieval with citrate buffer pH 6, AP-staining.