



UK Office

Everest Biotech Ltd

Cherwell Innovation Centre
77 Heyford Park
Upper Heyford
Oxfordshire
OX25 5HD
UK

Enquiries:

info@everestbiotech.com

Sales:

sales@everestbiotech.com

Tech support:

support@everestbiotech.com

Tel: +44 (0)1869 238326

www.everestbiotech.com

**Research Use Only. Not for
diagnostic or therapeutic use.**

EB05163 - Goat Anti-MTA1 Antibody

Size: 100µg specific antibody in 200µl



Target Protein

Principal Names: MTA1, metastasis associated 1, metastasis associated gene 1, metastasis associated gene 1 protein, metastasis associated protein

Official Symbol: MTA1

Accession Number(s): AAA78935.1

Human GeneID(s): [9112](#)

Important Comments: Immunizing peptide was designed based on NP_004680.1. The version changed to NP_004680.2 and no longer matches with the peptide.

Immunogen

Peptide with sequence C-PGDVIFYMPKE, from the internal region (near the C Terminus) of the protein sequence according to AAA78935.1.

Please note the [peptide](#) is available for sale.

Purification and Storage

Purified from goat serum by ammonium sulphate precipitation followed by antigen affinity chromatography using the immunizing peptide.

Supplied at 0.5 mg/ml in Tris saline, 0.02% sodium azide, pH7.3 with 0.5% bovine serum albumin.

Aliquot and store at -20°C. Minimize freezing and thawing.

Applications Tested

Peptide ELISA: antibody detection limit dilution 1:16000.

Western blot: Approx 75kDa band observed in Human Placenta lysates (calculated MW of 80.8kDa according to NP_004680.1). Recommended concentration: 0.03-0.1µg/ml.

IHC: Paraffin embedded Human Testis and Adrenal Gland. Recommended concentration: 3.75µg/ml.

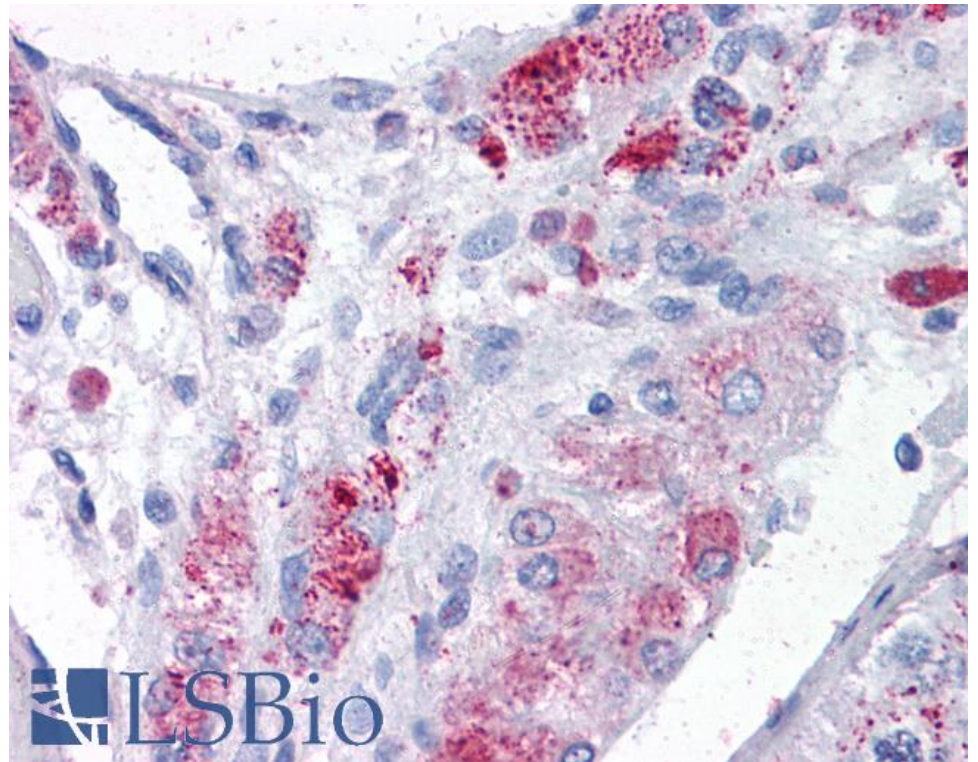
Species Reactivity

Tested: Human

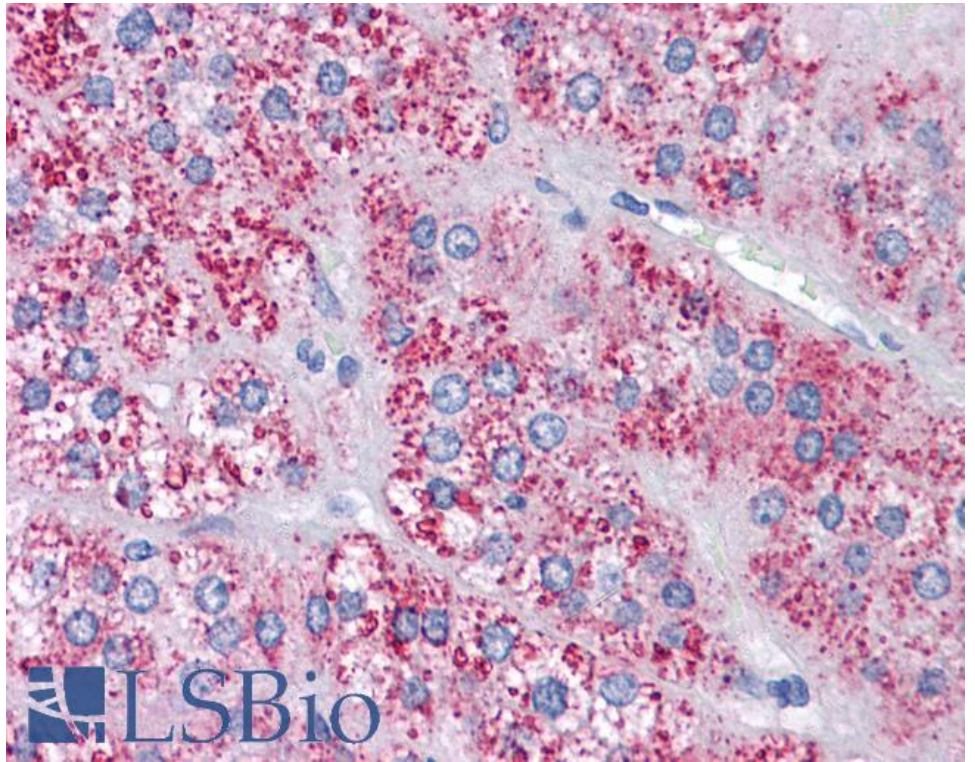
Expected from sequence similarity: Human



EB05163 staining (0.03 μ g/ml) of Human Placenta lysate (RIPA buffer, 35 μ g total protein per lane). Primary incubated for 1 hour. Detected by chemiluminescence.



EB05163 (3.75 μ g/ml) staining of paraffin embedded Human Testis. Steamed antigen retrieval with citrate buffer pH 6, AP-staining.



EB05163 (3.75µg/ml) staining of paraffin embedded Human Adrenal Gland. Steamed antigen retrieval with citrate buffer pH 6, AP-staining.