



UK Office

Everest Biotech Ltd

Cherwell Innovation Centre
77 Heyford Park
Upper Heyford
Oxfordshire
OX25 5HD
UK

Enquiries:

info@everestbiotech.com

Sales:

sales@everestbiotech.com

Tech support:

support@everestbiotech.com

Tel: +44 (0)1869 238326

www.everestbiotech.com

**Research Use Only. Not for
diagnostic or therapeutic use.**

EB11165 - Goat Anti-MTHFR (aa369-383) Antibody

Size: 100µg specific antibody in 200µl



Target Protein

Principal Names: 5,10-methylenetetrahydrofolate reductase (NADPH), methylenetetrahydrofolate reductase, methylenetetrahydrofolate reductase (NAD(P)H), OTTHUMP00000002367, OTTHUMP00000002373, MTHFR

Official Symbol: MTHFR

Accession Number(s): NP_005948.3

Human GeneID(s): [4524](#)

Non-Human GeneID(s): 17769 (mouse), 362657 (rat)

Immunogen

Peptide with sequence C-SRPKSYIYRTQEWDE, from the internal region of the protein sequence according to NP_005948.3.

Please note the [peptide](#) is available for sale.

Purification and Storage

Purified from goat serum by ammonium sulphate precipitation followed by antigen affinity chromatography using the immunizing peptide.

Supplied at 0.5 mg/ml in Tris saline, 0.02% sodium azide, pH7.3 with 0.5% bovine serum albumin.

Aliquot and store at -20°C. Minimize freezing and thawing.

Applications Tested

Peptide ELISA: antibody detection limit dilution 1:8000.

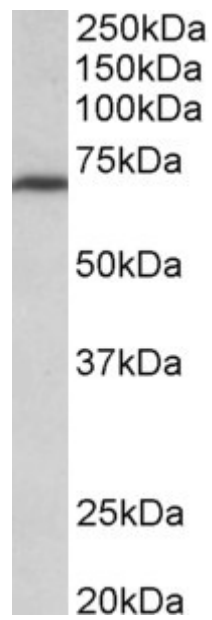
Western blot: Approx 70kDa band observed in lysates of cell line NIH3T3 (calculated MW of 74.6kDa according to Human NP_005948.3 and Mouse NP_034970.2).

Recommended concentration: 0.3-1µg/ml.

Species Reactivity

Tested: Mouse

Expected from sequence similarity: Human, Mouse, Rat, Dog, Pig, Cow



EB11165 (0.3 μ g/ml) staining of NIH3T3 lysate (35 μ g protein in RIPA buffer). Primary incubation was 1 hour.
Detected by chemiluminescence.