



## International Office

### Everest Biotech Ltd

Vector Laboratories, Inc.  
6737 Mowry Ave  
Newark, CA 94560  
United States

Customer Service:

[customerservice@vectorlabs.com](mailto:customerservice@vectorlabs.com)

Technical Service:

[technical@vectorlabs.com](mailto:technical@vectorlabs.com)

Tel: +1 (800) 227-6666

[www.everestbiotech.com](http://www.everestbiotech.com)

**Research Use Only. Not for  
diagnostic or therapeutic use.**

## EB07793 - Goat Anti-TORC2 (mouse) Antibody

Size: 100µg specific antibody in 200µl



### Target Protein

**Principal Names:** Crtc2, CREB regulated transcription coactivator 2, 4632407F12Rik, Torc2, transducer of regulated cAMP response element-binding protein (CREB) 2

**Official Symbol:** Crtc2

**Accession Number(s):** NP\_083157.1

**Non-Human GeneID(s):** 74343 (mouse)

### Immunogen

Peptide with sequence QDPHVLNHQNLTHC, from the internal region of the protein sequence according to NP\_083157.1.

Please note the [peptide](#) is available for sale.

### Purification and Storage

Purified from goat serum by ammonium sulphate precipitation followed by antigen affinity chromatography using the immunizing peptide.

Supplied at 0.5 mg/ml in Tris saline, 0.02% sodium azide, pH7.3 with 0.5% bovine serum albumin.

Aliquot and store at -20°C. Minimize freezing and thawing.

### Applications Tested

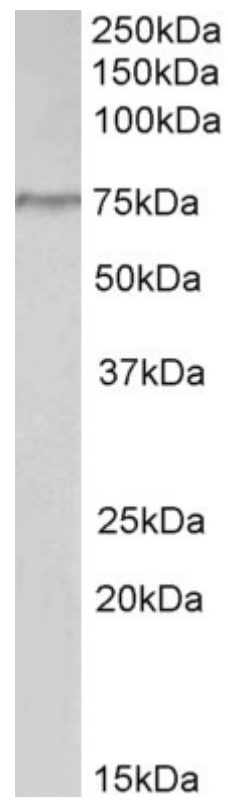
**Peptide ELISA:** antibody detection limit dilution 1:128000.

**Western blot:** Approx 75kDa band observed in lysates of cell line Hela (calculated MW of 73.2kDa according to NP\_083157.1). Recommended concentration: 2-6µg/ml.

### Species Reactivity

**Tested:** Human

**Expected from sequence similarity:** Human, Mouse, Rat, Dog



EB07793 (2 $\mu$ g/ml) staining of Hela lysate (35 $\mu$ g protein in RIPA buffer). Primary incubation was 1 hour. Detected by chemiluminescence.