



## UK Office

### Everest Biotech Ltd

Cherwell Innovation Centre  
77 Heyford Park  
Upper Heyford  
Oxfordshire  
OX25 5HD  
UK

Enquiries:

[info@everestbiotech.com](mailto:info@everestbiotech.com)

Sales:

[sales@everestbiotech.com](mailto:sales@everestbiotech.com)

Tech support:

[support@everestbiotech.com](mailto:support@everestbiotech.com)

Tel: +44 (0)1869 238326

Fax: +44 (0)1869 238327

## US Office

### Everest Biotech c/o Abcore

405 Maple Street, Suite A106  
Ramona,  
CA 92065  
USA

Inquiries:

[info@everestbiotech.com](mailto:info@everestbiotech.com)

Sales:

[usasales@everestbiotech.com](mailto:usasales@everestbiotech.com)

Tech support:

[support@everestbiotech.com](mailto:support@everestbiotech.com)

Tel: 888-320-4628 (toll-free)

Fax: 888-841-9041

[www.everestbiotech.com](http://www.everestbiotech.com)

**Research Use Only. Not for  
diagnostic or therapeutic use.**

## EB05055 - Goat Anti-MTR Antibody

Size: 100µg specific antibody in 200µl



### Target Protein

**Principal Names:** MTR, 5-methyltetrahydrofolate-homocysteine methyltransferase, 5-methyltetrahydrofolate-homocysteine methyltransferase 1, FLJ33168, FLJ43216, FLJ45386, MS, cblG, cobalamin-dependent methionine synthase, methionine synthase, vitamin-B12 dependent methionine synthase

**Official Symbol:** MTR

**Accession Number(s):** NP\_000245.2[ NP\_001278868.1; NP\_001278869.1

**Human GeneID(s):** [4548](#)

**Non-Human GeneID(s):** 81522 (rat)

### Immunogen

Peptide with sequence C-VEKWLGPILGYDTD, from the C Terminus of the protein sequence according to NP\_000245.2[ NP\_001278868.1; NP\_001278869.1.

Please note the [peptide](#) is available for sale.

### Purification and Storage

Purified from goat serum by ammonium sulphate precipitation followed by antigen affinity chromatography using the immunizing peptide.

Supplied at 0.5 mg/ml in Tris saline, 0.02% sodium azide, pH7.3 with 0.5% bovine serum albumin.

Aliquot and store at -20°C. Minimize freezing and thawing.

### Applications Tested

**Peptide ELISA:** antibody detection limit dilution 1:32000.

**IHC:** In paraffin embedded Human Adrenal Gland shows cytoplasm staining in the cortex.

Recommended concentration: 3-5µg/ml.

### Species Reactivity

**Tested:** Human

**Expected from sequence similarity:** Human, Mouse, Rat, Dog, Pig, Cow

### Specific Reference

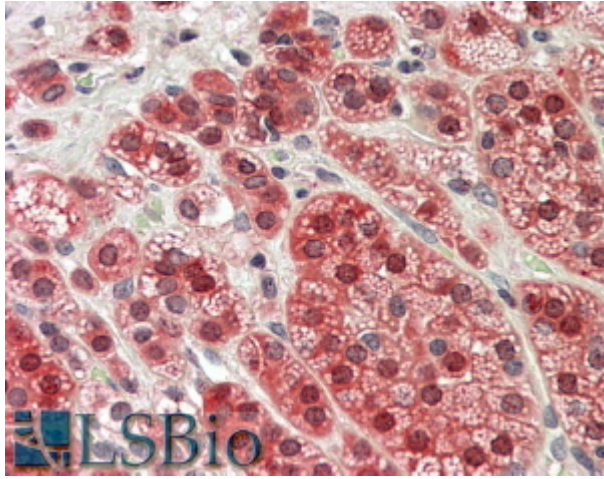
**This antibody (previous batch) has been successfully used in Western blot on Rat:**

Yeo Jin Choi, Jong Deok Na, Doo Sung Jun, Young Chul Kim.

Protective effect of betaine against galactosamine-induced acute liver injury in rats

Journal of Functional Foods 44 (2018) 65-73.

PMID: 0



EB05055 (3.8µg/ml) staining of paraffin embedded Human Adrenal Gland. Steamed antigen retrieval with citrate buffer pH 6, AP-staining.