



## UK Office

### Everest Biotech Ltd

Cherwell Innovation Centre  
77 Heyford Park  
Upper Heyford  
Oxfordshire  
OX25 5HD  
UK

Enquiries:

[info@everestbiotech.com](mailto:info@everestbiotech.com)

Sales:

[sales@everestbiotech.com](mailto:sales@everestbiotech.com)

Tech support:

[support@everestbiotech.com](mailto:support@everestbiotech.com)

Tel: +44 (0)1869 238326

Fax: +44 (0)1869 238327

## US Office

### Everest Biotech c/o Abcore

405 Maple Street, Suite A106  
Ramona,  
CA 92065  
USA

Inquiries:

[info@everestbiotech.com](mailto:info@everestbiotech.com)

Sales:

[usasales@everestbiotech.com](mailto:usasales@everestbiotech.com)

Tech support:

[support@everestbiotech.com](mailto:support@everestbiotech.com)

Tel: 888-320-4628 (toll-free)

Fax: 888-841-9041

[www.everestbiotech.com](http://www.everestbiotech.com)

**Research Use Only. Not for  
diagnostic or therapeutic use.**

## EB07336 - Goat Anti-Munc13-4 / UNC13D (Internal) Antibody

Size: 100µg specific antibody in 200µl



### Target Protein

**Principal Names:** UNC13D, Munc13-4, unc-13 homolog D (C. elegans), FHL3, HLH3, HPLH3, unc-13 homolog D

**Official Symbol:** UNC13D

**Accession Number(s):** NP\_954712.1

**Human GeneID(s):** [201294](#)

**Non-Human GeneID(s):** 70450 (mouse), 192177 (rat)

### Immunogen

Peptide with sequence C-ETQKHKKDLHPLFD, from the internal region of the protein sequence according to NP\_954712.1.

Please note the [peptide](#) is available for sale.

### Purification and Storage

Purified from goat serum by ammonium sulphate precipitation followed by antigen affinity chromatography using the immunizing peptide.

Supplied at 0.5 mg/ml in Tris saline, 0.02% sodium azide, pH7.3 with 0.5% bovine serum albumin.

Aliquot and store at -20°C. Minimize freezing and thawing.

### Applications Tested

**Peptide ELISA:** antibody detection limit dilution 1:128000.

**Western blot:** Approx. 105kDa band observed in Human T-lymphocyte and HeLa lysates (calculated MW of 123kDa according to NP\_954712.1). Recommended concentration: 1-3µg/ml. Primary incubation was 1 hour.

**IHC:** In paraffin embedded Human Thymus shows cytoplasm staining in select areas. Recommended concentration: 2.5µg/ml. In paraffin embedded Mouse Lung shows staining of the respiratory epithelium in wildtype but not in the knock-out. Data kindly provided by Micheal Tuvim, University of Texas MD Anderson Cancer Center, Houston, USA. Recommended concentration: 1-2µg/ml.

### Species Reactivity

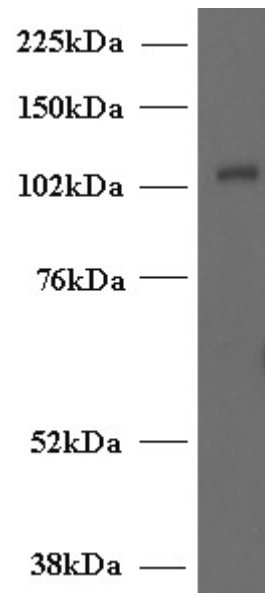
**Tested:** Human, Mouse

**Expected from sequence similarity:** Human, Mouse, Rat, Dog, Pig, Cow

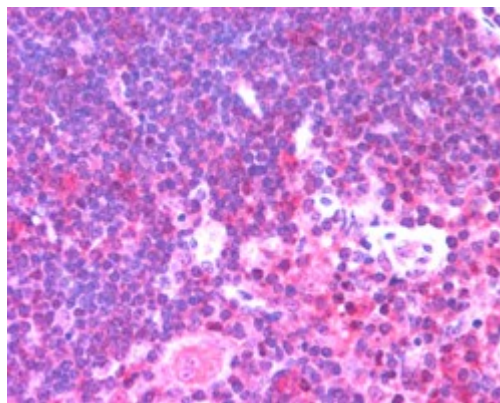
### Specific Reference

**This antibody has been successfully used in Western blot on Human:**

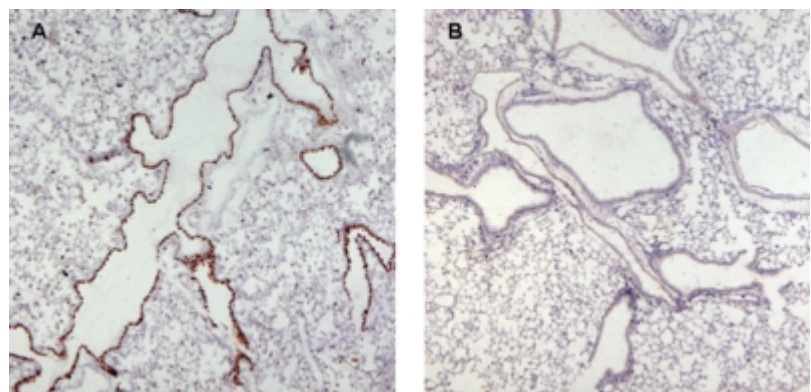
Dettmer V, Bloom K, Gross M, Weissert K, Aichele P, Ehl S, Cathomen T  
Retroviral UNC13D Gene Transfer Restores Cytotoxic Activity of T  
Cells Derived from Familial Hemophagocytic Lymphohistiocytosis Type 3 Patients In Vitro.  
Hum Gene Ther. 2019 Aug;30(8):975-984.  
PMID: 31032638



EB07336 (2 $\mu$ g/ml) staining of Human T-lymphocyte lysate (35 $\mu$ g protein in RIPA buffer). Detected by chemiluminescence.



EB07336 (2.5 $\mu$ g/ml) staining of paraffin embedded Human Thymus. Steamed antigen retrieval with citrate buffer pH 6, AP-staining.



EB07336 (0.5 $\mu$ g/ml) staining of paraffin embedded Mouse Lung (wt in A and KO in B) .