

UK Office

Everest Biotech Ltd

Cherwell Innovation Centre
77 Heyford Park
Upper Heyford
Oxfordshire
OX25 5HD
UK

Enquiries:

info@everestbiotech.com

Sales:

sales@everestbiotech.com

Tech support:

support@everestbiotech.com

Tel: +44 (0)1869 238326

www.everestbiotech.com

**Research Use Only. Not for
diagnostic or therapeutic use.**

EB05882 - Goat Anti-MURF2 / TRIM55 Antibody

Size: 100µg specific antibody in 200µl



Target Protein

Principal Names: TRIM55, RNF29, MURF-2, ring finger protein 29, for muscle specific ring finger 2, tripartite motif-containing 55, muscle specific ring finger 2

Official Symbol: TRIM55

Accession Number(s): NP_908973.1; NP_908974.1; NP_908975.1

Human GeneID(s): [84675](#)

Non-Human GeneID(s): 381485 (mouse), 365751 (rat)

Important Comments: This antibody is expected to recognize isoforms 1, 3 and 4 (NP_908973.1, NP_908974.1 and NP_908975.1 resp.).

Immunogen

Peptide with sequence C-HIFSFSWLNSLNE, from the C Terminus of the protein sequence according to NP_908973.1; NP_908974.1; NP_908975.1.

Please note the [peptide](#) is available for sale.

Purification and Storage

Purified from goat serum by ammonium sulphate precipitation followed by antigen affinity chromatography using the immunizing peptide.

Supplied at 0.5 mg/ml in Tris saline, 0.02% sodium azide, pH7.3 with 0.5% bovine serum albumin.

Aliquot and store at -20°C. Minimize freezing and thawing.

Applications Tested

Peptide ELISA: antibody detection limit dilution 1:16000.

Western blot: Approx 58kDa band observed in lysates of cell line HeLa (calculated MW of 60.5kDa according to NP_908973.1). Recommended concentration: 1-3µg/ml. Primary incubation 1 hour at room temperature

IHC: Paraffin embedded Human Heart. Recommended concentration: 10µg/ml.

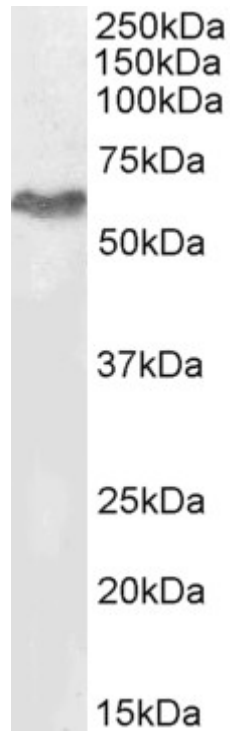
Immunofluorescence: Strong expression of the protein seen in the Golgi and cytoplasm of U2OS cells. Recommended concentration: 10µg/ml.

Flow Cytometry: Flow cytometric analysis of HeLa cells. Recommended concentration: 10µg/ml.

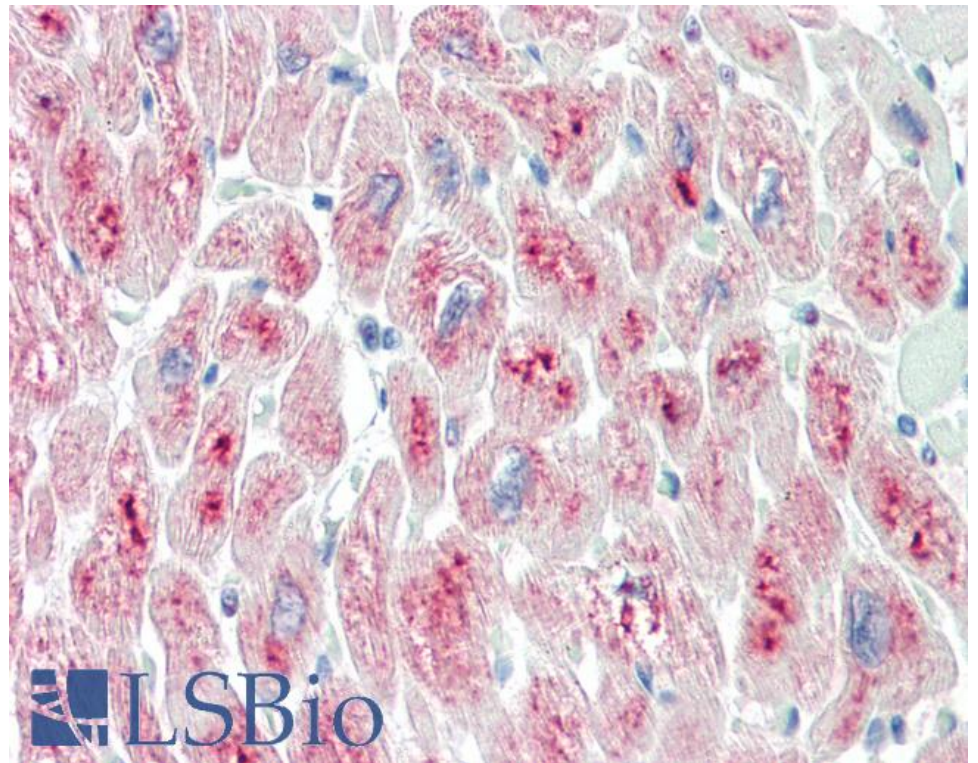
Species Reactivity

Tested: Human

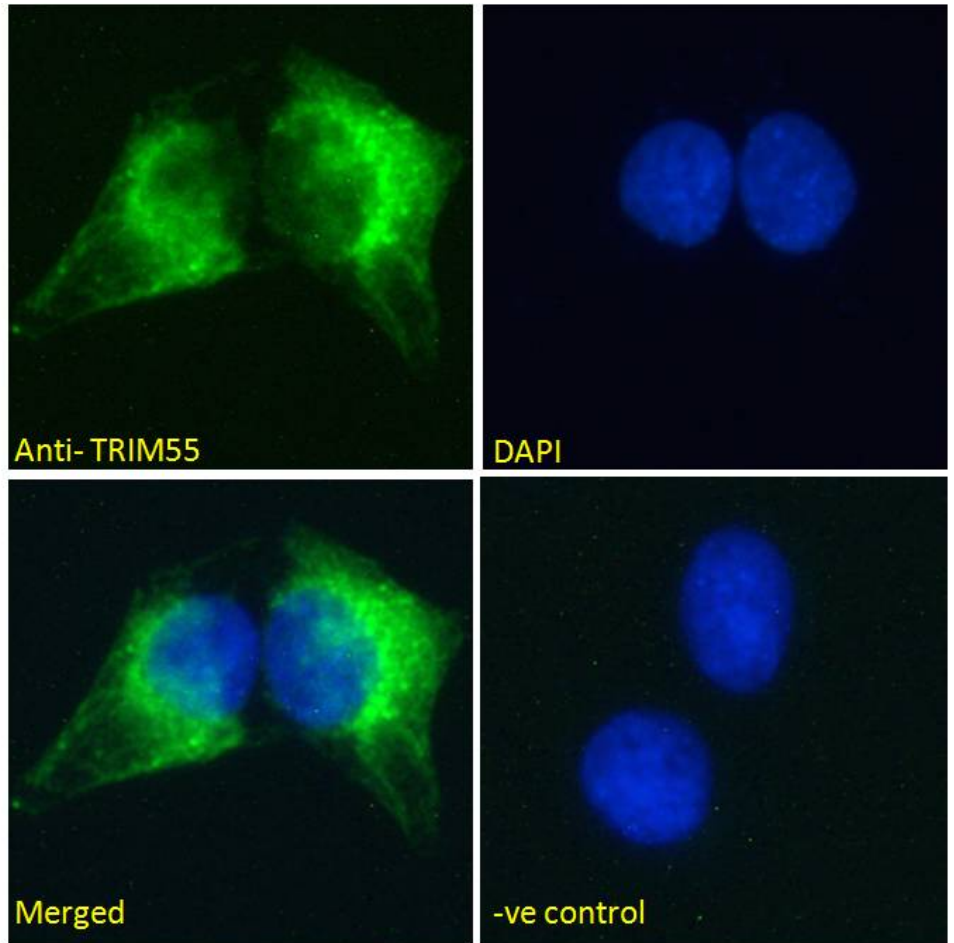
Expected from sequence similarity: Human, Mouse, Rat, Dog, Pig



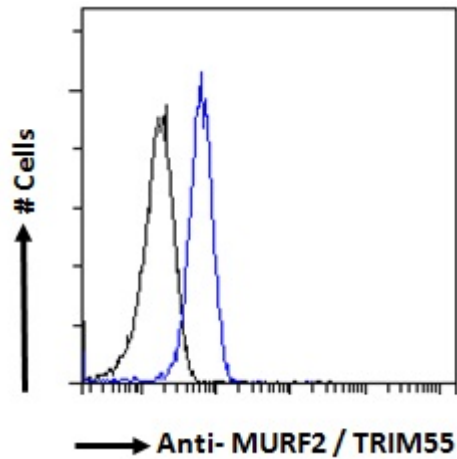
EB05882 (2 μ g/ml) staining of HeLa cell lysate (35 μ g protein in RIPA buffer). Detected by chemiluminescence.



EB05882 (10 μ g/ml) staining of paraffin embedded Human Heart. Steamed antigen retrieval with citrate buffer pH 6, AP-staining.



EB05882 Immunofluorescence analysis of paraformaldehyde fixed U2OS cells, permeabilized with 0.15% Triton. Primary incubation 1hr (10ug/ml) followed by Alexa Fluor 488 secondary antibody (2ug/ml), showing Golgi and cytoplasmic staining. The nuclear stain is DAPI (blue). Negative control: Unimmunized goat IgG (10ug/ml) followed by Alexa Fluor 488 secondary antibody (2ug/ml).



EB05882 Flow cytometric analysis of paraformaldehyde fixed HeLa cells (blue line), permeabilized with 0.5% Triton. Primary incubation 1hr (10ug/ml) followed by Alexa Fluor 488 secondary antibody (1ug/ml). IgG control: Unimmunized goat IgG (black line) followed by Alexa Fluor 488 secondary antibody.