

## UK Office

### Everest Biotech Ltd

Cherwell Innovation Centre  
77 Heyford Park  
Upper Heyford  
Oxfordshire  
OX25 5HD  
UK

Enquiries:

[info@everestbiotech.com](mailto:info@everestbiotech.com)

Sales:

[sales@everestbiotech.com](mailto:sales@everestbiotech.com)

Tech support:

[support@everestbiotech.com](mailto:support@everestbiotech.com)

Tel: +44 (0)1869 238326

[www.everestbiotech.com](http://www.everestbiotech.com)

**Research Use Only. Not for  
diagnostic or therapeutic use.**

## EB05883 - Goat Anti-MURF3 / TRIM54 Antibody

Size: 100µg specific antibody in 200µl



### Target Protein

**Principal Names:** TRIM54, MURF-3, tripartite motif-containing 54, RNF30, MURF, ring finger protein 30, muscle-specific RING-finger protein 3, muscle-specific RING-finger protein homolog, OTTHUMP00000122598

**Official Symbol:** TRIM54

**Accession Number(s):** NP\_115935.3; NP\_912730.2

**Human GeneID(s):** [57159](#)

### Immunogen

Peptide with sequence C-GSAGPEEERPDGP, from the C Terminus of the protein sequence according to NP\_115935.3; NP\_912730.2.

Please note the [peptide](#) is available for sale.

### Purification and Storage

Purified from goat serum by ammonium sulphate precipitation followed by antigen affinity chromatography using the immunizing peptide.

Supplied at 0.5 mg/ml in Tris saline, 0.02% sodium azide, pH7.3 with 0.5% bovine serum albumin.

Aliquot and store at -20°C. Minimize freezing and thawing.

### Applications Tested

**Peptide ELISA:** antibody detection limit dilution 1:8000.

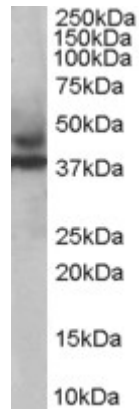
**Western blot:** Experiments gave bands at approx 45kDa and 38kDa in Human Skeletal Muscle lysate after 1µg/ml antibody staining. These bands correspond to the reported isoforms with calculated MWs of 43.1kDa according to NP\_115935, and 38.6kDa according to NP\_912730. Recommended concentration: 1-3µg/ml.

**IHC:** Paraffin embedded Human Skeletal Muscle. Recommended concentration: 3.75µg/ml.

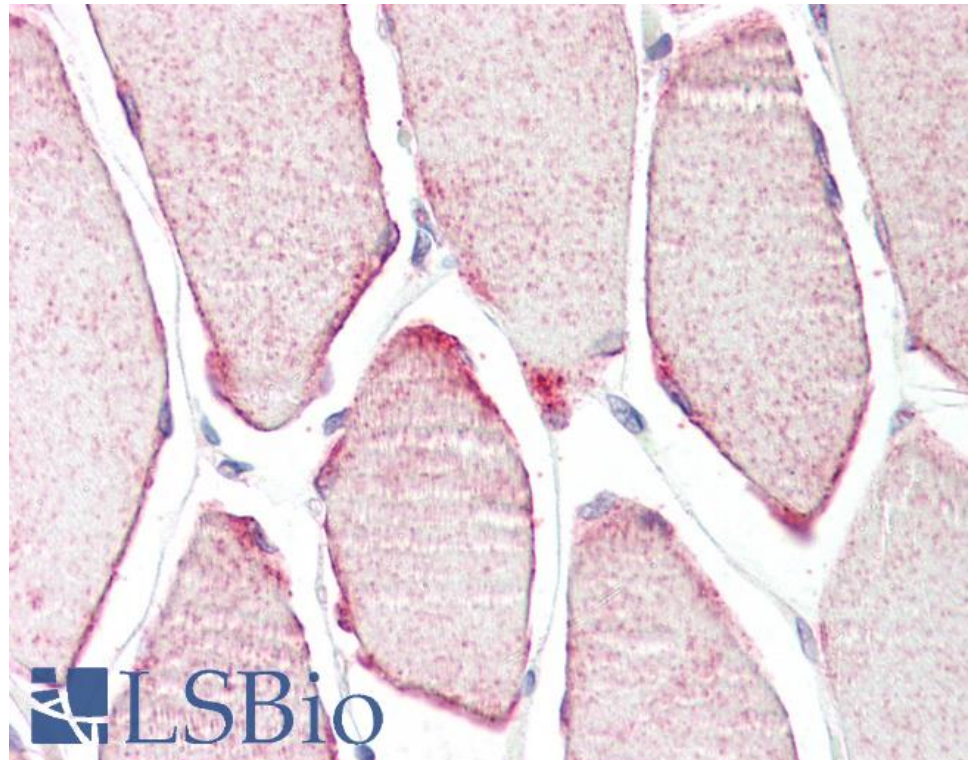
### Species Reactivity

**Tested:** Human

**Expected from sequence similarity:** Human



EB05883 staining (1ug/ml) of Human Skeletal Muscle lysate (RIPA buffer, 35ug total protein per lane). Primary incubated for 1 hour. Detected by chemiluminescence.



EB05883 (3.75µg/ml) staining of paraffin embedded Human Skeletal Muscle. Steamed antigen retrieval with citrate buffer pH 6, AP-staining.